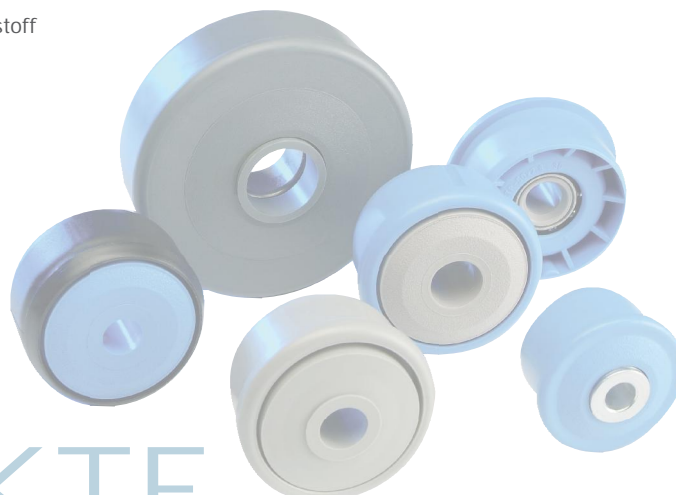


KTR-30			
Typ	Di +0,2	Da	Tragzahl C [daN]
KTR-50x1,5.30	47,3	49,9	80
KTR-50x2,8.30	44,6	49,9	80
KTR-60x1,5.30	57,3	59,9	80

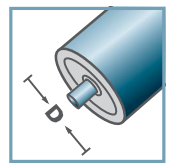
Weitere Varianten auf Anfrage!

- ☛ Radkörper: Kunststoff
- ☛ Einfachlabyrinth: Kunststoff
- ☛ Kugellager RL-30
 - ☛ Lagerschale: Stahl, gehärtet
 - ☛ Innenring: Stahl, gehärtet
 - ☛ Kugelkäfig: Kunststoff
 - ☛ Kugel: Stahl

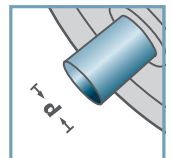
Achtung: bei Achse 15 mm ist das Einfachlabyrinth lose beigelegt und muss bei der Montage gesichert werden!



KTR-30



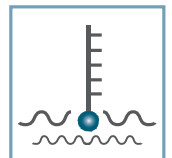
D [mm]
50 - 60



d [mm]
10; 12; 15; SW11



C [daN]
80



T [°C]
0° - 80°

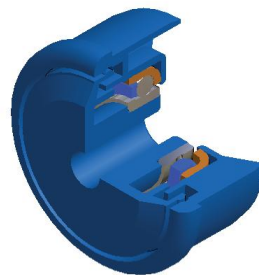
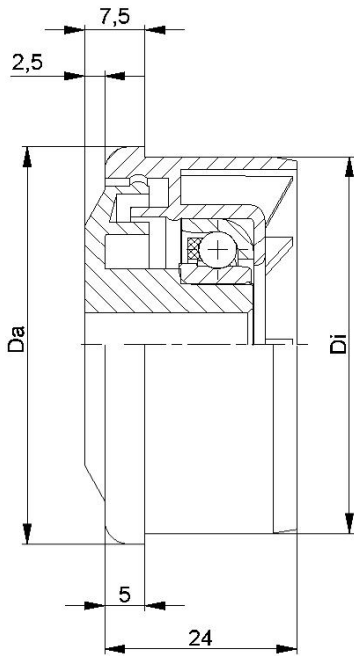


Öl



Karton [Stck.]
ø50: 250
ø60: 200

KTR/KTE

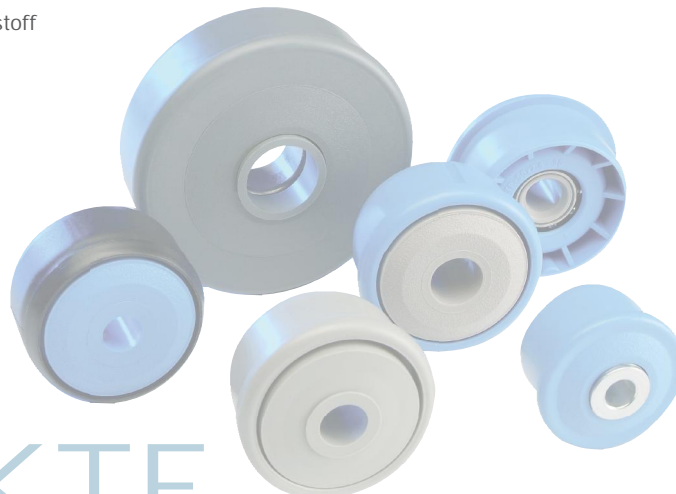


KTR-31			
Typ	Di +0,2	Da	Tragzahl C [daN]
KTR-50x1,5.31	47,3	49,9	25
KTR-50x2,8.31	44,6	49,9	25
KTR-60x1,5.31	57,3	59,9	25

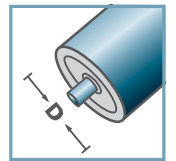
Weitere Varianten auf Anfrage!

- ☛ Radkörper: Kunststoff
- ☛ Einfachlabyrinth: Kunststoff
- ☛ Kugellager RL-31
 - ☛ Lagerschale: 1.4301
 - ☛ Innenring: 1.4305
 - ☛ Kugelkäfig: Kunststoff
 - ☛ Kugel: 1.4301

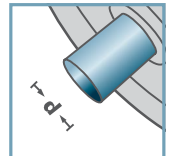
Achtung: bei Achse 15 mm ist das Einfachlabyrinth lose beigelegt und muss bei der Montage gesichert werden!



KTR-31



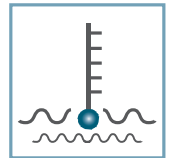
D [mm]
50 - 60



d [mm]
10; 12; 15; SW11



C [daN]
25



T [°C]
0° - 80°

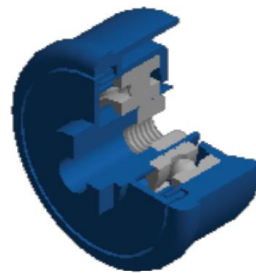
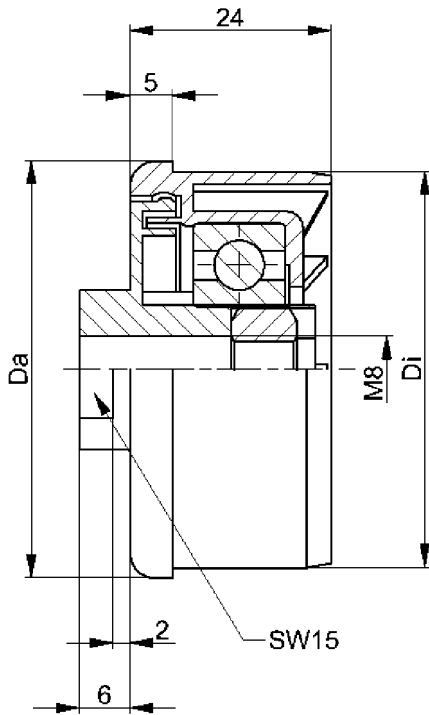


Öl



Karton [Stck.]
ø50: 250
ø60: 200

KTR/KTE

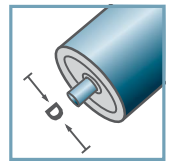


KTR-40.M8			
Typ	Di +0,2	Da	Tragzahl C [daN]
KTR-50x1,5.40	47,3	49,9	80

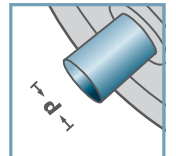
Weitere Varianten auf Anfrage!

- Radkörper: Kunststoff
- Einfachlabyrinth: Kunststoff
- Kugellager 6202
- Sechskantmutter

KTR-40.M8



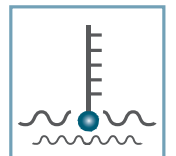
D [mm]
50



d [mm]
M8



C [daN]
80



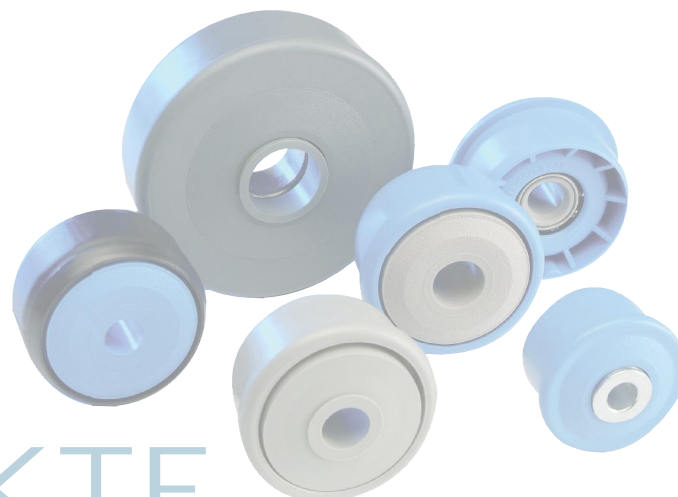
T [°C]
0° - 80°



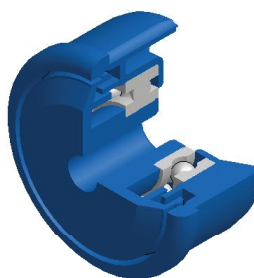
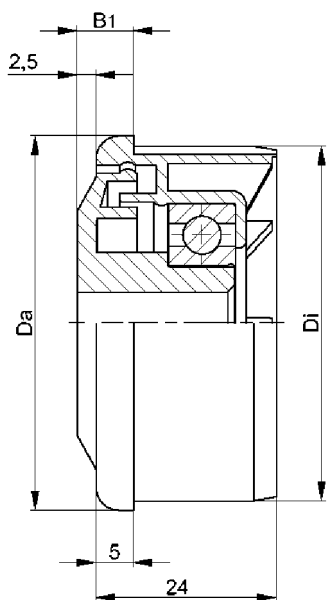
EP 2



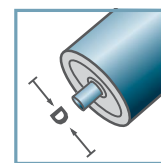
Karton [Stck.]
ø50: 250



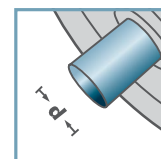
KTR/KTE



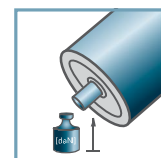
KTR-42



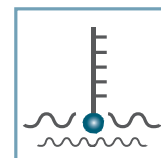
D [mm]
40 - 60



d [mm]
10; 12; 15; SW11



C [daN]
80; 120



T [°C]
0° - 80°



EP 2



Karton [Stck.]

ø40: -
ø50: 250
ø60: 200

KTR-42				
Typ	Di +0,25	Da	B1	Tragzahl C [daN]
KTR-40x1,5.42	37,2	39,9	9,0	120
KTR-50x1,5.42	47,3	49,9	7,5	80
KTR-50x2,0.42	46,3	49,9	7,5	80
KTR-50x2,8.42	44,6	49,9	7,5	80
KTR-60x1,5.42	57,3	59,9	7,5	80
KTR-60x2,0.42	56,3	59,9	7,5	80

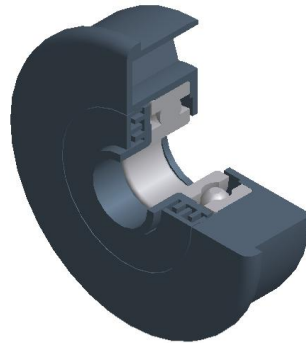
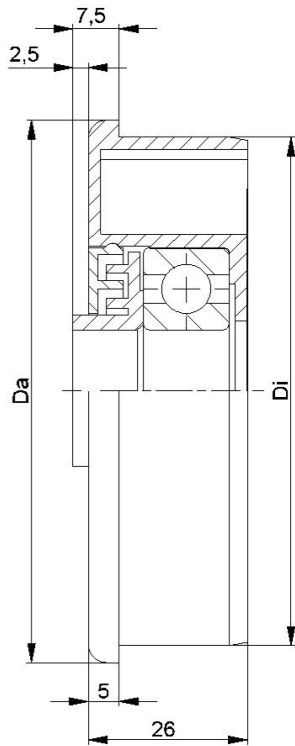
Weitere Varianten auf Anfrage!

- ☛ Radkörper: Kunststoff
- ☛ Einfachlabyrinth: Kunststoff
- ☛ Kugellager 6002

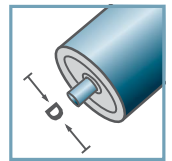
Achtung: bei Achse 15 mm ist das Einfachlabyrinth lose beigelegt und muss bei der Montage gesichert werden!



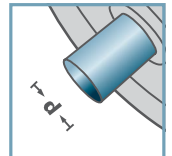
KTR/KTE



KTR-44



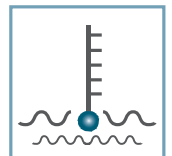
D [mm]
89



d [mm]
20



C [daN]
150



T [°C]
0° - 80°



EP 2



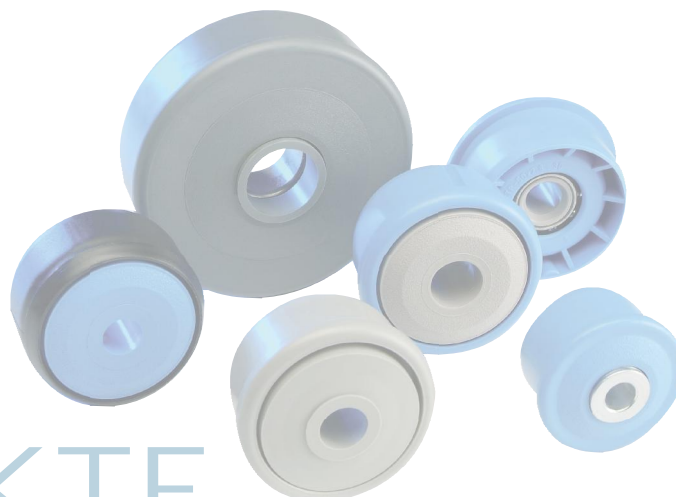
Karton [Stck.]

80

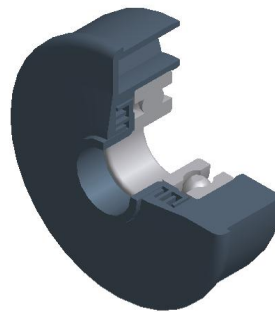
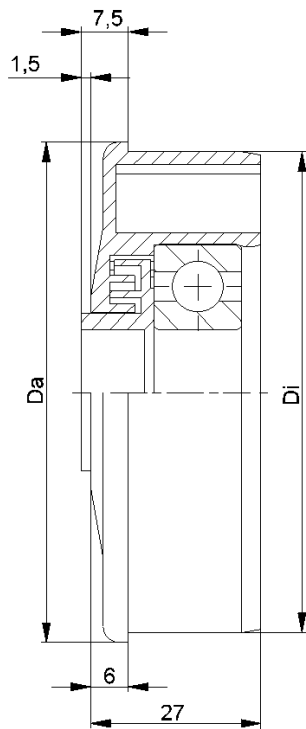
KTR-44			
Typ	Di +0,2	Da	Tragzahl C [daN]
KTR-89x3,0.44	83,3	88,9	150

Weitere Varianten auf Anfrage!

- ☛ Radkörper: Kunststoff
- ☛ Innenlabyrinth: Kunststoff
- ☛ Außenlabyrinth: Kunststoff
- ☛ Kugellager 6204



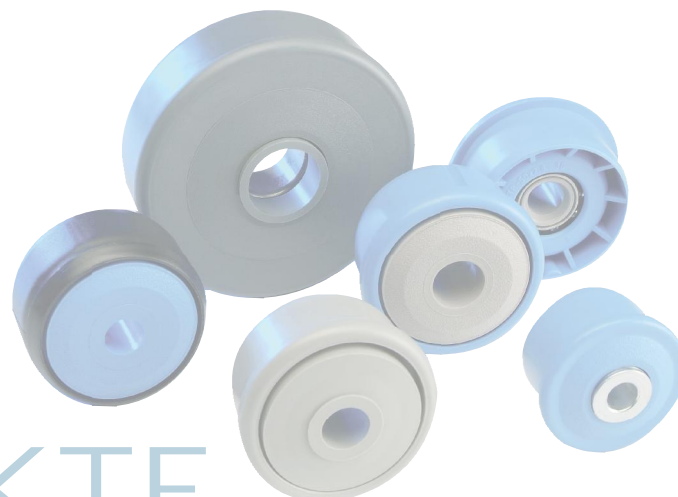
KTR/KTE



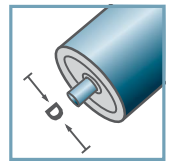
KTR-43/44			
Typ	Di +0,2	Da	Tragzahl C [daN]
KTR-63,5x2,9.43/.44	58,0	63,4	150
KTR-80x2,0.43/.44	76,4	79,9	150

Weitere Varianten auf Anfrage!

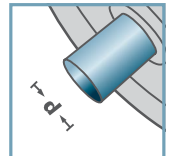
- Radkörper: Kunststoff
- Mehrfachlabyrinth: Kunststoff
- Kugellager 6303/6204



KTR-43/44



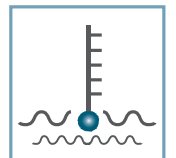
D [mm]
63,5 - 80



d [mm]
6303: 17
6204: 20



C [daN]
150



T [°C]
0° - 80°

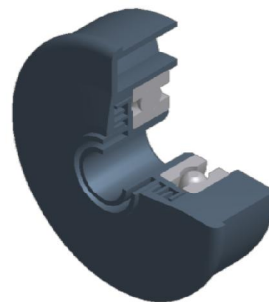
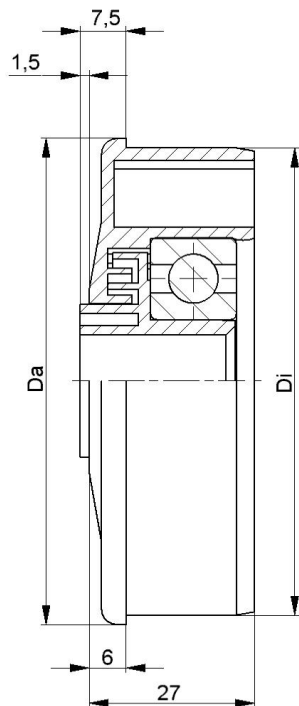


EP 2



Karton [Stck.]
100

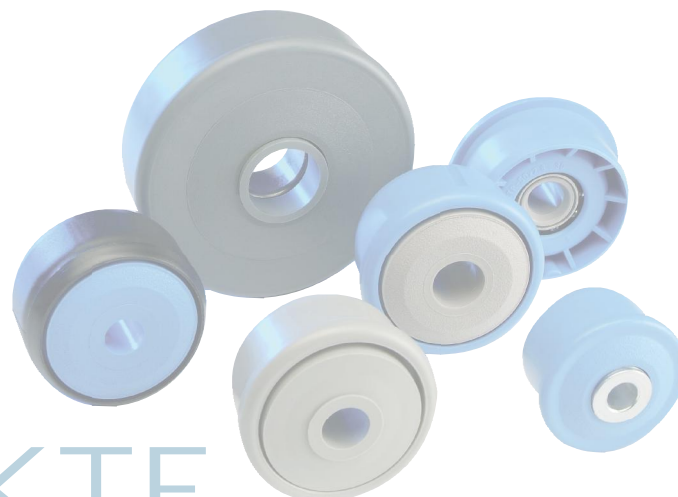
KTR/KTE



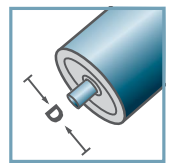
KTR-43/44			
Typ	Di +0,2	Da	Tragzahl C [daN]
KTR-63,5x2,9.43/.44	58,0	63,4	150
KTR-80x2,0.43/.44	76,4	79,9	150

Weitere Varianten auf Anfrage!

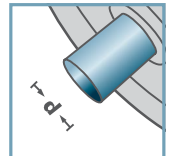
- Radkörper: Kunststoff
- Mehrfachlabyrinth: Kunststoff
- Kugellager 6303/6204



KTR-43/44



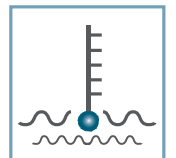
D [mm]
63,5 - 80



d [mm]
6303: 12
6204: 15



C [daN]
150



T [°C]
0° - 80°

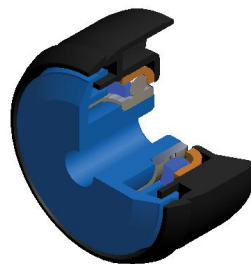
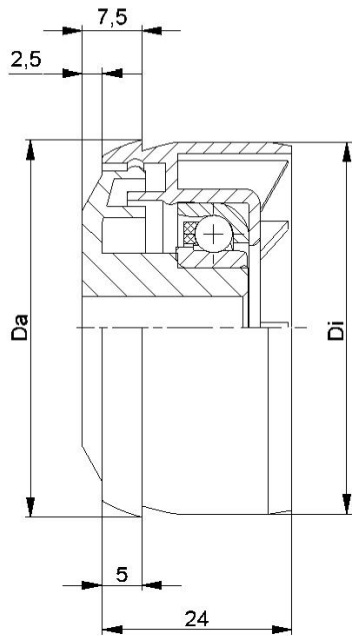


EP 2



Karton [Stck.]
100

KTR/KTE

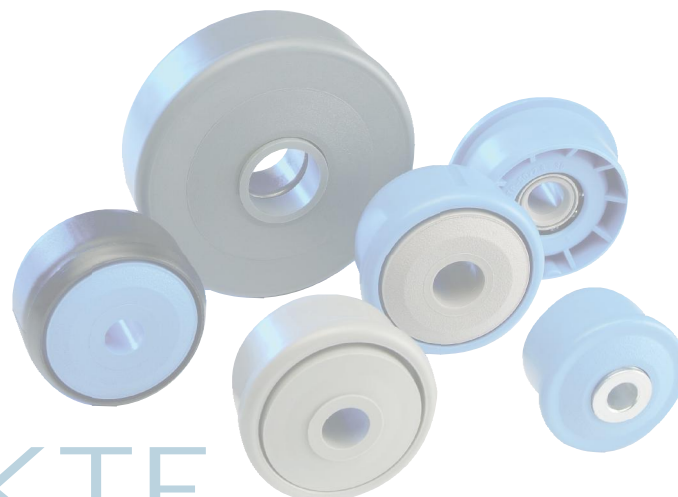


KTE-30			
Typ	Di +0,3	Da	Tragzahl C [daN]
KTE-50x1,5.30	47,1	47,9	80

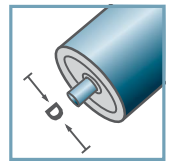
Weitere Varianten auf Anfrage!

- ☛ Radkörper: Kunststoff
- ☛ Einfachlabyrinth: Kunststoff
- ☛ Kugellager RL-30
 - ☛ Lagerschale: Stahl, gehärtet
 - ☛ Innenring: Stahl, gehärtet
 - ☛ Kugelkäfig: Kunststoff
 - ☛ Kugel: Stahl

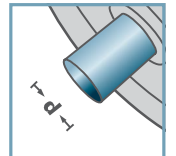
Achtung: bei Achse 15 mm ist das Einfachlabyrinth lose beigelegt und muss bei der Montage gesichert werden!



KTE-30



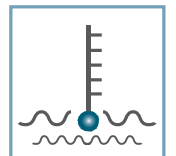
D [mm]
50



d [mm]
10; 12; 15; SW11



C [daN]
80



T [°C]
0° - 80°



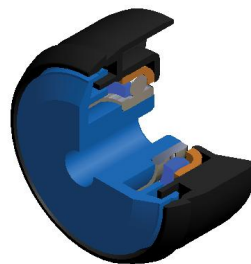
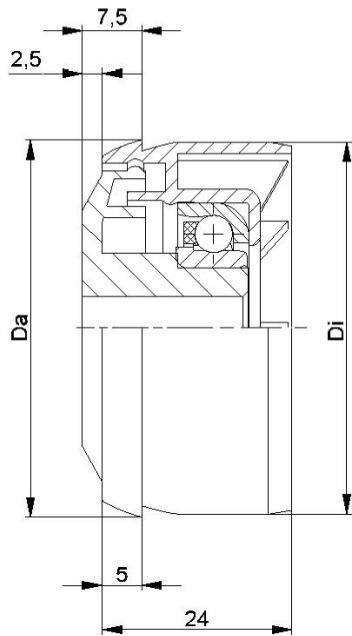
Öl



Karton [Stck.]

250

KTR/KTE

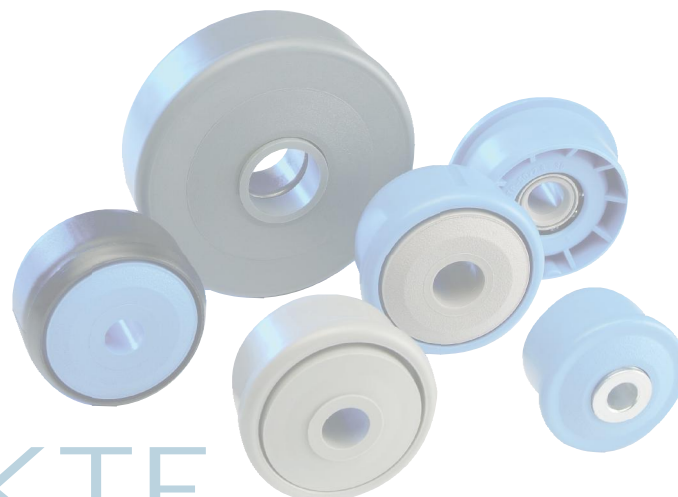


KTE-31			
Typ	Di +0,3	Da	Tragzahl C [daN]
KTE-50x1,5.31	47,1	47,9	25

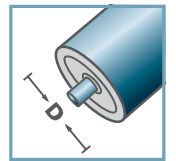
Weitere Varianten auf Anfrage!

- ☛ Radkörper: Kunststoff
- ☛ Einfachlabyrinth: Kunststoff
- ☛ Kugellager RL-31
 - ☛ Lagerschale: 1.4301
 - ☛ Innenring: 1.4305
 - ☛ Kugelkäfig: Kunststoff
 - ☛ Kugel: 1.4301

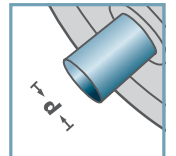
Achtung: bei Achse 15 mm ist das Einfachlabyrinth lose beigelegt und muss bei der Montage gesichert werden!



KTE-31



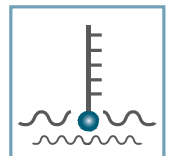
D [mm]
50



d [mm]
10; 12; 15; SW11



C [daN]
25



T [°C]
0° - 80°

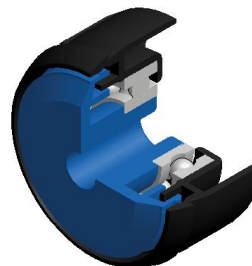
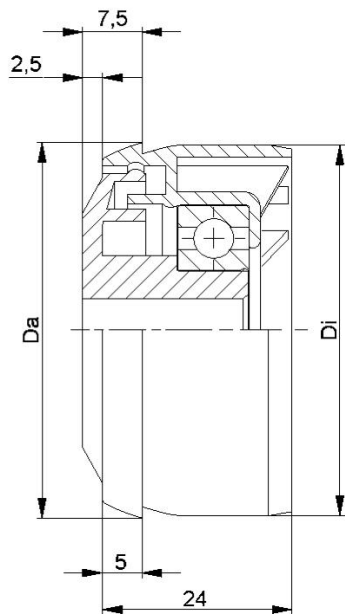


Öl



Karton [Stck.]
250

KTR/KTE

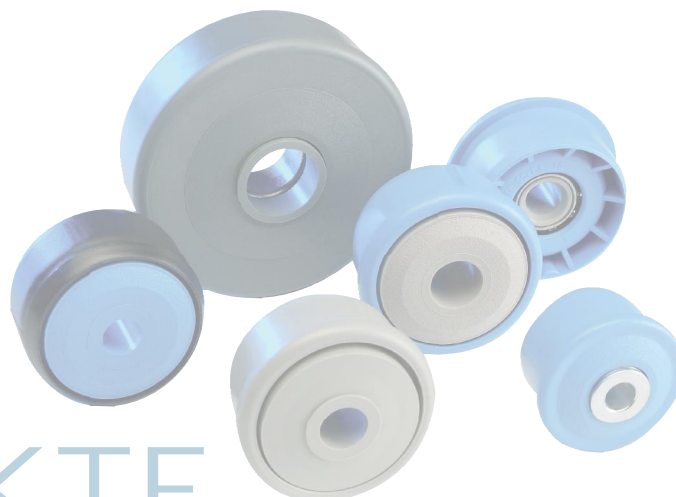


KTE-42			
Typ	Di +0,3	Da	Tragzahl C [daN]
KTE-50x1,5.42	47,1	47,9	80

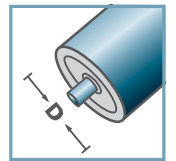
Weitere Varianten auf Anfrage!

- Radkörper: Kunststoff
- Einfachlabyrinth: Kunststoff
- Kugellager 6002

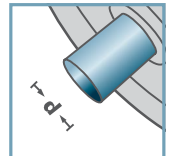
Achtung: bei Achse 15 mm ist das Einfachlabyrinth lose beigelegt und muss bei der Montage gesichert werden!



KTE-42



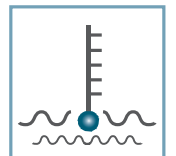
D [mm]
50



d [mm]
10; 12; 15; SW11



C [daN]
80



T [°C]
0° - 80°



EP 2



Karton [Stck.]
250

KTR/KTE