

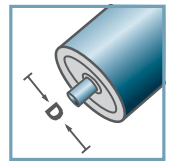
SLR	
Tipo	carga máxima C [daN]
SLR-480	20

Otras medidas a consultar!

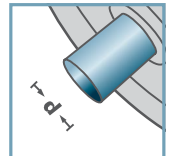
- Carcasa exterior: Acero cincado
- Alojamiento de bolas: Acero templado
- Buje: Acero templado y cincado
- Bolas: Acero



SLR-



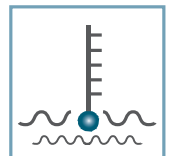
D [mm]
-



d [mm]
6; 8



C [daN]
20



T [°C]
-30° - 140°



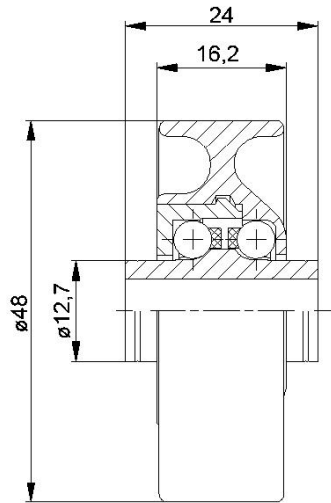
-



Envase [pzs.]

250

KLR/SLR/SR



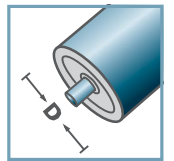
KLR-02/03			
Tipo	Normal	Inox	carga máxima
	.02	.03	C [daN]
KLR-480	x	x	15

Otras medidas a consultar!

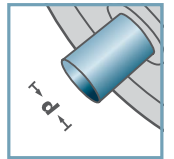
- ☛ Cazoleta: Plástico
- ☛ Buje: Plástico
- ☛ Tapa del cojinete: Plástico
- ☛ Jaula: Plástico
- ☛ Bolas
 - ☛ 02: Acero
 - ☛ 03: INOX 1.4034



KLR-02
KLR-03



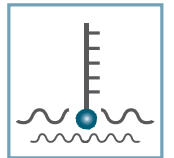
D [mm]
-



d [mm]
6; 8



C [daN]
15



T [°C]
0° - 80°



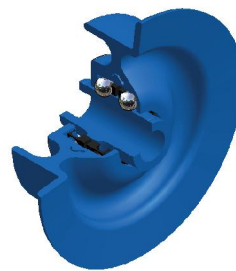
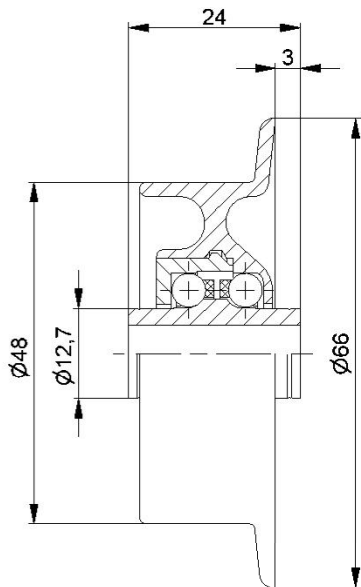
-



Envase [pzs.]

250

KLR/SLR/SR



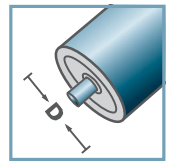
SR-02/03			
Tipo	Normal	Inox	carga máxima C [daN]
SR-480	x	x	10

Otras medidas a consultar!

- ☛ Cazoleta: Plástico
- ☛ Buje: Plástico
- ☛ Tapa del cojinete: Plástico
- ☛ Jaula: Plástico
- ☛ Bolas
 - ☛ 02: Acero
 - ☛ 03: INOX 1.4034

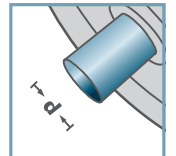


SR-02
SR-03



D [mm]

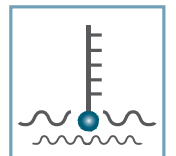
-



d [mm]
6; 8



C [daN]
15



T [°C]
0° - 80°



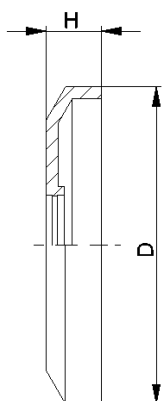
-



Envase [pzs.]

250

KLR/SLR/SR



DK-KLR		
Tipo	D	H
DK-KLR-02	40,5	7

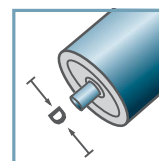
Otras medidas a consultar!

🔧 Tapa obturadora: Plástico



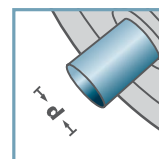
KLR/SLR/SR

DK-KLR-02



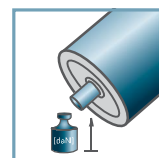
D [mm]

-



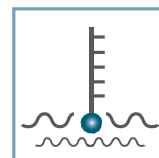
d [mm]

-



C [daN]

-



T [°C]

0° - 80°



-



Envase [pzs.]

