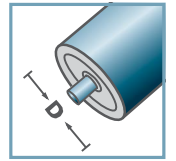


VR-		
Tipo	Di	Da
50x1,5.40	47,3	49,8
Correas de transmisión a consultar		

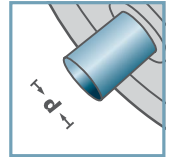
🔩 Piñón: Plástico



VR-40



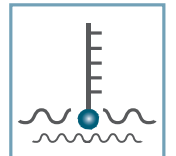
D [mm]  
50



d [mm]  
-



C [daN]  
-



T [°C]  
0° - 80°



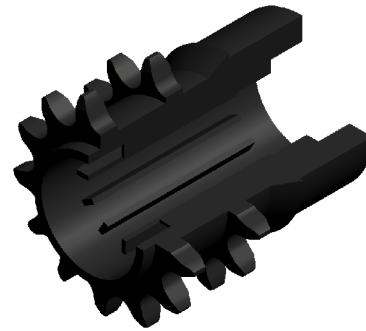
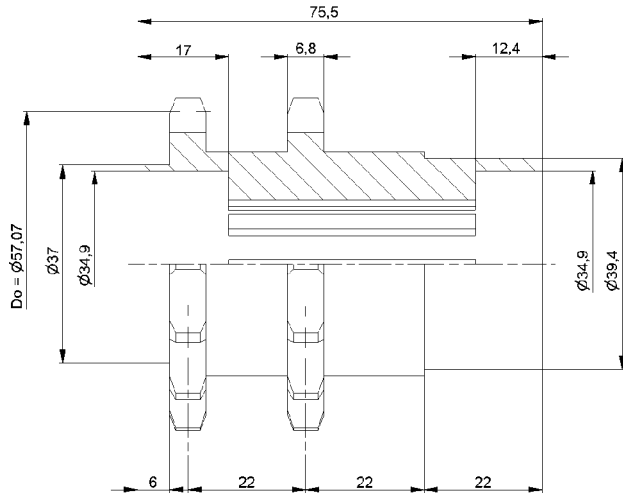
-



Envase [pzs.]

100

# Piñón suelto



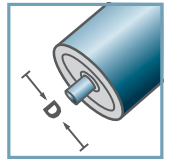
KKR-1/2" x5/16" -Z14

Otras medidas a consultar!

Ⓢ Piñón: Plástico

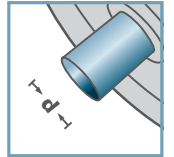


KKR-40



D [mm]

-



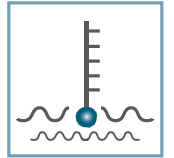
d [mm]

-



C [daN]

-



T [°C]

0° - 80°



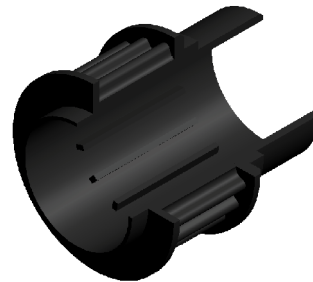
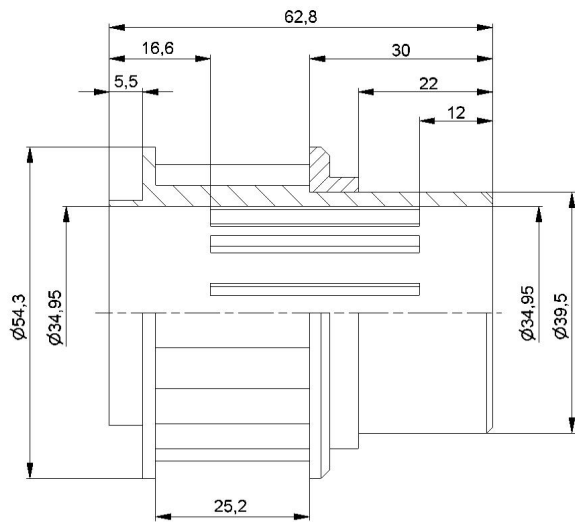
-



Envase [pzs.]

500

# Piñón suelto



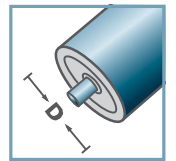
KZA-Z20.40

Otras medidas a consultar!

☞ Polea: Plástico

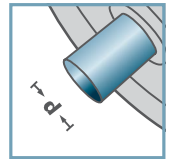


KZA-40



D [mm]

-



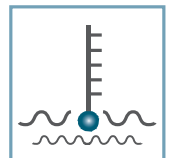
d [mm]

-



C [daN]

-



T [°C]

0° - 80°



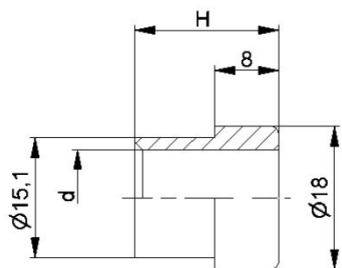
-



Envase [pzs.]

140

# Polea dentada



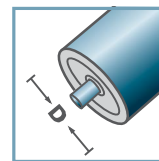
KKR-40		
	d	H
KKR-40	10	19
KKR-40	12	18
KKR-40	14	19
KKR-40	SW11	19

Otras medidas a consultar!

 Casquillo reductor:: Plástico

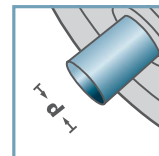


KKR-40



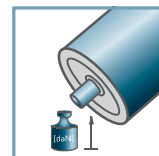
D [mm]

-



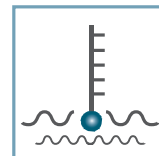
d [mm]

10; 12; 14; SW11



C [daN]

-



T [°C]

0° - 80°



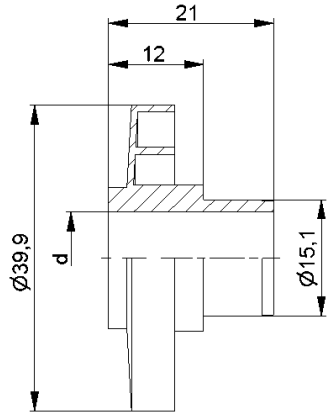
-



Envase [pzs.]

500/8000

# Reductor (Accesorios)

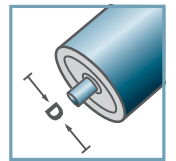


KKR-40	
Typ	d
KKR-40	10
KKR-40	12
KKR-40	14
KKR-40	SW11
<b>Otras medidas a consultar!</b>	

☛ Tapa-laberinto: Plástico

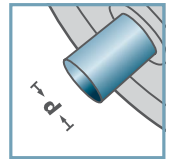


KKR-40



D [mm]

-



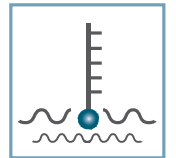
d [mm]

10; 12; 14; SW11



C [daN]

-



T [°C]

0° - 80°



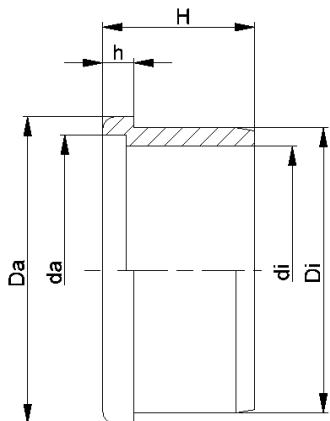
-



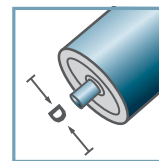
Envase [pzs.]

200/1000

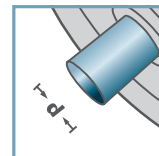
# Tapa frontal (Accesorios)



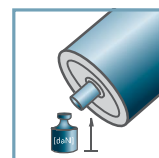
KKR-40



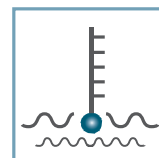
D [mm]  
50 - 60



d [mm]  
-



C [daN]  
-



T [°C]  
0° - 80°



-



Envase [pzs.]

ø50: 400  
ø60: 250

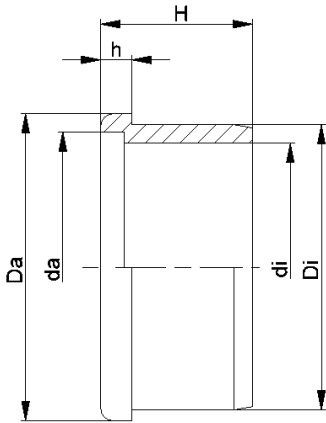
KKR-40						
Typ	Di	Da	di	da	H	h
50x1,5	47,25	50	39,3	42,6	25,2	5
50x2,8	44,7	50	39,3	42,6	25,2	5
60x1,5	57,3	60	47,0	50,7	25,5	5
60x2,0	56,3	60	47,0	50,7	25,5	5

Otras medidas a consultar!

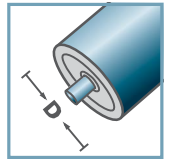
☛ Aro distanciador (fijo): Plástico



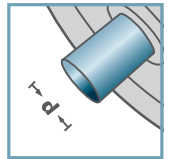
# Aro adaptador (Accesorios)



KKR-40



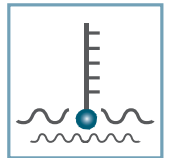
D [mm]  
50 - 60



d [mm]  
-



C [daN]  
-



T [°C]  
0° - 80°



-



Envase [pzs.]

400

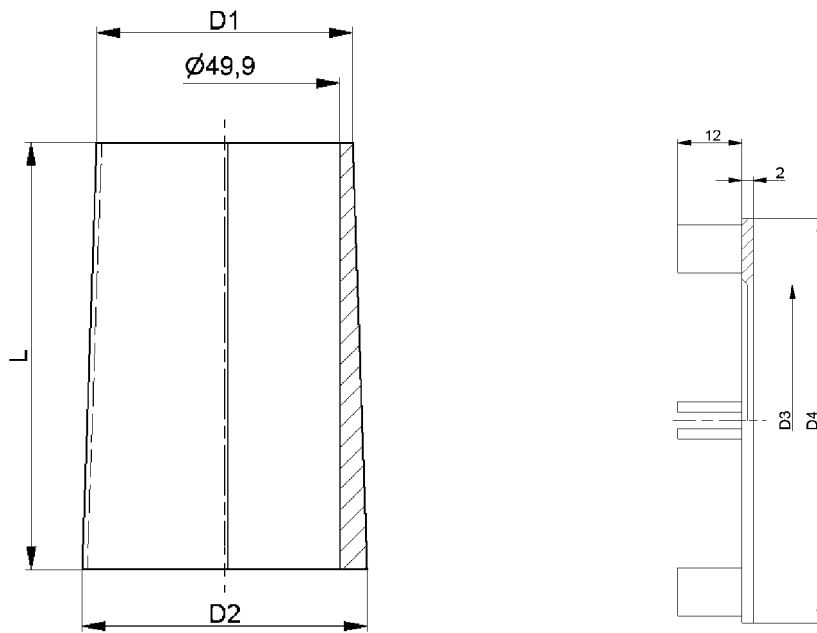
KKR-40						
Typ	Di	Da	di	da	H	h
50x1,5	47,2	50	40,6	44,6	25	5

Otras medidas a consultar!

☛ Aro distanciador (fricción): Plástico



# Aro adaptador (Accesorios)



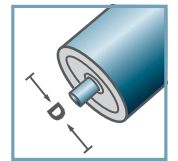
KF-50					
Tipo A	D1	D2	L	D3	D4
KF-50 I-a Type A	53,4	59,7	92,5	-	-
KF-50 I-b Type A	54,0	59,7	95,5	-	-
KF-50 II Type A	60,0	66,5	100,0	-	-
KF-50 III Type A	66,5	73,0	99,0	-	-
KF-50 IV Type A	73,5	80,0	100,0	50,6	75,5
KF-50 V Type A	80,0	86,5	99,5	50,7	81,7
KF-50 VI Type A	86,5	93,5	100,0	50,6	87,7
KF-50 VII Type A	93,5	100,0	100,0	50,6	94,3
KF-50 VIII Type A	100,0	106,5	95,5	-	-
KF-50 IX Type A	106,5	113,0	95,5	-	-
KF-50 X Type A	113,0	119,5	95,5	-	-

Otras medidas a consultar!

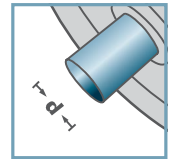
- Cono: Plástico
- Tapa final: Plástico



KF-50



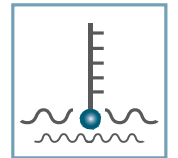
D [mm]  
50



d [mm]  
-



C [daN]  
-



T [°C]  
0° - 80°



-

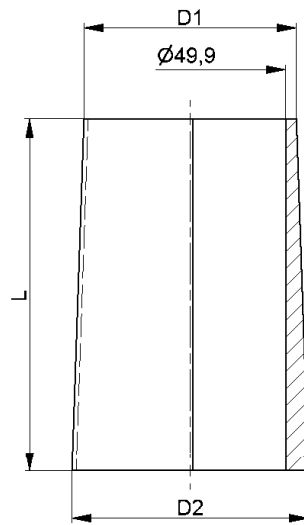


Envase [pzs.]



# Funda Cónica





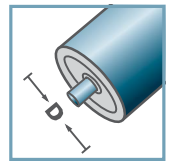
KF-50			
Tipo	D1	D2	L
KF-50 I Type B	54,0	59,9	90,0
KF-50 II Type B	59,9	66,6	100,0
KF-50 III Type B	66,6	73,4	100,0
KF-50 IV Type B	73,4	80,1	100,0
KF-50 V Type B	80,1	86,9	100,0
KF-50 VI Type B	86,9	93,6	100,0
KF-50 VII Type B	93,6	100,4	100,0
KF-50 VIII Type B	100,4	107,1	100,0
KF-50 IX Type B	107,1	113,9	100,0
KF-50 X Type B	113,9	120,9	100,0

Otras medidas a consultar!

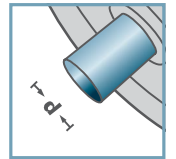
- Cono: Plástico
- Tapa final: Plástico



KF-50



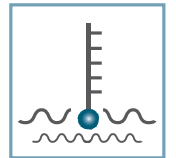
D [mm]  
50



d [mm]  
-



C [daN]  
-



T [°C]  
0° - 80°



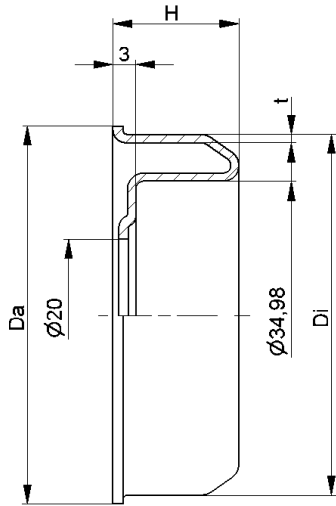
-



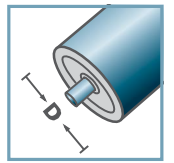
Envase [pzs.]



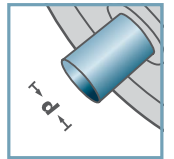
# Funda Cónica



MRK-40



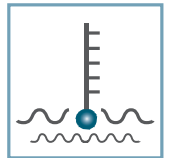
D [mm]  
50 - 60



d [mm]  
15



C [daN]  
-



T [°C]  
-



6202:  
D35; d15; H11



Envase [pzs.]

MRK-40				
Tipo	Di ±0,1	Da	H	t
MRK-50x1,5.40	47,3	49,5	16	1,2
MRK-50x2,0.40	46,3	49,5	16	1,2
MRK-60x2,0.40	56,3	59,5	16,5	1,5
MRK-60x3,0.40	54,3	59,5	16,5	1,5

Otras medidas a consultar!

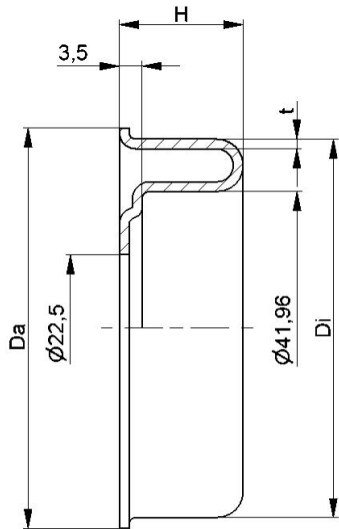
☛ Alojamiento: Acero cincado



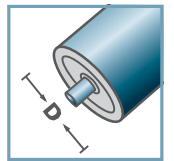
# Alojamiento metálico

Esta información sustituye todas las anteriores. Los datos corresponden al estado actual, reservándonos es derecho de cualquier cambio.

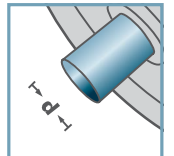
Estos datos indicados no eximen al usuario de su responsabilidad de una utilización y/o manipulación apropiada.



MRK-6004



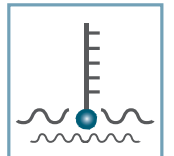
D [mm]  
63,5



d [mm]  
20



C [daN]  
-



T [°C]  
-



6004:  
D42; d20; H12

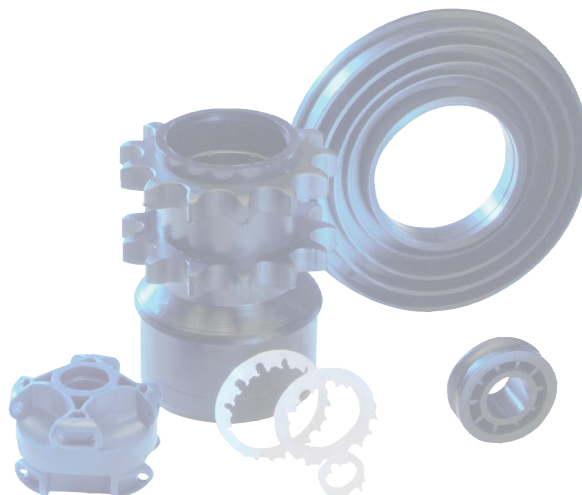


Envase [pzs.]

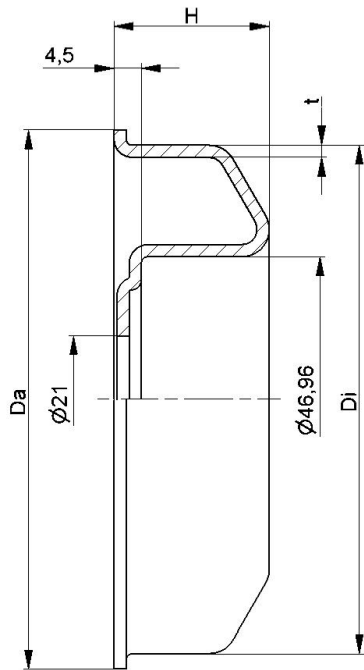
MRK-6004				
Tipo	Di ±0,1	Da	H	t
MRK-63,5x2,9/6004	58,1	61,5	19,0	1,5

Otras medidas a consultar!

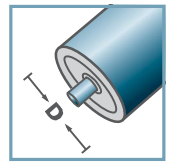
☛ Alojamiento: Acero cincado



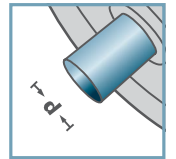
# Alojamiento metálico



MRK-6204



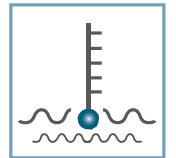
D [mm]  
80 - 108



d [mm]  
20



C [daN]  
-



T [°C]  
-



6204:  
D47; d20; H14



Envase [pzs.]

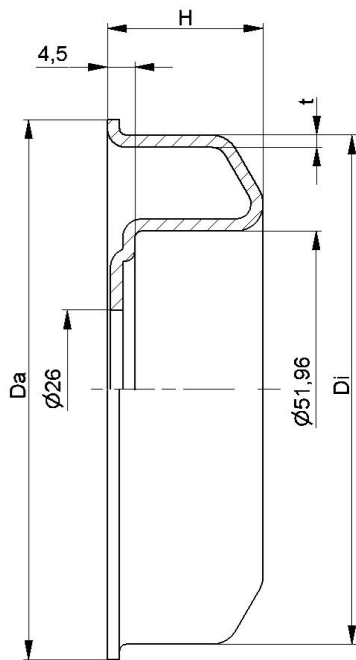
MRK-6204				
Tipo	Di ±0,1	Da	H	t
MRK-80x2,0/6204	76,5	79,5	23,5	2,0
MRK-80x3,0/6204	74,5	79,5	23,5	2,0
MRK-89x3,0/6204	83,5	88,5	23,5	2,0
MRK-89x3,25/6204	83,0	88,5	23,5	2,0
MRK-108x3,25/6204	102,0	107,5	25,0	2,0

Otras medidas a consultar!

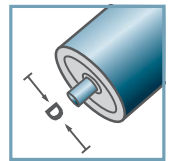
Alojamiento: Acero cincado



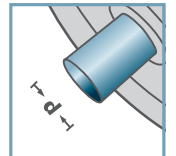
# Alojamiento metálico



MRK-6205



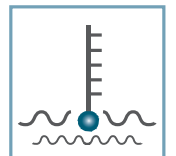
D [mm]  
80 - 108



d [mm]  
25



C [daN]  
-



T [°C]  
-



6205:  
D52; d25; H15



Envase [pzs.]

MRK-6205				
Tipo	Di ±0,1	Da	H	t
MRK-80x3,0/6205	74,5	79,5	23,5	2,0
MRK-89x3,0/6205	83,5	88,5	24,5	2,0
MRK-108x3,25/6205	102,0	107,5	25,5	2,0

Otras medidas a consultar!

☛ Alojamiento: Acero cincado



# Alojamiento metálico