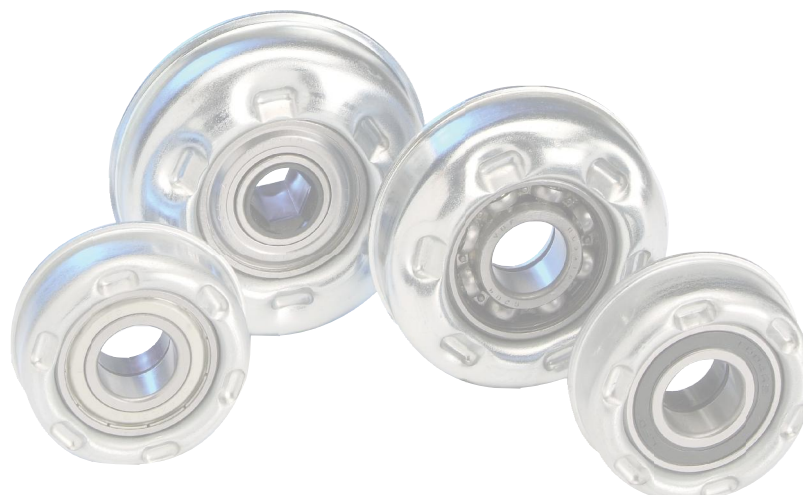


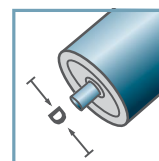
MTS-46			
Type	Di ±0.1	Da ±0.2	force portante C [daN]
MTS-63,5x2,9.46	58,1	61,5	200

Des dimensions ultérieures sur demande!

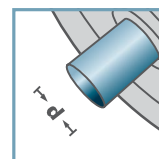
- Boitier: acier, zingué
- Douille d'écartement: plastique
- Palier 6004



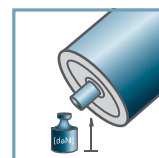
MTS-46



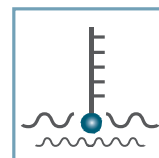
D [mm]
63,5



d [mm]
20



C [daN]
200



T [°C]
0° - 100°

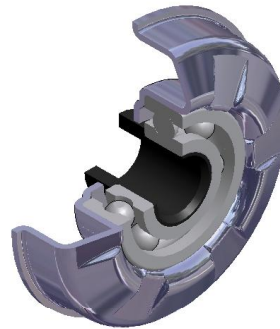
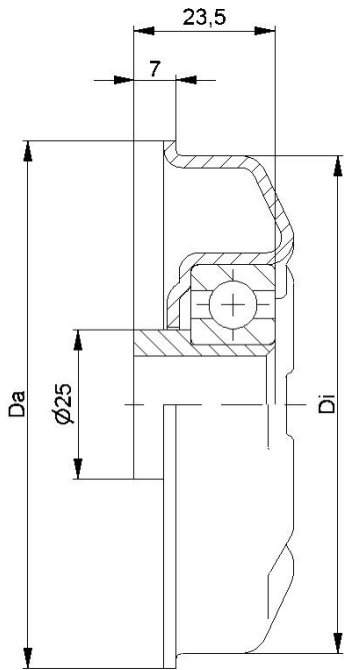


EP 2

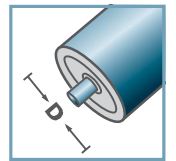


Carton [pc.]

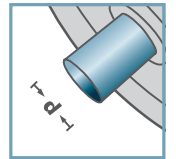
50/100



MTS-44



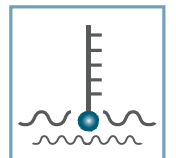
D [mm]
80 - 108



d [mm]
16; 17; SW14



C [daN]
250



T [°C]
0° - 100°



EP 2



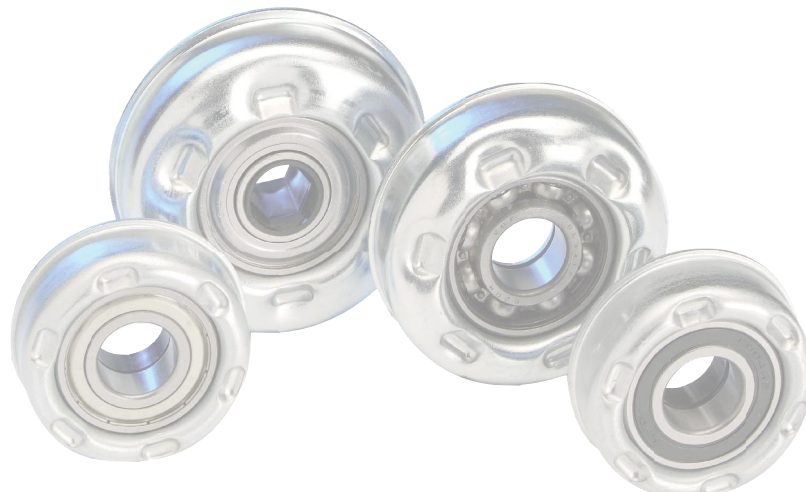
Carton [pc.]

50

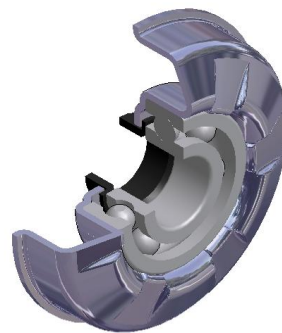
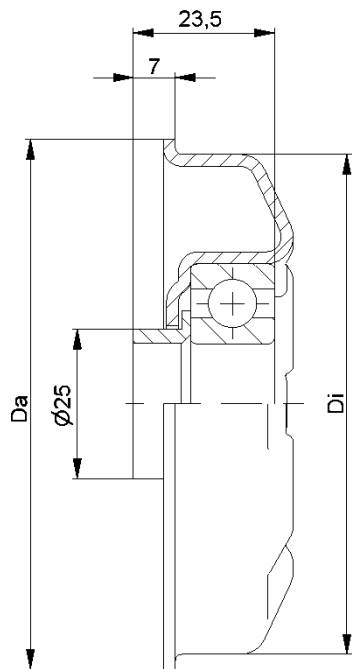
MTS-44			
Type	Di ±0.1	Da ±0.2	force portante C [daN]
MTS-80x2,0.44	76,5	79,5	250
MTS-80x3,0.44	74,5	79,5	250
MTS-89x3,0.44	83,5	88,5	250
MTS-89x3,25.44	83,0	88,5	250
MTS-108x3,25.44	102,0	107,5	250

Des dimensions ultérieures sur demande!

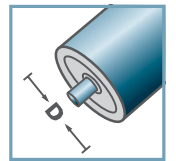
- ☛ Boitier: acier, zingué
- ☛ Douille de réduction: plastique
- ☛ Palier 6204



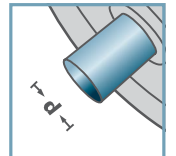
MTS



MTS-44



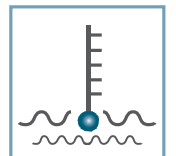
D [mm]
80 - 108



d [mm]
20



C [daN]
250



T [°C]
0° - 100°



EP 2



Carton [pc.]

50

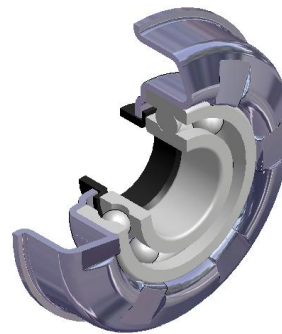
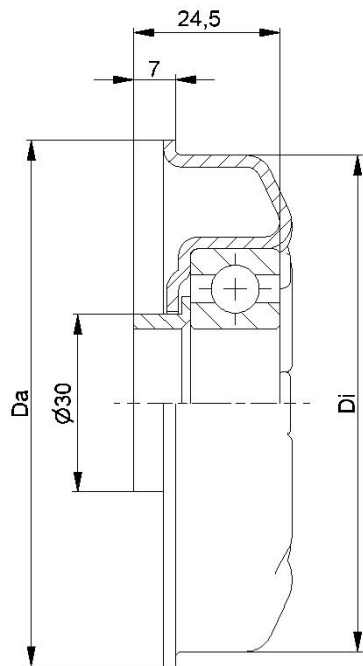
MTS-44			
Type	Di ±0.1	Da ±0.2	force portante C [daN]
MTS-80x2,0.44	76,5	79,5	250
MTS-80x3,0.44	74,5	79,5	250
MTS-89x3,0.44	83,5	88,5	250
MTS-89x3,25.44	83,0	88,5	250
MTS-108x3,25.44	102,0	107,5	250

Des dimensions ultérieures sur demande!

- ☛ Boîtier: acier, zingué
- ☛ Douille d'écartement: plastique
- ☛ Palier 6204



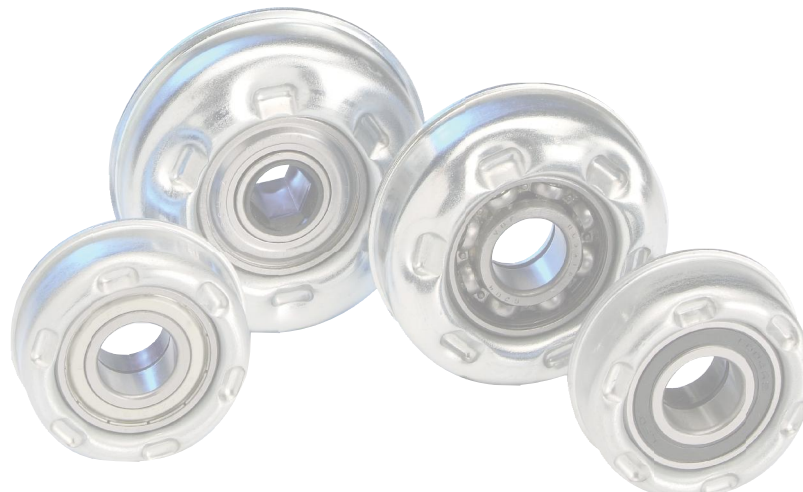
MTS



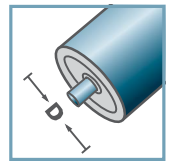
MTS-47			
Type	Di ±0.1	Da ±0.2	force portante C [daN]
MTS-89x3,0.47	83,5	88,5	250
MTS-108x3,25.47	102,0	107,5	250

Des dimensions ultérieures sur demande!

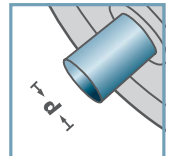
- ☛ Boitier: acier, zingué
- ☛ Douille d'écartement: plastique
- ☛ Palier 6205



MTS-47



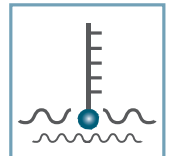
D [mm]
89 - 108



d [mm]
25



C [daN]
250



T [°C]
0° - 100°

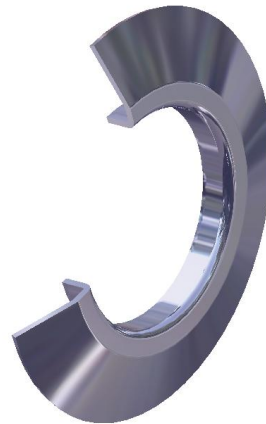
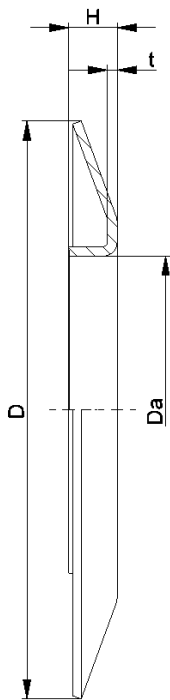


EP 2

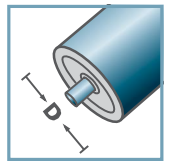


Carton [pc.]

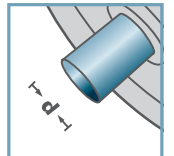
50



BS-



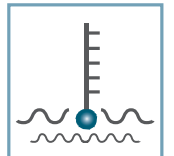
D [mm]
50 - 108



d [mm]
-



C [daN]
-



T [°C]
-



-



Carton [pc.]



BS-				
Type	Da ±0.1	D -2	H ±0.5	t
BS-50-130	49,9	130	10	1,5
BS-60-130	59,9	130	10	1,5
BS-80-150	79,9	150	14	2,5
BS-89-150	88,9	150	14	2,5
BS-108-150	107,9	150	14	2,5

Des dimensions ultérieures sur demande!

Disque de guidage: acier



MTS