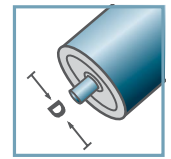
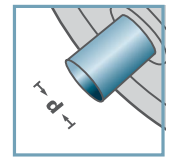


KTR-.00 FA
KTR-.01 FA



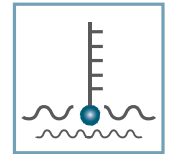
D [mm]
20, 30, 40, 50



d [mm]
6; 8; 10



C [daN]
8 - 20



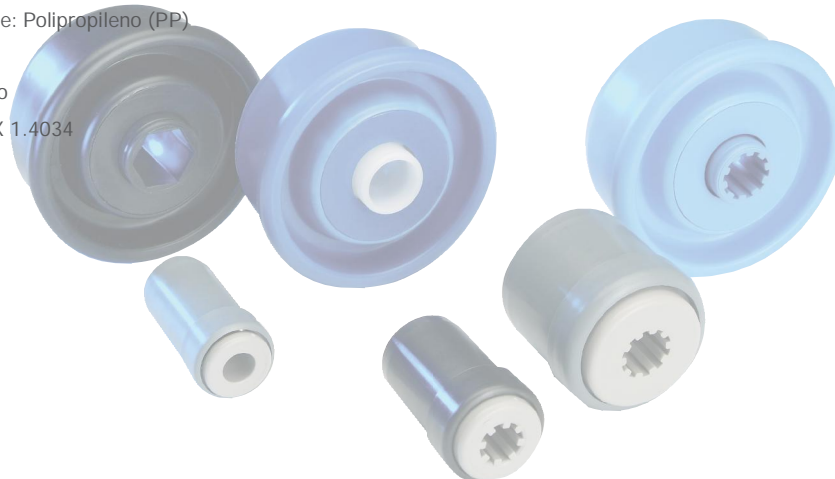
T [°C]
0° - 80°



KTR-.00/.01 FA						
Tipo	Normal .00	Inox .01	Di +0,25	Da	d	carga máxima C [daN]
KTR-20x1,5	x	x	17,1	19,9	6	8
KTR-30x1,8	x	x	26,5	29,9	8/10	10
KTR-40x2,3	x	x	35,5	39,9	8/10	10
KTR-50x2,8	x	x	44,6	49,9	8/10	20

Otras medidas a consultar!

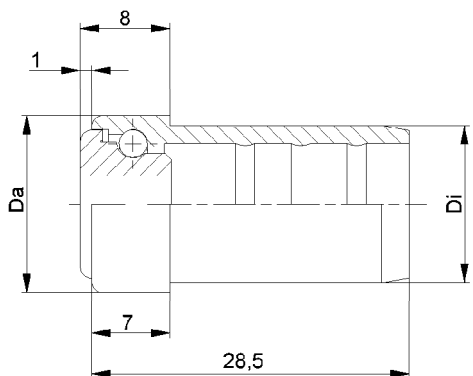
- ☛ Alojamiento: Polipropileno (PP)
- ☛ Buje: Polioximetileno (POM)
- ☛ Jaula: Polioximetileno (POM)
- ☛ Exe: Polioximetileno (POM)
- ☛ Tapa del cojinete: Polipropileno (PP)
- ☛ Bolas, muelle
 - ☛ 00: Acero
 - ☛ 01: INOX 1.4034



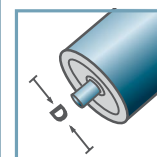
Caja [pzs.]

ø20: 500/1000
ø30: 250/500
ø40: 250/500
ø50: 250

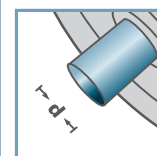
KTR



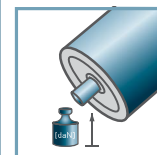
KTR-16.00
KTR-16.01



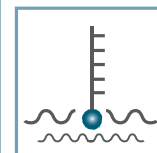
D [mm]
16



d [mm]
5; 6



C [daN]
3



T [°C]
0° - 80°



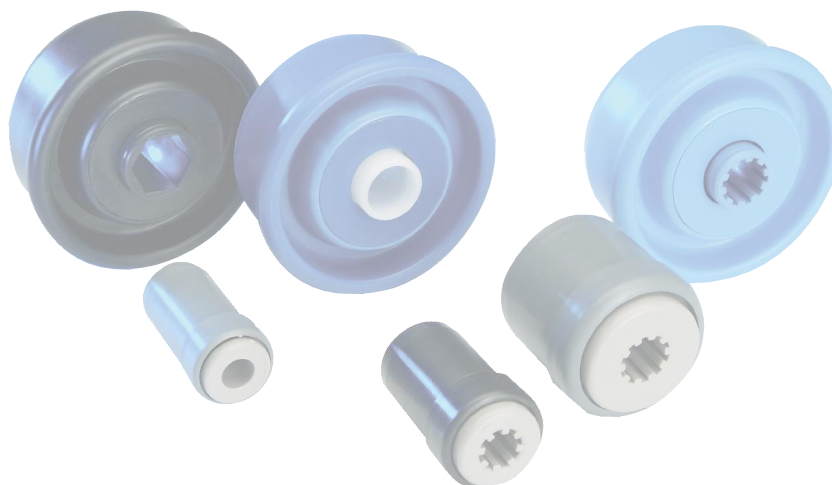
Envase [pzs.]

500/2500

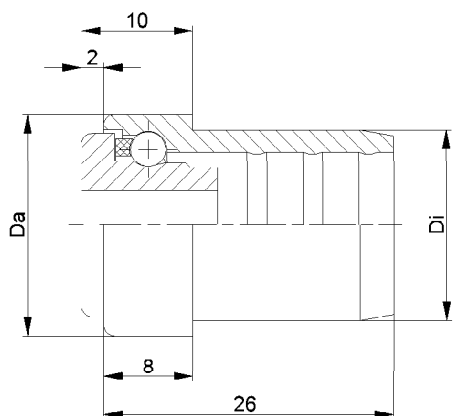
KTR-16.00/01					
Tipo	Normal .00	Inox .01	Di +0,15	Da	carga máxima C [daN]
KTR-16x1,0	x	x	14,1	15,9	3

Otras medidas a consultar!

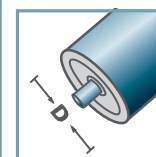
- ☛ Cazoleta: Plástico
- ☛ Buje: Plástico
- ☛ Bolas
 - ☛ 00: Acero
 - ☛ 01: INOX 1.4034



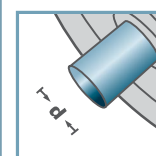
KTR



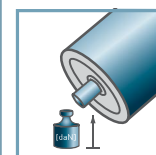
KTR-20.00
KTR-20.01



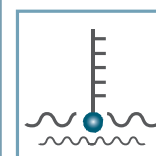
D [mm]
20



d [mm]
6; 8



C [daN]
5



T [°C]
0° - 80°



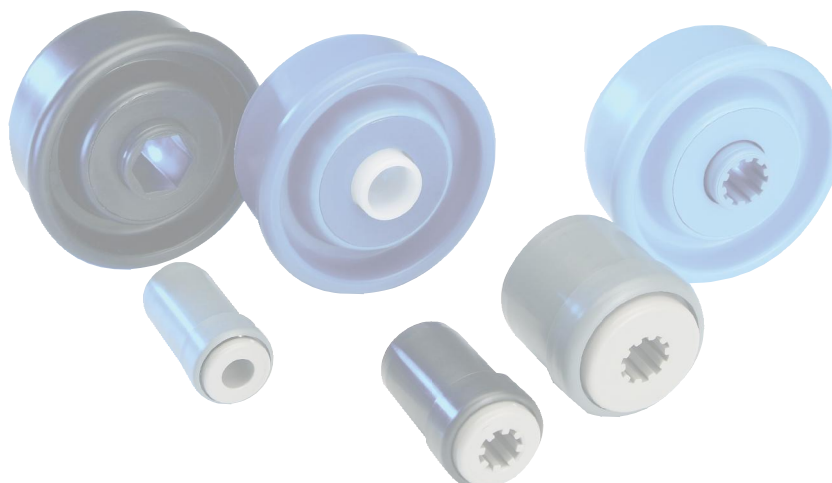
Envase [pzs.]

500/1000

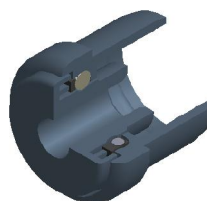
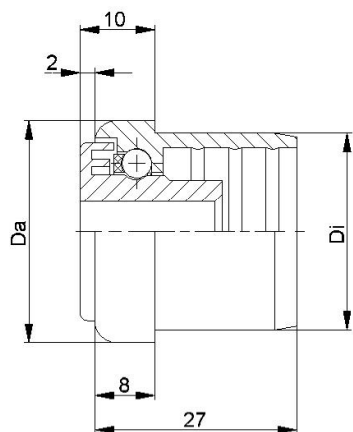
KTR-20.00/.01					
Tipo	Normal .00	Inox .01	Di +0,15	Da	carga máxima C [daN]
KTR-20x1,0	x	x	18,1	19,9	5
KTR-20x1,5	x	x	17,1	19,9	5

Otras medidas a consultar!

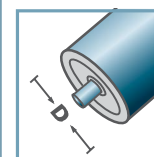
- ☛ Cazoleta: Plástico
- ☛ Buje: Plástico
- ☛ Jaula: Plástico
- ☛ Bolas
 - ☛ 00: Acero
 - ☛ 01: INOX 1.4034



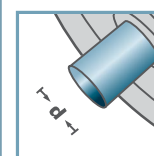
KTR



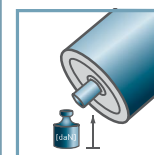
KTR-30.00
KTR-30.01



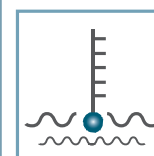
D [mm]
30



d [mm]
6; 8; 10



C [daN]
7



T [°C]
0° - 80°



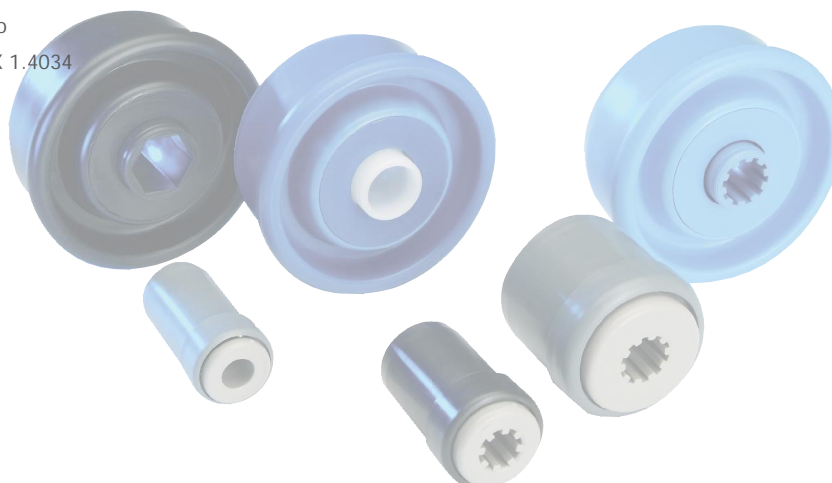
Envase [pzs.]

50/250/500

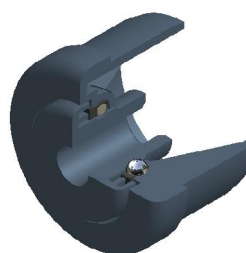
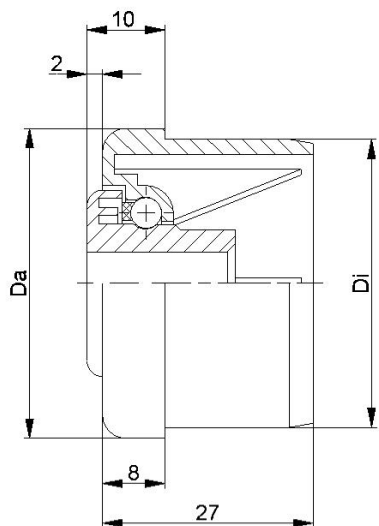
KTR-30.00/.01					
Tipo	Normal .00	Inox .01	Di +0,25	Da	carga máxima C [daN]
KTR-30x1,0	x	x	28,1	29,9	7
KTR-30x1,5	x	x	27,1	29,9	7
KTR-30x1,8	x	x	26,5	29,9	7
KTR-30x2,0	x	x	26,35	29,9	7

Otras medidas a consultar!

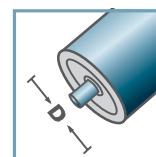
- ☛ Cazoleta: Plástico
- ☛ Buje: Plástico
- ☛ Jaula: Plástico
- ☛ Bolas
 - ☛ 00: Acero
 - ☛ 01: INOX 1.4034



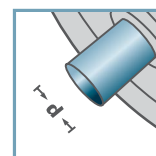
KTR



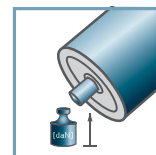
KTR-40.00
KTR-40.01



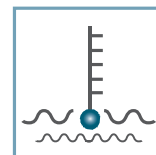
D [mm]
40



d [mm]
6; 8; 10



C [daN]
7



T [°C]
0° - 80°



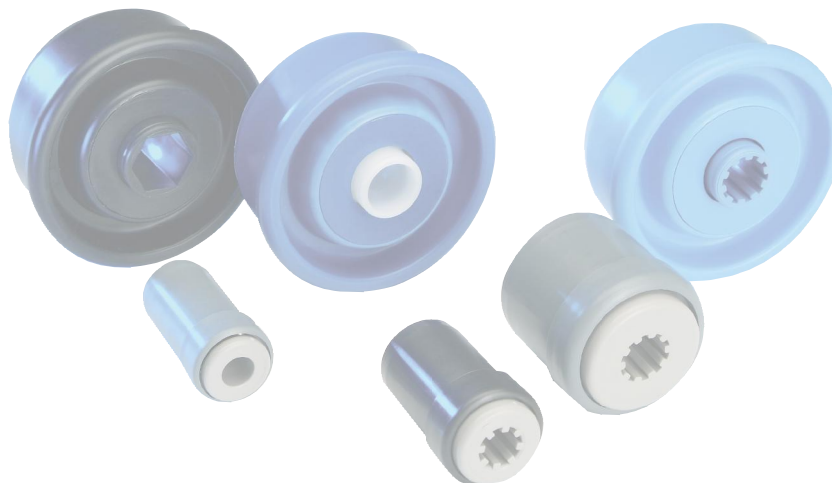
Envase [pzs.]

50/250

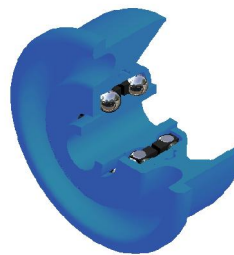
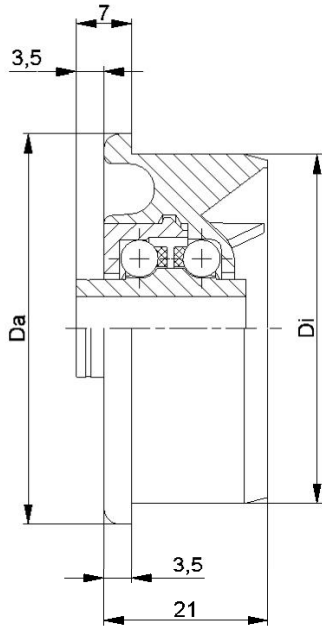
KTR-40.00/.01					
Tipo	Normal .00	Inox .01	Di +0,25	Da	carga máxima C [daN]
KTR-40x1,5	x	x	37,1	39,9	7
KTR-40x2,3	x	x	35,5	39,9	7

Otras medidas a consultar!

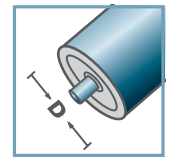
- ☛ Cazoleta: Plástico
- ☛ Buje: Plástico
- ☛ Jaula: Plástico
- ☛ Bolas
 - ☛ 00: Acero
 - ☛ 01: INOX 1.4034



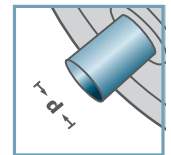
KTR



KTR-02
KTR-03



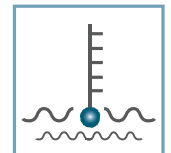
D [mm]
50



d [mm]
8; 10



C [daN]
15



T [°C]
0° - 80°



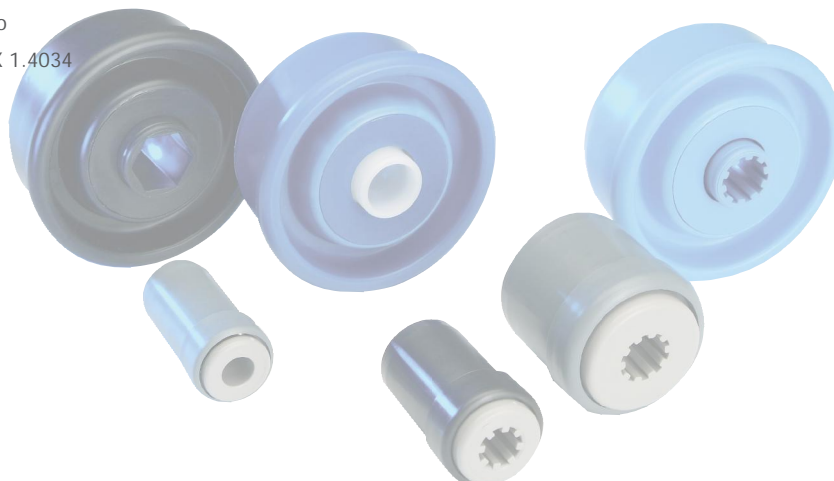
Envase [pzs.]

50x1,5: 250
50x2,0: 250
50x2,8: 250

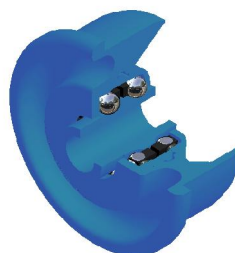
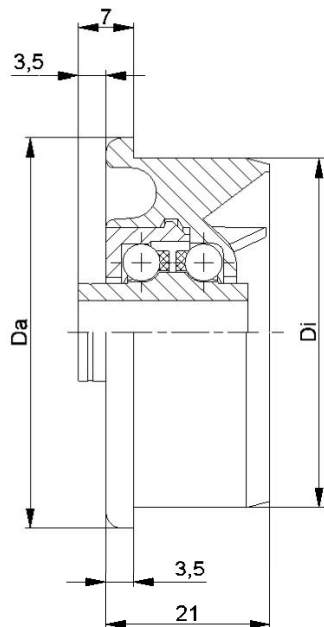
KTR-02/03					
Tipo	Normal .02	Inox .03	Di +0,2	Da	carga máxima C [daN]
KTR-50x1,5	x	x	47,3	49,9	15
KTR-50x2,0	x	x	46,3	49,9	15
KTR-50x2,8	x	x	44,6	49,9	15

Otras medidas a consultar!

- ☛ Cazoleta: Plástico
- ☛ Buje: Plástico
- ☛ Tapa del cojinete: Plástico
- ☛ Jaula: Plástico
- ☛ Bolas
 - ☛ 02: Acero
 - ☛ 03: INOX 1.4034



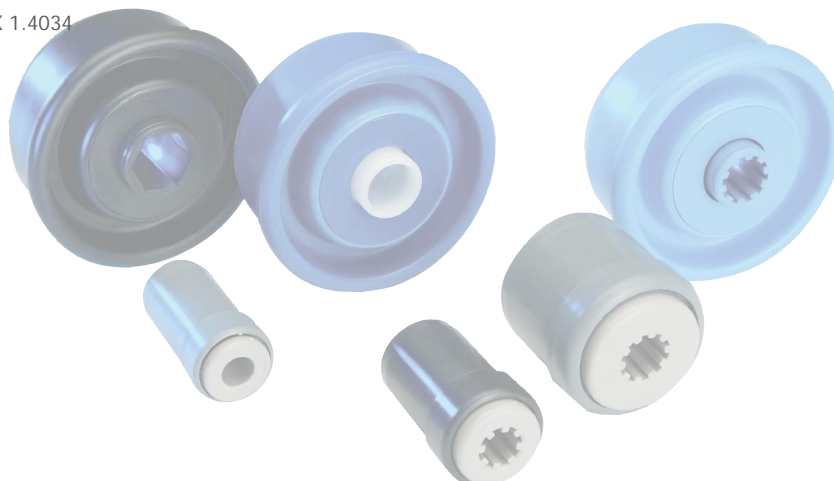
KTR



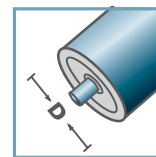
KTR-02/03					
Tipo	Normal .02	Inox .03	Di +0,2	Da	carga máxima C [daN]
KTR-50x1,5	x	x	47,3	49,9	10
KTR-50x2,8	x	x	44,6	49,9	10

Otras medidas a consultar!

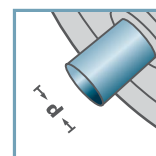
- ☛ Cazoleta: Plástico
- ☛ Buje: Plástico
- ☛ Tapa del cojinete: Plástico
- ☛ Jaula: Plástico
- ☛ Bolas
 - ☛ 02: Acero
 - ☛ 03: INOX 1.4034



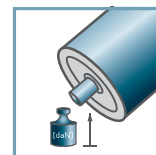
KTR-02
KTR-03



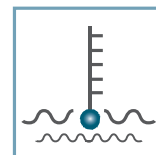
D [mm]
50



d [mm]
12; SW11



C [daN]
10



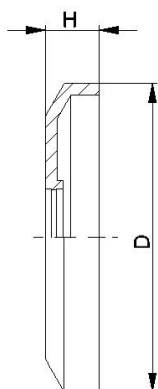
T [°C]
0° - 80°



Envase [pzs.]

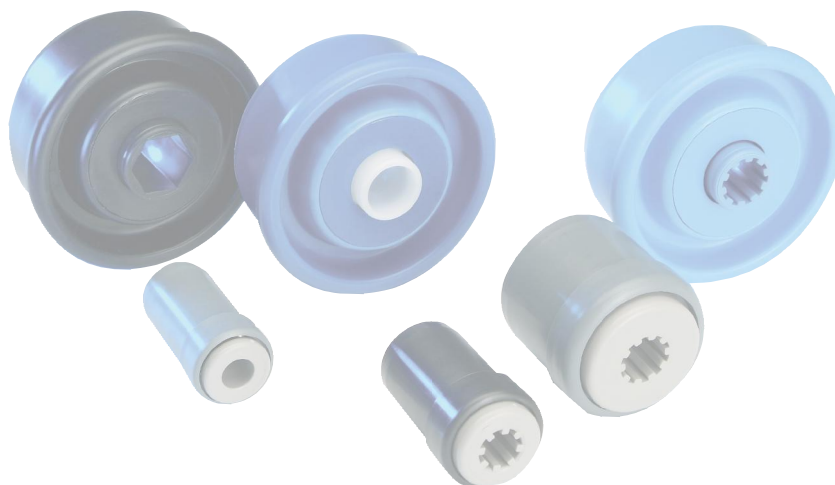
250

KTR

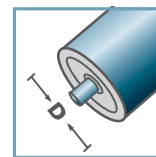


DK-KTR		
Tipo	D	H
DK-KTR-02	40,5	7
Otras medidas a consultar!		

🔧 Tapa obturadora: Plástico

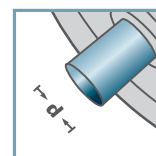


DK-KTR-02



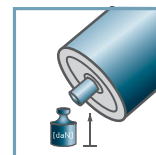
D [mm]

-



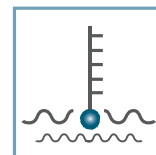
d [mm]

-



C [daN]

-



T [°C]

0° - 80°



-



Envase [pzs.]

-



-

KTR

