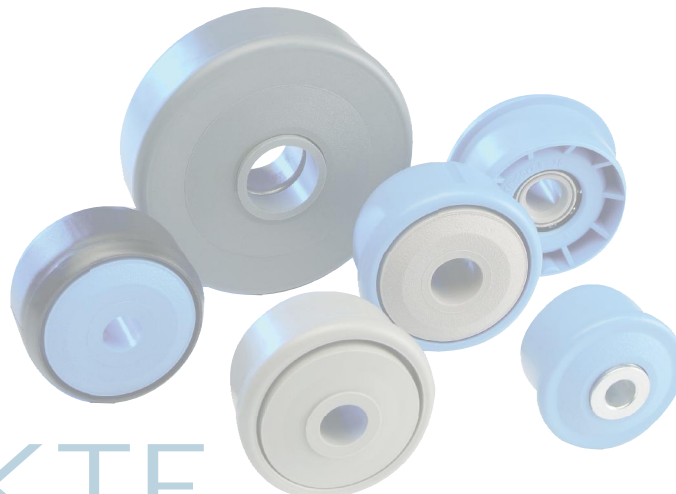


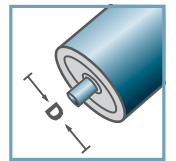
| KTR-30 | | | |
|---------------|---------|------|----------------------|
| Tipo | Di +0,2 | Da | carga máxima C [daN] |
| KTR-50x1,5.30 | 47,3 | 49,9 | 80 |
| KTR-50x2,8.30 | 44,6 | 49,9 | 80 |
| KTR-60x1,5.30 | 57,3 | 59,9 | 80 |

Otras medidas a consultar!

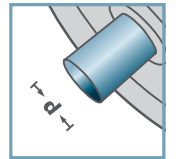
- ☛ Cazoleta: Plástico
 - ☛ Tapa-laberinto: Plástico
 - ☛ Cojinete RL-30
 - ☛ Alojamiento de bolas: Acero templado
 - ☛ Buje: Acero templado
 - ☛ Jaula: Plástico
 - ☛ Bolas: Acero
- ¡Cuidado! Los laberintos simple eje 15 mm son separados y tienen que estar fijado en montaje.



KTR-30



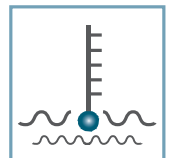
D [mm]
50 - 60



d [mm]
10; 12; 15; SW11



C [daN]
80



T [°C]
0° - 80°



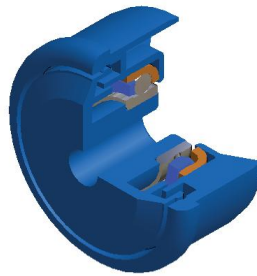
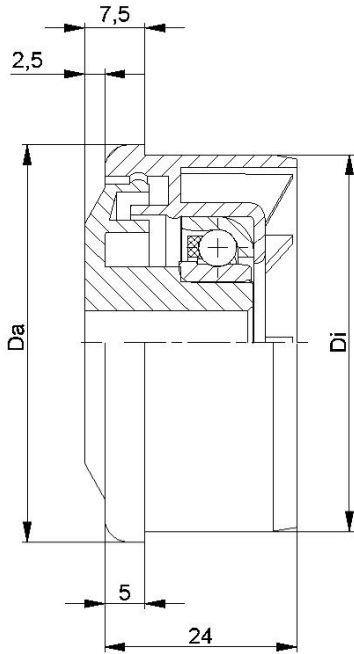
aceite



Envase [pzs.]

ø50: 250
ø60: 200

KTR/KTE

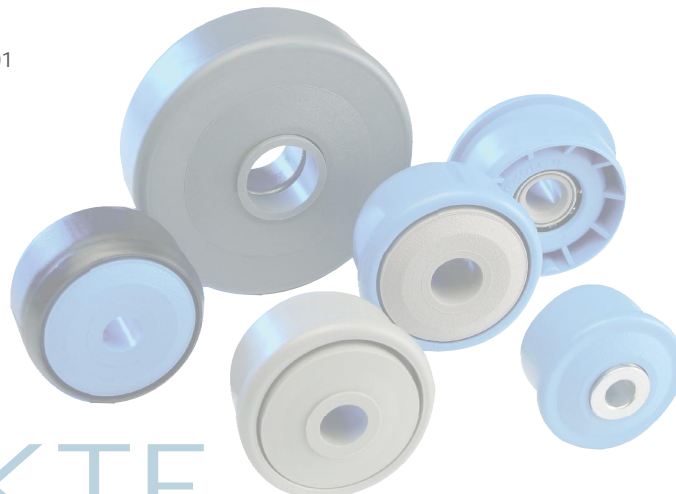


| KTR-31 | | | |
|---------------|---------|------|----------------------|
| Tipo | Di +0,2 | Da | carga máxima C [daN] |
| KTR-50x1,5.31 | 47,3 | 49,9 | 25 |
| KTR-50x2,8.31 | 44,6 | 49,9 | 25 |
| KTR-60x1,5.31 | 57,3 | 59,9 | 25 |

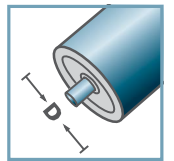
Otras medidas a consultar!

- ☛ Cazoleta: Plástico
- ☛ Tapa-laberinto: Plástico
- ☛ Cojinete RL-31
 - ☛ Alojamiento de bolas: INOX 1.4301
 - ☛ Buje: INOX 1.4305
 - ☛ Jaula: Plástico
 - ☛ Bolas: INOX 1.4301

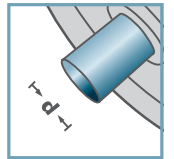
¡Cuidado! Los laberintos simple eje 15 mm son separados y tienen que estar fijado en montaje.



KTR-31



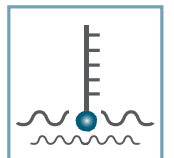
D [mm]
50 - 60



d [mm]
10; 12; 15; SW11



C [daN]
25



T [°C]
0° - 80°



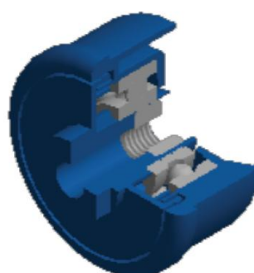
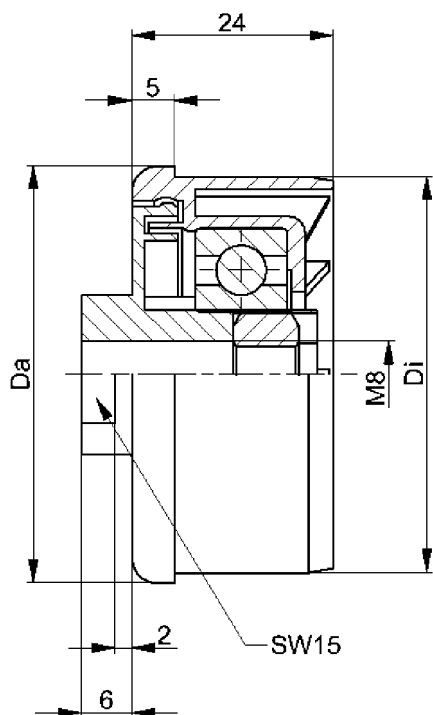
aceite



Envase [pzs.]

ø50: 250
ø60: 200

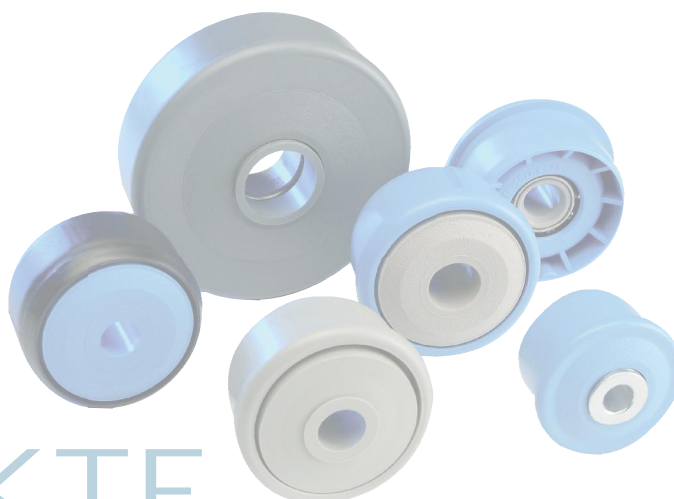
KTR/KTE



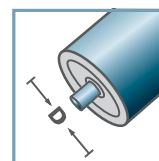
| KTR-40.M8 | | | |
|---------------|---------|------|----------------------|
| Tipo | Di +0,2 | Da | carga máxima C [daN] |
| KTR-50x1,5.40 | 47,3 | 49,9 | 80 |

Otras medidas a consultar!

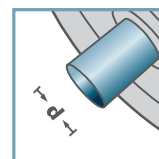
- ☛ Cazoleta: Plástico
- ☛ Tapa-laberinto: Plástico
- ☛ Cojinete 6202
- ☛ Tuerca hexagonal



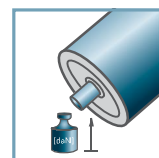
KTR-40.M8



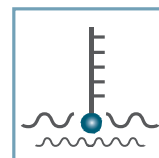
D [mm]
50



d [mm]
M8



C [daN]
80



T [°C]
0° - 80°



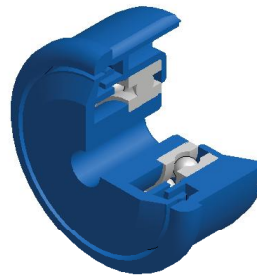
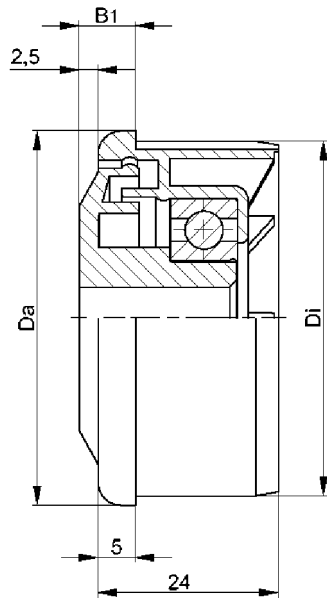
EP 2



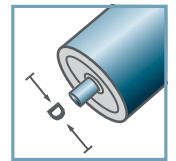
Envase [pzs.]

ø50: 250

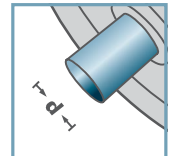
KTR/KTE



KTR-42



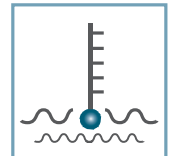
D [mm]
40 - 60



d [mm]
10; 12; 15; SW11



C [daN]
80; 120



T [°C]
0° - 80°



EP 2



Envase [pzs.]

ø40: -
ø50: 250
ø60: 200

| KTR-42 | | | | |
|---------------|----------|------|-----|----------------------|
| Tipo | Di +0,25 | Da | B1 | carga máxima C [daN] |
| KTR-40x1,5.42 | 37,2 | 39,9 | 9,0 | 120 |
| KTR-50x1,5.42 | 47,3 | 49,9 | 7,5 | 80 |
| KTR-50x2,0.42 | 46,3 | 49,9 | 7,5 | 80 |
| KTR-50x2,8.42 | 44,6 | 49,9 | 7,5 | 80 |
| KTR-60x1,5.42 | 57,3 | 59,9 | 7,5 | 80 |
| KTR-60x2,0.42 | 56,3 | 59,9 | 7,5 | 80 |

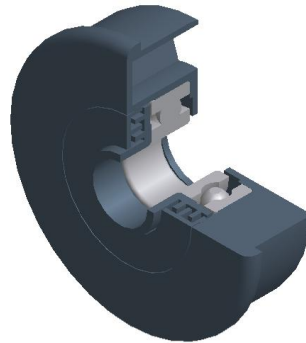
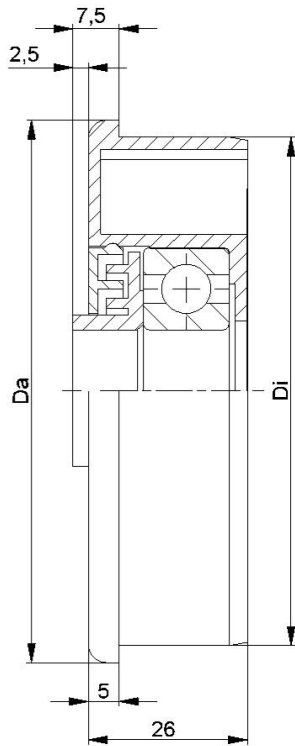
Otras medidas a consultar!

- ☛ Cazoleta: Plástico
- ☛ Tapa-laberinto: Plástico
- ☛ Cojinete 6002

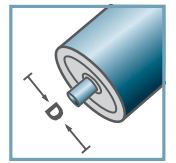
¡Cuidado! Los laberintos simple eje 15 mm son separados y tienen que estar fijado en montaje.



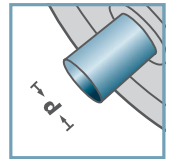
KTR/KTE



KTR-44



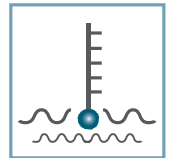
D [mm]
89



d [mm]
20



C [daN]
150



T [°C]
0° - 80°



EP 2



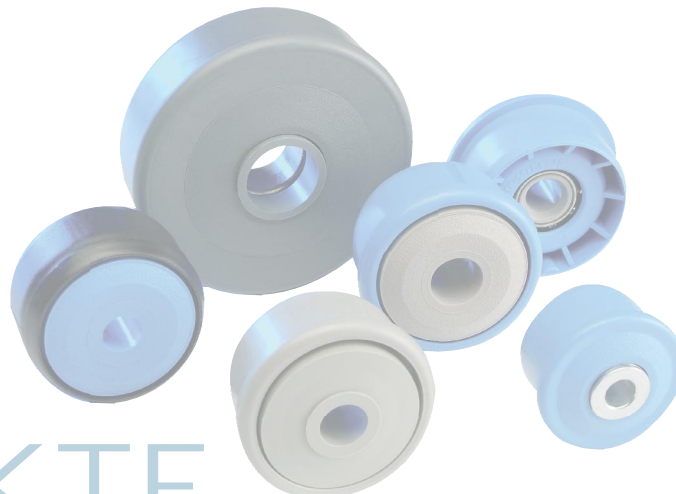
Envase [pzs.]

80

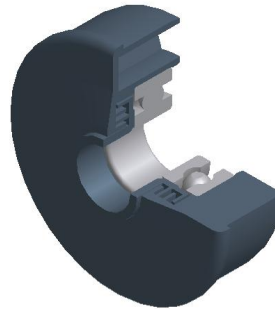
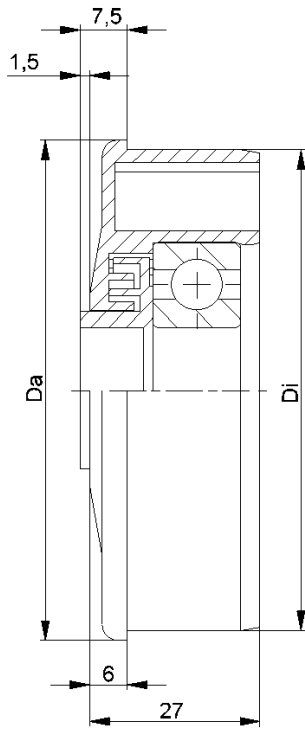
| KTR-44 | | | |
|---------------|---------|------|----------------------|
| Tipo | Di +0,2 | Da | carga máxima C [daN] |
| KTR-89x3,0.44 | 83,3 | 88,9 | 150 |

Otras medidas a consultar!

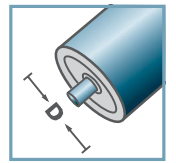
- ☛ Cazoleta: Plástico
- ☛ Laberinto interior: Plástico
- ☛ Laberinto exterior: Plástico
- ☛ Cojinete 6204



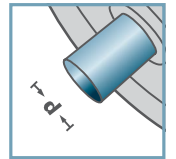
KTR/KTE



KTR-43/44



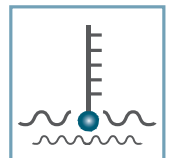
D [mm]
63,5 - 80



d [mm]
6303: 17
6204: 20



C [daN]
150



T [°C]
0° - 80°



EP 2



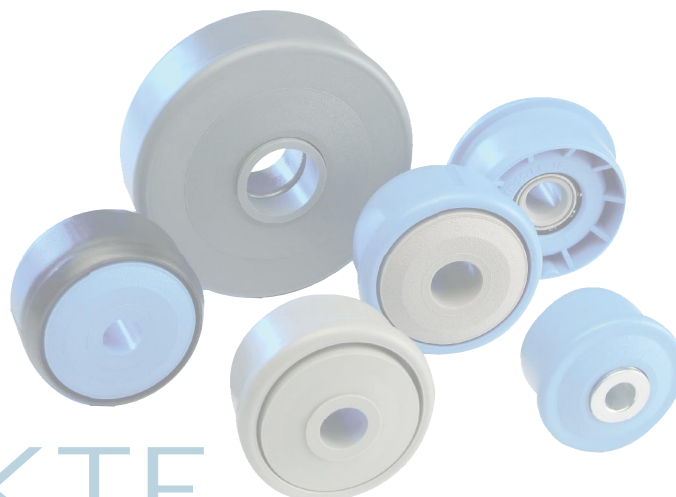
Envase [pzs.]

100

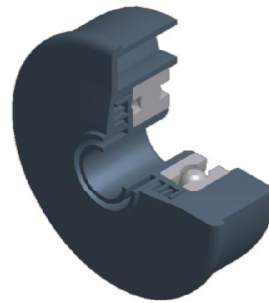
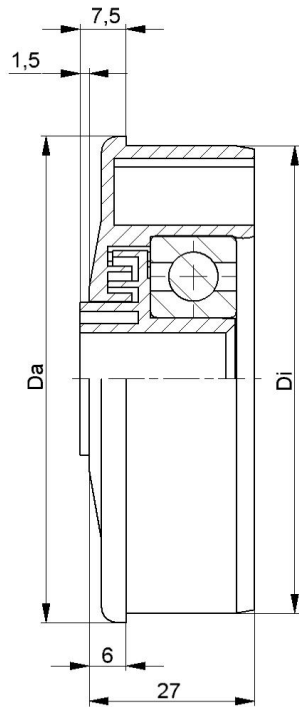
| KTR-43/44 | | | |
|---------------------|---------|------|----------------------|
| Tipo | Di +0,2 | Da | carga máxima C [daN] |
| KTR-63,5x2,9.43/.44 | 58,0 | 63,4 | 150 |
| KTR-80x2,0.43/.44 | 76,4 | 79,9 | 150 |

Otras medidas a consultar!

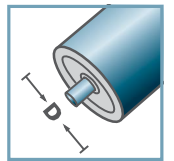
- ☛ Cazoleta: Plástico
- ☛ Tapa-laberinto: Plástico
- ☛ Cojinete 6303/6204



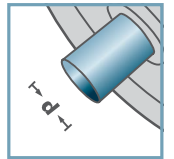
KTR/KTE



KTR-43/44



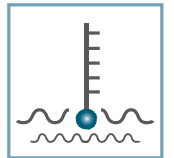
D [mm]
63,5 - 80



d [mm]
6303: 12
6204: 15



C [daN]
150



T [°C]
0° - 80°



EP 2



Envase [pzs.]

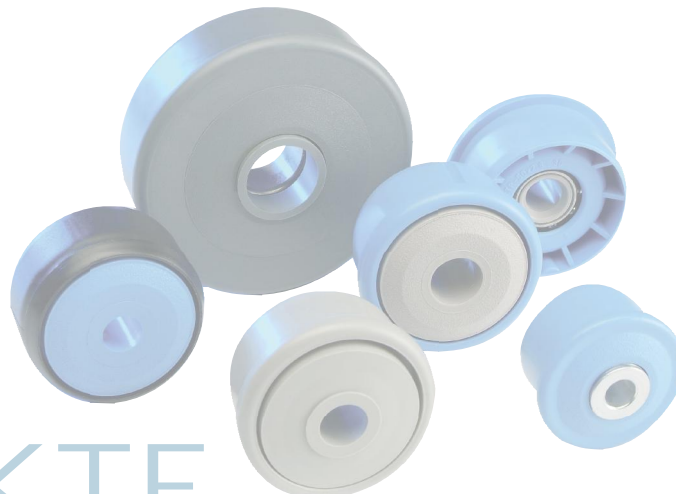
100

KTR-43/44

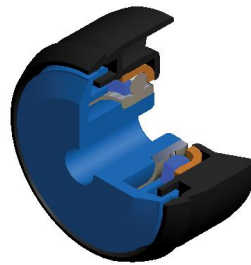
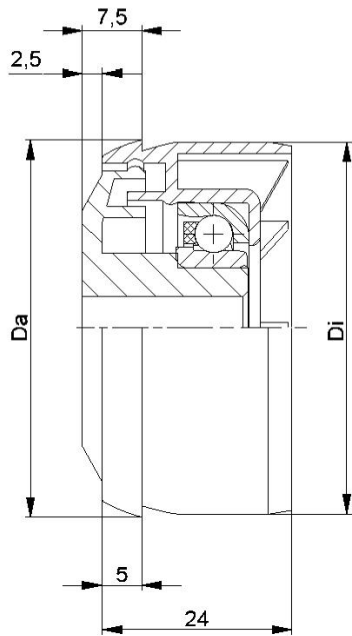
| Tipo | Di +0,2 | Da | carga máxima C [daN] |
|---------------------|---------|------|-------------------------|
| KTR-63,5x2,9.43/.44 | 58,0 | 63,4 | 150 |
| KTR-80x2,0.43/.44 | 76,4 | 79,9 | 150 |

Otras medidas a consultar!

- ☛ Cazoleta: Plástico
- ☛ Tapa-laberinto: Plástico
- ☛ Cojinete 6303/6204



KTR/KTE

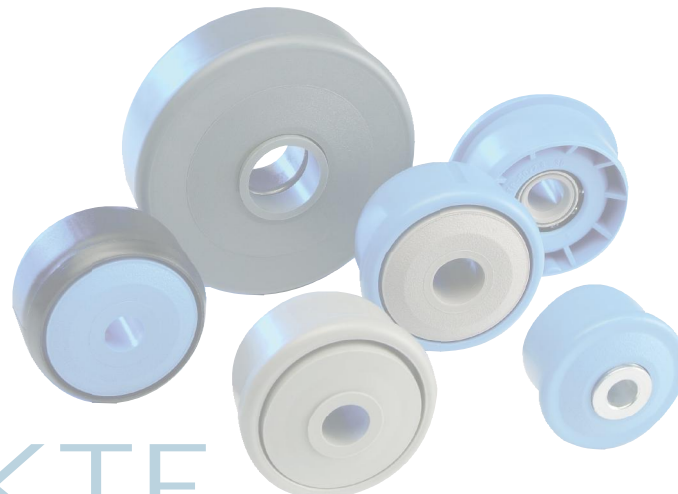


| KTE-30 | | | |
|---------------|---------|------|----------------------|
| Tipo | Di +0,3 | Da | carga máxima C [daN] |
| KTE-50x1,5.30 | 47,1 | 47,9 | 80 |

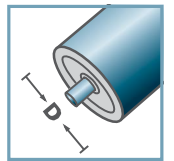
Otras medidas a consultar!

- ☛ Cazoleta: Plástico
- ☛ Tapa-laberinto: Plástico
- ☛ Cojinete RL-30
 - ☛ Alojamiento de bolas: Acero templado
 - ☛ Buje: Acero templado
 - ☛ Jaula: Plástico
 - ☛ Bolas: Acero

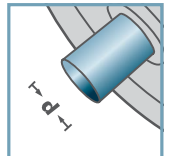
¡Cuidado! Los laberintos simple eje 15 mm son separados y tienen que estar fijado en montaje.



KTE-30



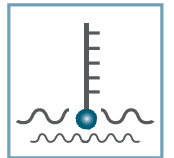
D [mm]
50



d [mm]
10; 12; 15; SW11



C [daN]
80



T [°C]
0° - 80°



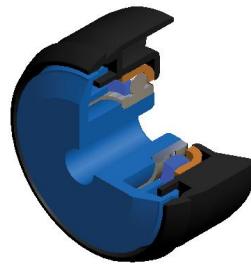
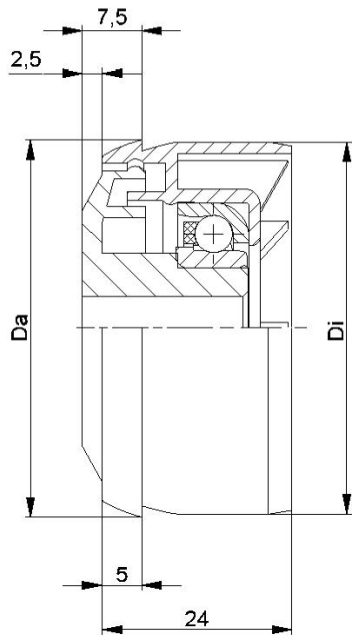
aceite



Envase [pzs.]

250

KTR/KTE

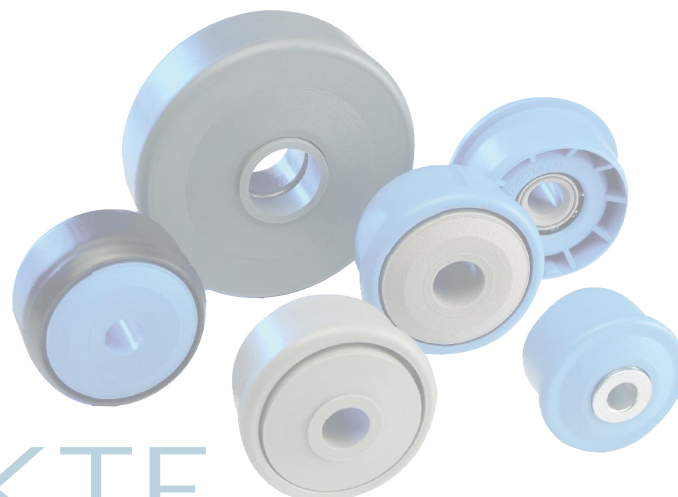


| KTE-31 | | | |
|---------------|---------|------|----------------------|
| Tipo | Di +0,3 | Da | carga máxima C [daN] |
| KTE-50x1,5.31 | 47,1 | 47,9 | 25 |

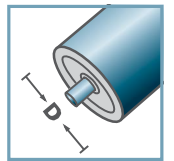
Otras medidas a consultar!

- ☛ Cazoleta: Plástico
- ☛ Tapa-laberinto: Plástico
- ☛ Cojinete RL-31
 - ☛ Alojamiento de bolas: INOX 1.4301
 - ☛ Buje: INOX 1.4305
 - ☛ Jaula: Plástico
 - ☛ Bolas: INOX 1.4301

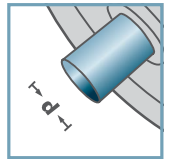
¡Cuidado! Los laberintos simple eje 15 mm son separados y tienen que estar fijado en montaje.



KTE-31



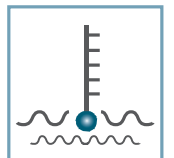
D [mm]
50



d [mm]
10; 12; 15; SW11



C [daN]
25



T [°C]
0° - 80°



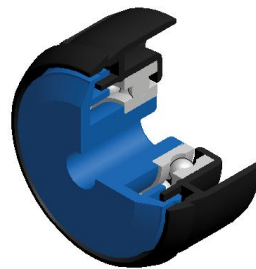
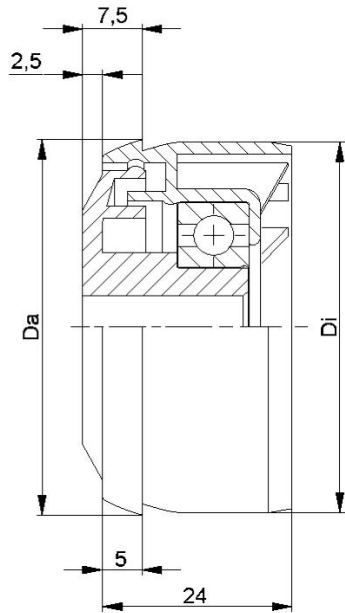
aceite



Envase [pzs.]

250

KTR/KTE

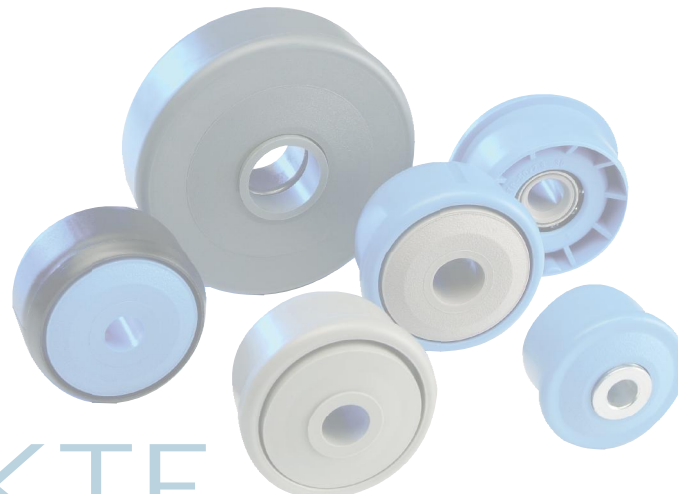


| KTE-42 | | | |
|---------------|---------|------|----------------------|
| Tipo | Di +0,3 | Da | carga máxima C [daN] |
| KTE-50x1,5.42 | 47,1 | 47,9 | 80 |

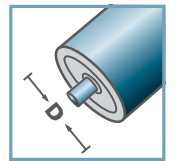
Otras medidas a consultar!

- ☛ Cazoleta: Plástico
- ☛ Tapa-laberinto: Plástico
- ☛ Cojinete 6002

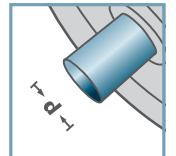
¡Cuidado! Los laberintos simples eje 15 mm son separados y tienen que estar fijado en montaje.



KTE-42



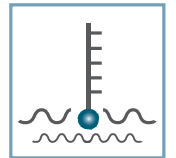
D [mm]
50



d [mm]
10; 12; 15; SW11



C [daN]
80



T [°C]
0° - 80°



EP 2



Envase [pzs.]

250

KTR/KTE