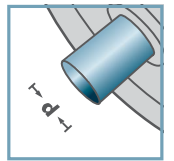


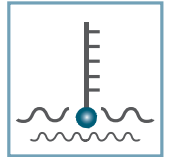
RL-0.280



d [mm]
10; 12; 12,8



C [daN]
7; 10



T [°C]
0° - 80°



RL-0.280		
Tipo	D	B
RL-0.280	28,0	7,6

Otras medidas a consultar!

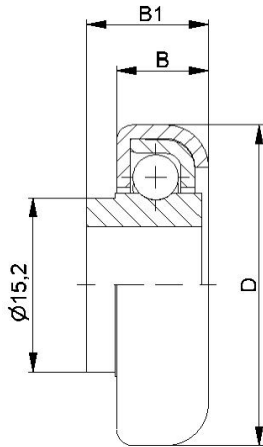
- ☛ Cápsula: Acero cincado
- ☛ Alojamiento: Acero
- ☛ Bolas: Acero
- ☛ Buje
 - ☛ Acero: (C=10daN)
 - ☛ Plástico: (C= 7daN); 0 - 80°



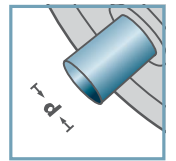
Envase [pzs.]

500

Rodamiento Anular



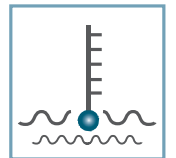
RL-0.280



10; 12



C [daN]
7; 10



T [°C]
0° - 80°



RL-0.280 con aleta

Tipo	D	B	B1
RL-0.280 m.B.	28,0	7,6	10,0

Otras medidas a consultar!

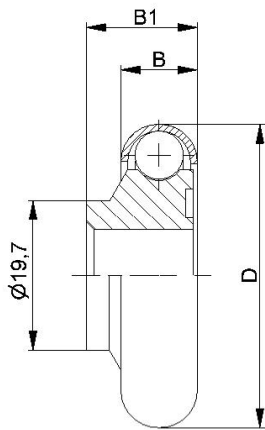
- ☛ Cápsula: Acero cincado
- ☛ Alojamiento: Acero
- ☛ Bolas: Acero
- ☛ Buje
 - ☛ Acero: (C=10daN)
 - ☛ Plástico: (C= 7daN); 0 - 80°



Envase [pzs.]

500

Rodamiento Anular



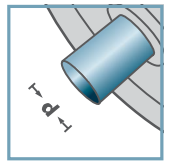
RL-0.400			
Tipo	D	B	B1
RL-0.400	40,0	10,0	14,5

Otras medidas a consultar!

- ☛ Cápsula: Acero cincado
- ☛ Bolas: Acero
- ☛ Buje: Plástico



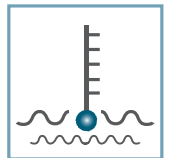
RL-0.400



d [mm]
12



C [daN]
7



T [°C]
0° - 80°



Envase [pzs.]

250

Rodamiento Anular