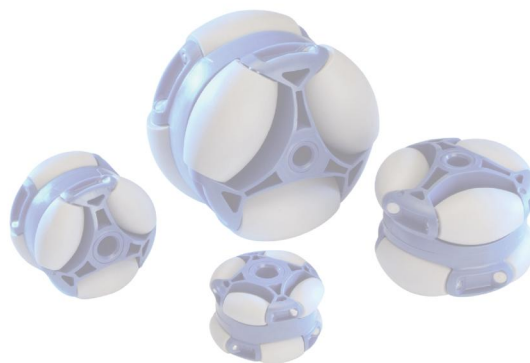


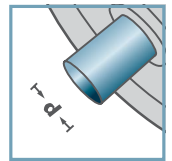
ASR-			
Tipo	D	B	carga máxima C [daN]
ASR-80	80	64	40

Otras medidas a consultar!

- ☛ Armazón: Plástico
- ☛ Rodillos convexos: Plástico
- ☛ Ejes: INOX 1.4301



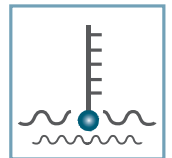
ASR-



d [mm]  
8; 12; 15; SW14



C [daN]  
40



T [°C]  
0° - 80°



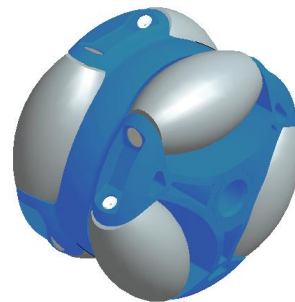
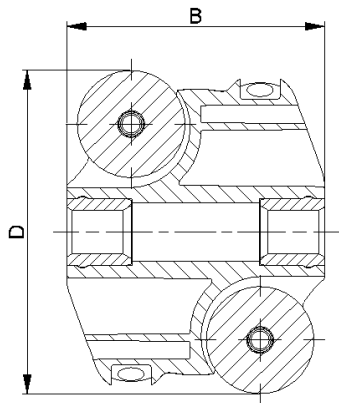
-



Envase [pzs.]

50

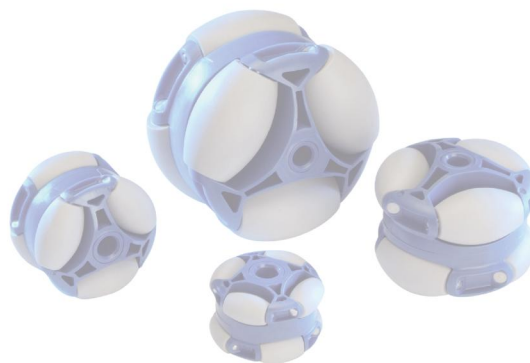
# Roldana multidireccional



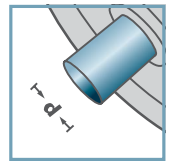
ASR-			
Tipo	D	B	carga máxima C [daN]
ASR-60	60	48	20
ASR-48	48	39	15
ASR-40	40	29	10

Otras medidas a consultar!

- ☛ Armazón: Plástico
- ☛ Rodillos convexos: Plástico
- ☛ Ejes: INOX 1.4301



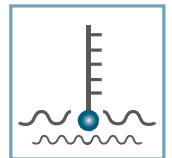
ASR-



d [mm]  
8; 10; SW9



C [daN]  
10 - 20



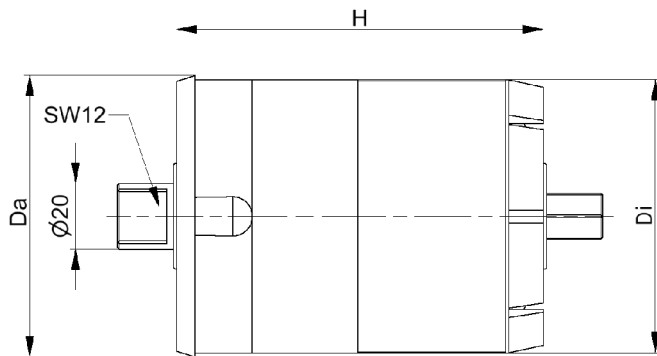
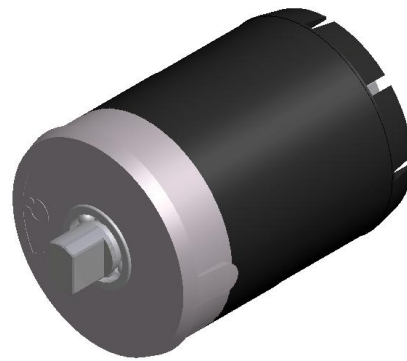
T [°C]  
0° - 80°



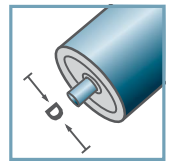
Envase [pzs.]

50

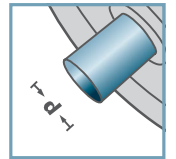
# Roldana multidireccional



BR-



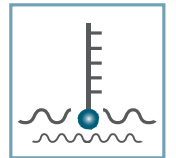
D [mm]  
89



d [mm]  
20



C [daN]  
250



T [°C]  
0° - 80°



EP2



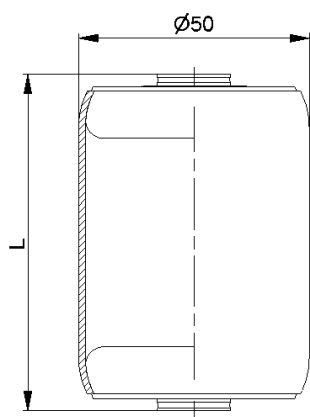
Envase [pzs.]

20

BR-89x3,0-				
Tipo	Da	Di	H	carga máxima [kg]
200	88,5	83	115	200
500	88,5	83	115	500
800	88,5	83	115	800
1200	88,5	83	115	1200



# Freno dinámico insertable



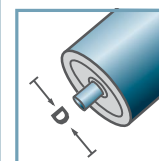
AMR-50x1,5.20		
Tipo	L	carga máxima C [daN]
AMR-50x1,5.20-66	66	160
AMR-50x1,5.20-73	73	160
AMR-50x1,5.20-80	80	160
AMR-50x1,5.20-100	100	160

**Otras medidas a consultar!**

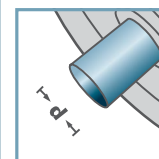
- ☛ Tubo: Acero cincado
- ☛ Cabezales: MTR-20



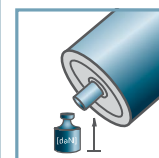
AMR-50.20



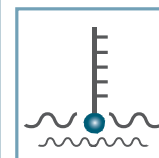
D [mm]  
50



d [mm]  
8; 10; 12; SW11



C [daN]  
160



T [°C]  
0° - 100°

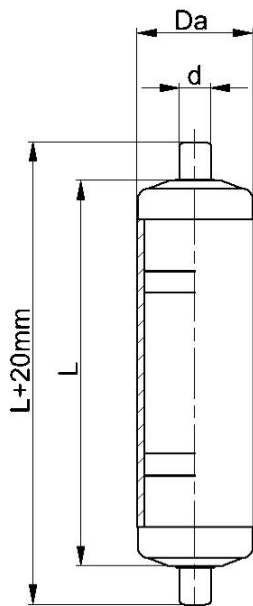


aceite

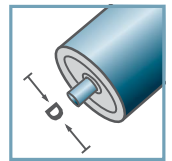


Envase [pzs.]

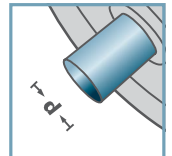
# Rodillo corto sin eje



AKR-00/01



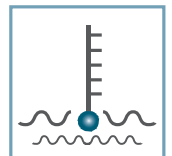
D [mm]  
20; 30; 40



d [mm]  
6; 8



C [daN]  
10; 15



T [°C]  
0° - 80°



Envase [pzs.]

AKR-00/01				
Tipo	D	d	L max.	carga máxima C [daN]
AKR-20x1,5.00.L	20	6	300	10
AKR-30x1,8.00.L	30	8	400	15
AKR-40x2,3.00.L	40	8	400	15
<b>Otras medidas a consultar!</b>				

- Tubo: termoplástico
- Cabezales: KTR-00/01 con eje de resorte



## Rodillo termoplástico con eje de resorte