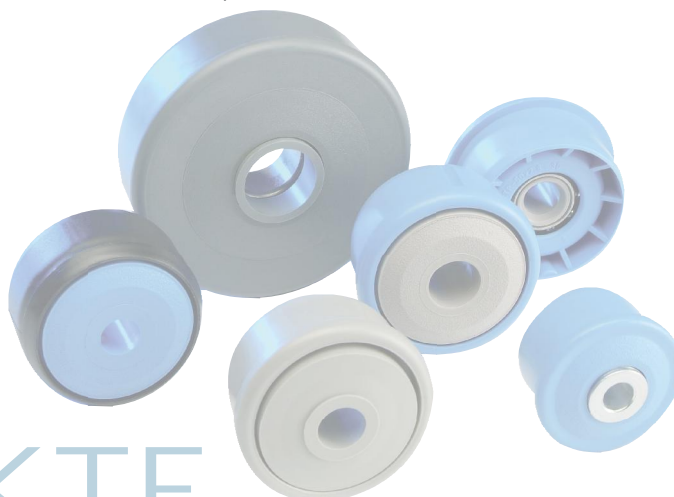


KTR-30			
Type	Di +0,2	Da	force portante C [daN]
KTR-50x1,5.30	47,3	49,9	80
KTR-50x2,8.30	44,6	49,9	80
KTR-60x1,5.30	57,3	59,9	80

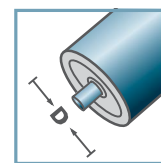
Des dimensions ultérieures sur demande!

- ☛ Boîtier: plastique
- ☛ Labyrinthe Simple: plastique
- ☛ Palier RL-30
 - ☛ Coquille de roulement: acier, trempée
 - ☛ Anneau de roulement intérieur: acier, trempé
 - ☛ Cage: plastique
 - ☛ Boule: acier

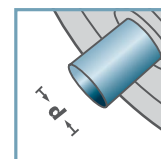
Attention! Les labyrinthes simples pour l'axe 15 mm sont fournis séparés et doivent être assemblés lors du montage.



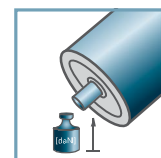
KTR-30



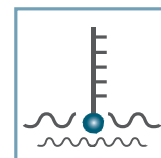
D [mm]
50 - 60



d [mm]
10; 12; 15; SW11



C [daN]
80



T [°C]
0° - 80°



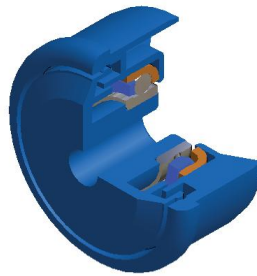
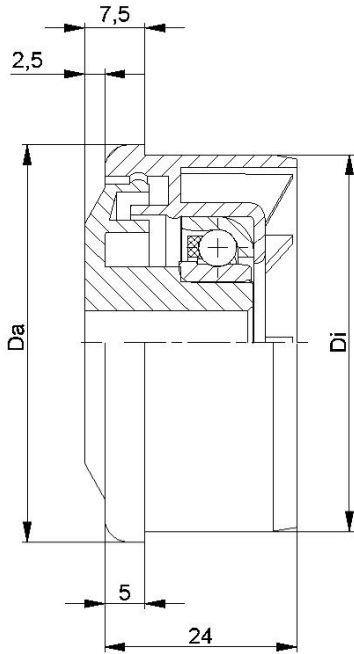
huile



Carton [pc.]

ø50: 250
ø60: 200

KTR/KTE

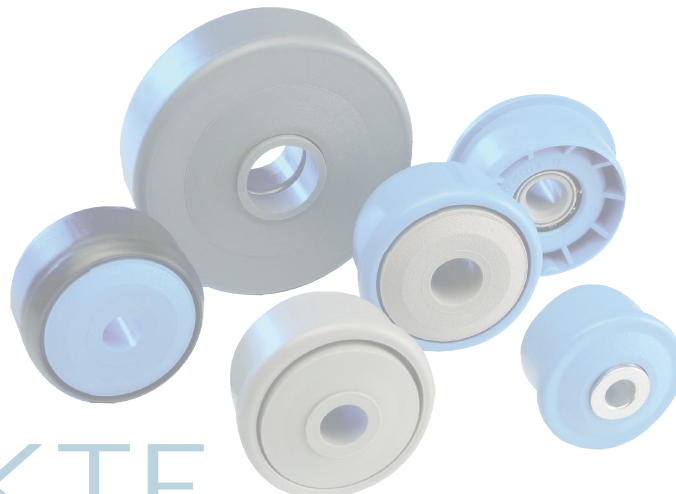


KTR-31			
Type	Di +0,2	Da	force portante C [daN]
KTR-50x1,5.31	47,3	49,9	25
KTR-50x2,8.31	44,6	49,9	25
KTR-60x1,5.31	57,3	59,9	25

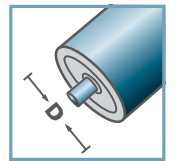
Des dimensions ultérieures sur demande!

- ☛ Boîtier: plastique
- ☛ Labyrinthe Simple: plastique
- ☛ Palier RL-31
 - ☛ Coquille de roulement: 1.4301
 - ☛ Anneau de roulement intérieur: 1.4305
 - ☛ Cage: plastique
 - ☛ Boule: 1.4301

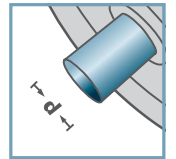
Attention! Les labyrinthes simples pour l'axe 15 mm sont fournis séparés et doivent être assemblés lors du montage.



KTR-31



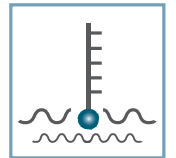
D [mm]
50 - 60



d [mm]
10; 12; 15; SW11



C [daN]
25



T [°C]
0° - 80°

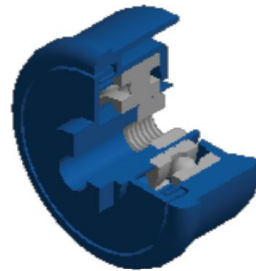
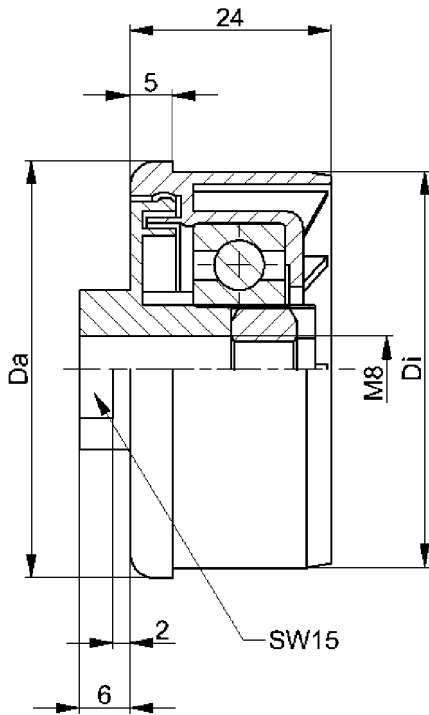


huile



Carton [pc.]
ø50: 250
ø60: 200

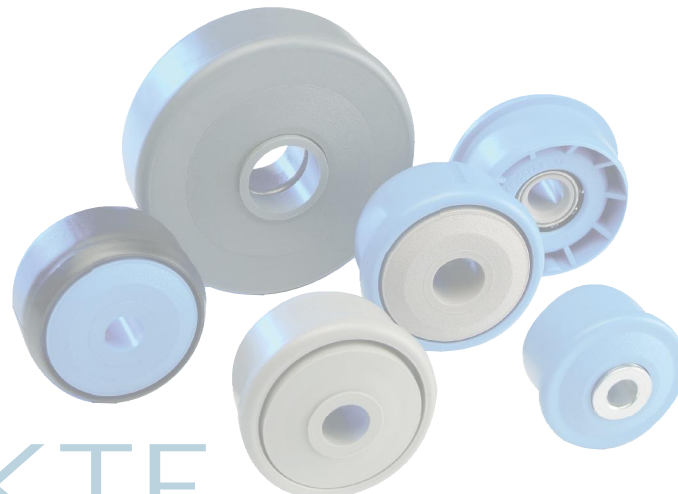
KTR/KTE



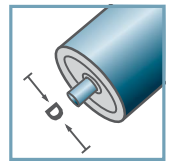
KTR-40.M8			
Type	Di +0,2	Da	force portante C [daN]
KTR-50x1,5.40	47,3	49,9	80

Des dimensions ultérieures sur demande!

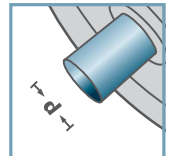
- Boitier: plastique
- Labyrinthe simple: plastique
- Palier 6202
- Écrou hexagonal



KTR-40.M8



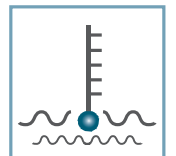
D [mm]
50



d [mm]
M8



C [daN]
80



T [°C]
0° - 80°

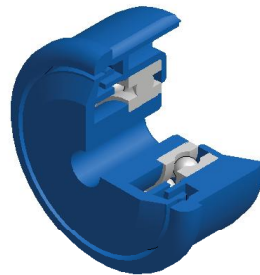
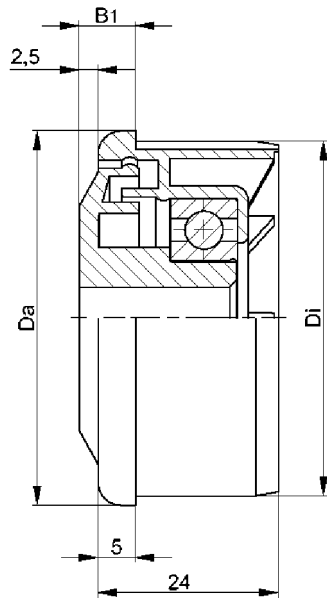


EP 2

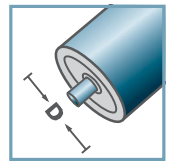


Carton [pc.]
ø50: 250

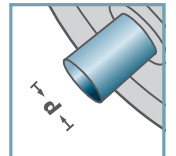
KTR/KTE



KTR-42



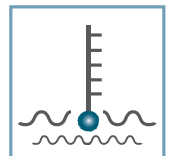
D [mm]
40 - 60



d [mm]
10; 12; 15; SW11



C [daN]
80; 120



T [°C]
0° - 80°



EP 2



Carton [pc.]

ø40: -
ø50: 250
ø60: 200

KTR-42				
Type	Di +0,25	Da	B1	force portante C [daN]
KTR-40x1,5.42	37,2	39,9	9,0	120
KTR-50x1,5.42	47,3	49,9	7,5	80
KTR-50x2,0.42	46,3	49,9	7,5	80
KTR-50x2,8.42	44,6	49,9	7,5	80
KTR-60x1,5.42	57,3	59,9	7,5	80
KTR-60x2,0.42	56,3	59,9	7,5	80

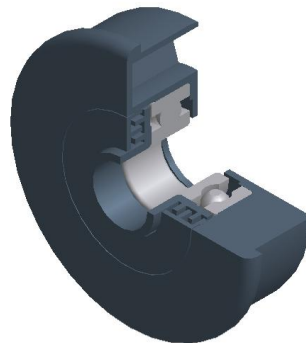
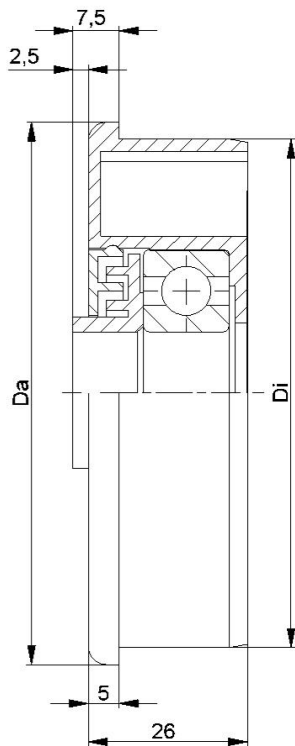
Des dimensions ultérieures sur demande!

- ☛ Boîtier: plastique
- ☛ Labyrinthe simple: plastique
- ☛ Palier 6002

Attention! Les labyrinthes simples pour l'axe 15 mm sont fournis séparés et doivent être assemblés lors du montage.



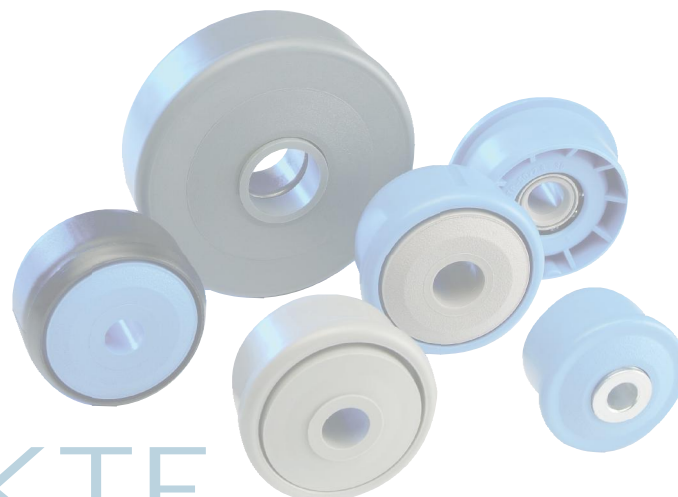
KTR/KTE



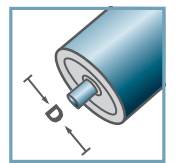
KTR-44			
Type	Di +0,2	Da	force portante C [daN]
KTR-89x3,0.44	83,3	88,9	150

Des dimensions ultérieures sur demande!

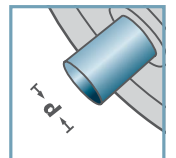
- Boitier: plastique
- Labyrinthe intérieur: plastique
- Labyrinthe extérieur: plastique
- Palier 6204



KTR-44



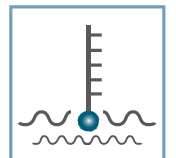
D [mm]
89



d [mm]
20



C [daN]
150



T [°C]
0° - 80°



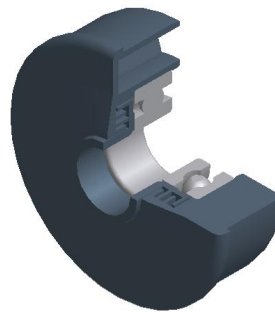
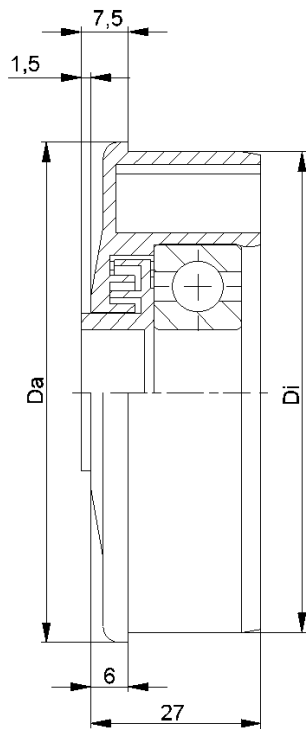
EP 2



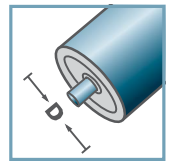
Carton [pc.]

80

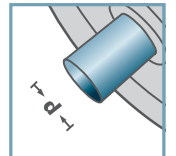
KTR/KTE



KTR-43/44



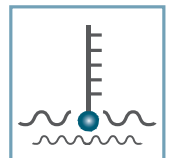
D [mm]
63,5 - 80



d [mm]
6303: 17
6204: 20



C [daN]
150



T [°C]
0° - 80°



EP 2



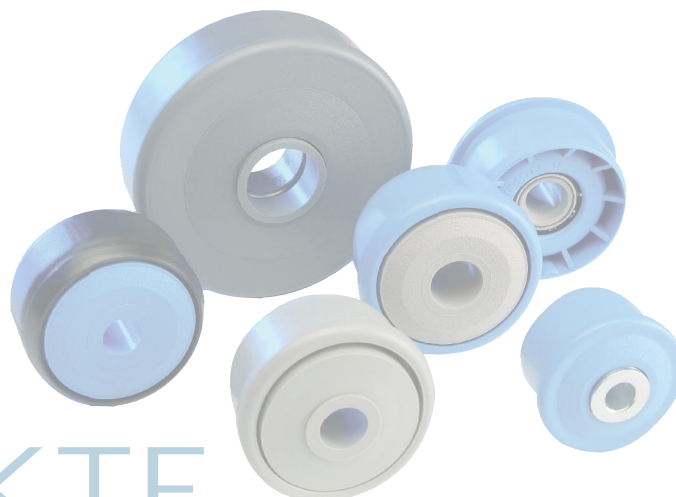
Carton [pc.]

100

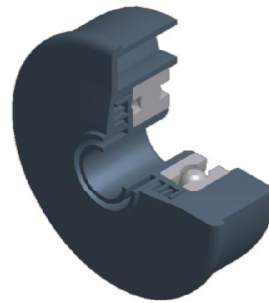
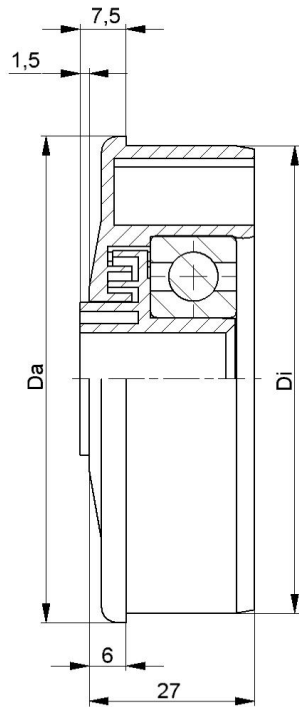
KTR-43/44			
Type	Di +0,2	Da	force portante C [daN]
KTR-63,5x2,9.43/.44	58,0	63,4	150
KTR-80x2,0.43/.44	76,4	79,9	150

Des dimensions ultérieures sur demande!

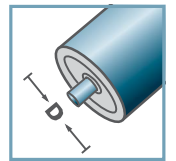
- ☛ Boitier: plastique
- ☛ Labyrinthe multiple: plastique
- ☛ Palier 6303/6204



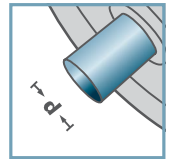
KTR/KTE



KTR-43/44



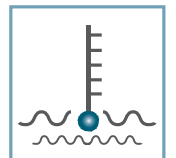
D [mm]
63,5 - 80



d [mm]
6303: 12
6204: 15



C [daN]
150



T [°C]
0° - 80°



EP 2



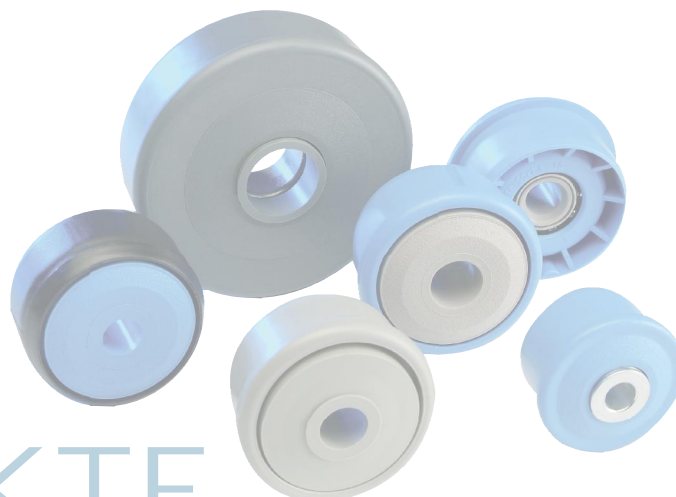
Carton [pc.]

100

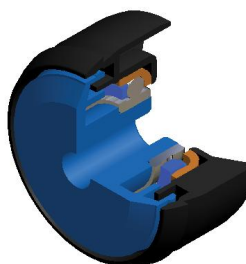
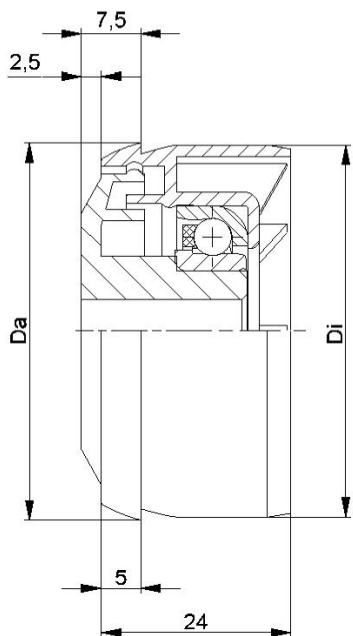
KTR-43/44			
Type	Di +0,2	Da	force portante C [daN]
KTR-63,5x2,9.43/.44	58,0	63,4	150
KTR-80x2,0.43/.44	76,4	79,9	150

Des dimensions ultérieures sur demande!

- ☛ Boitier: plastique
- ☛ Labyrinthe multiple: plastique
- ☛ Palier 6303/6204



KTR/KTE

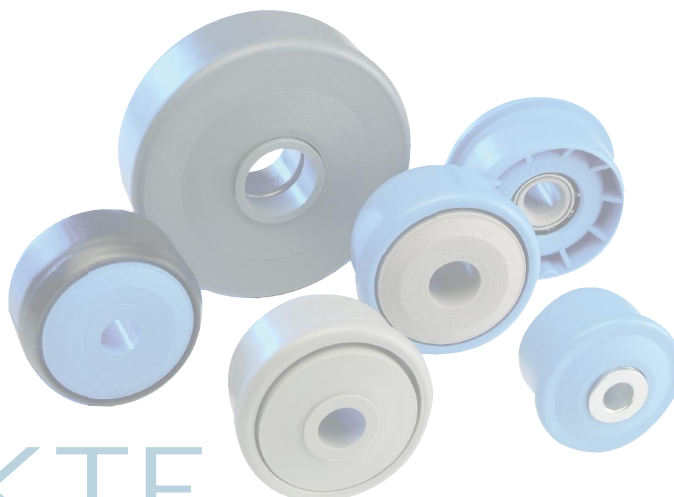


KTE-30			
Type	Di +0,3	Da	force portante C [daN]
KTE-50x1,5.30	47,1	47,9	80

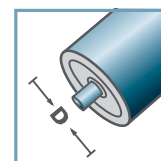
Des dimensions ultérieures sur demande!

- ☛ Boitier: plastique
- ☛ Labyrinthe simple: plastique
- ☛ Palier RL-30
 - ☛ Coquille de roulement: acier, trempée
 - ☛ Anneau de roulement intérieur: acier, trempé
 - ☛ Cage: plastique
 - ☛ Boule: acier

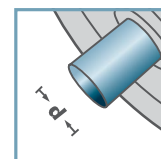
Attention! Les labyrinthes simples pour l'axe 15 mm sont fournis séparés et doivent être assemblés lors du montage.



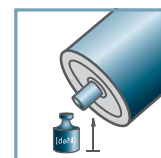
KTE-30



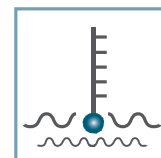
D [mm]
50



d [mm]
10; 12; 15; SW11



C [daN]
80



T [°C]
0° - 80°



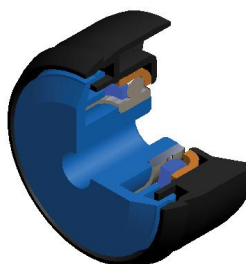
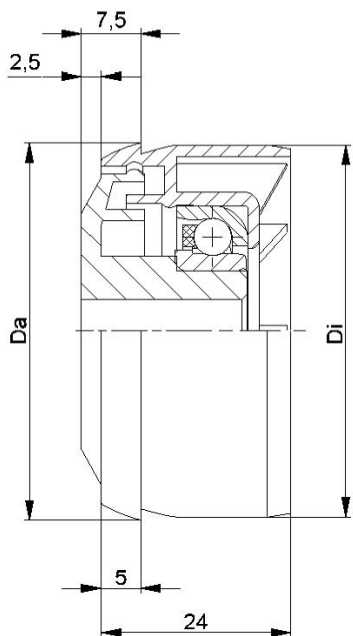
huile



Carton [pc.]

250

KTR/KTE

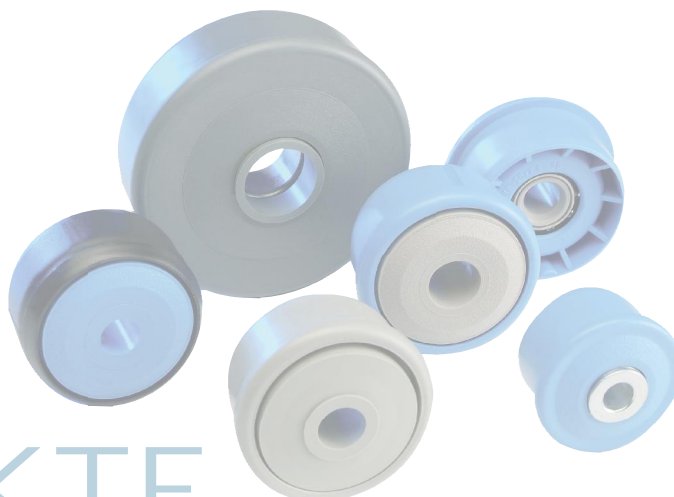


KTE-31			
Type	Di +0,3	Da	force portante C [daN]
KTE-50x1,5.31	47,1	47,9	25

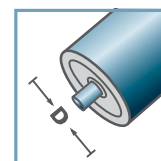
Des dimensions ultérieures sur demande!

- ☛ Boitier: plastique
- ☛ Labyrinthe simple: plastique
- ☛ Palier RL-31
 - ☛ Coquille de roulement: 1.4301
 - ☛ Anneau de roulement intérieur: 1.4305
 - ☛ Cage: plastique
 - ☛ Boule: 1.4301

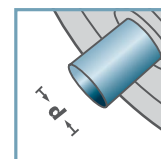
Attention! Les labyrinthes simples pour l'axe 15 mm sont fournis séparés et doivent être assemblés lors du montage.



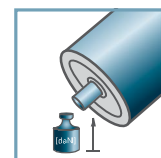
KTE-31



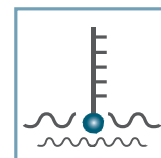
D [mm]
50



d [mm]
10; 12; 15; SW11



C [daN]
25



T [°C]
0° - 80°



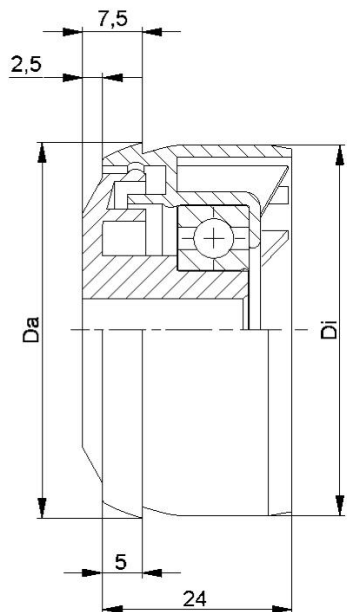
huile



Carton [pc.]

250

KTR/KTE

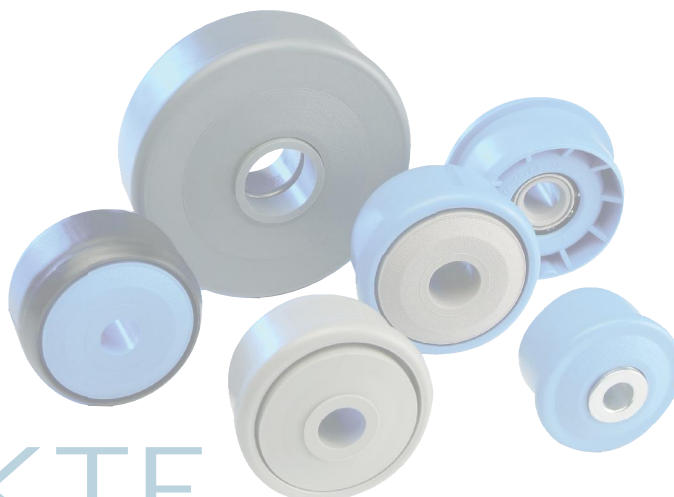


KTE-42			
Type	Di +0,3	Da	force portante C [daN]
KTE-50x1,5.42	47,1	47,9	80

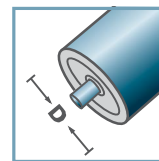
Des dimensions ultérieures sur demande!

- ☛ Boitier: plastique
- ☛ Labyrinthe simple: plastique
- ☛ Palier 6002

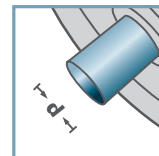
Attention! Les labyrinthes simples pour l'axe 15 mm sont fournis séparés et doivent être assemblés lors du montage.



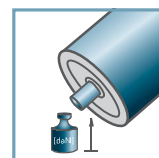
KTE-42



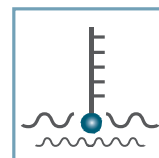
D [mm]
50



d [mm]
10; 12; 15; SW11



C [daN]
80



T [°C]
0° - 80°



EP 2



Carton [pc.]

250

KTR/KTE