

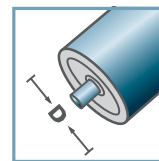
SLR	
Type	force portante C [daN]
SLR-480	20

Des dimensions ultérieures sur demande!

☛ Galets de roulements: acier

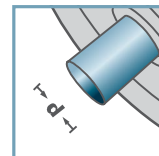


SLR-



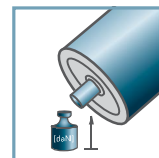
D [mm]

-



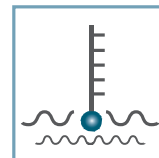
d [mm]

6; 8



C [daN]

20



T [°C]

-30° - 140°



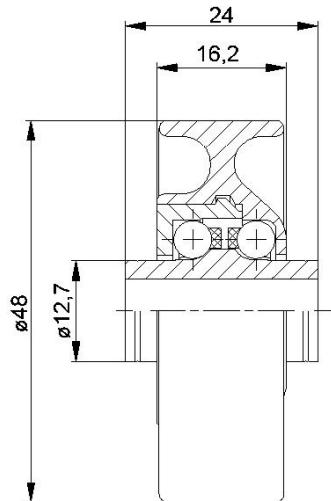
-



Carton [pc.]

250

KLR/SLR/SR



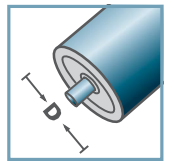
KLR-02/03			
Type	Normal	Inox	force portante C [daN]
KLR-480	x	x	15

Des dimensions ultérieures sur demande!

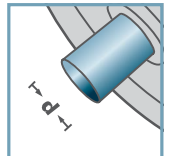
- ☛ Boitier: plastique
- ☛ Moyeu: plastique
- ☛ Couverture des roulements: plastique
- ☛ Cage: plastique
- ☛ Boule
  - ☛ 02: acier
  - ☛ 03: 1.4034



KLR-02  
KLR-03



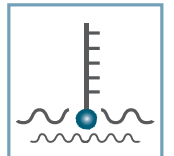
D [mm]  
-



d [mm]  
6; 8



C [daN]  
15



T [°C]  
0° - 80°



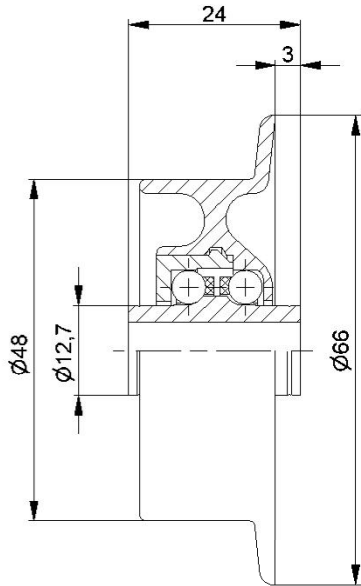
-



Carton [pc.]

250

KLR/SLR/SR



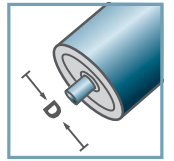
SR-02/03			
Type	Normal	Inox	force portante C [daN]
SR-480	x	x	10

Des dimensions ultérieures sur demande!

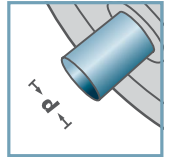
- ☛ Boitier: plastique
- ☛ Moyeu: plastique
- ☛ Couvercle des roulements: plastique
- ☛ Cage: plastique
- ☛ Boule
  - ☛ 02: acier
  - ☛ 03: 1.4034



SR-02  
SR-03



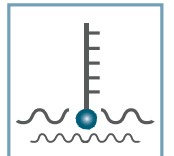
D [mm]  
-



d [mm]  
6; 8



C [daN]  
15



T [°C]  
0° - 80°



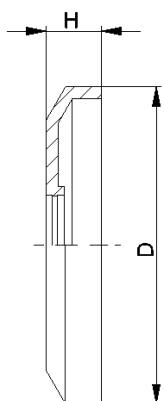
-



Carton [pc.]

250

KLR/SLR/SR



DK-KLR		
Type	D	H
DK-KLR-02	40,5	7

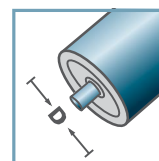
Des dimensions ultérieures sur demande!

Capot d'étanchéité: plastique



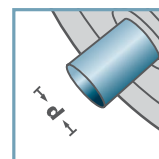
KLR/SLR/SR

DK-KLR-02



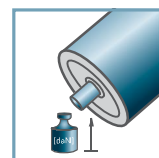
D [mm]

-



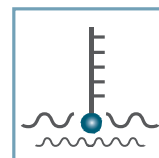
d [mm]

-



C [daN]

-



T [°C]

0° - 80°



-



Carton [pc.]

