

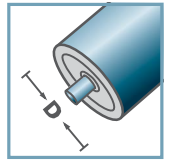
KKR-1/2" x5/16" -Z14

Des dimensions ultérieurs sur demande!

Boitier: plastique

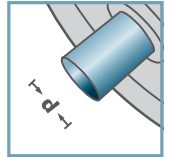


KKR-40



D [mm]

-



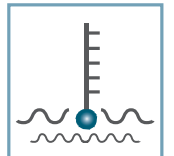
d [mm]

-



C [daN]

-



T [°C]

0° - 80°



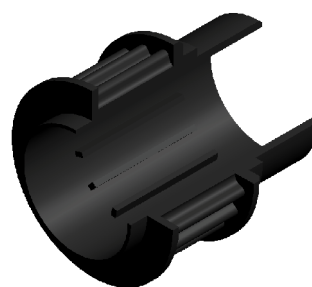
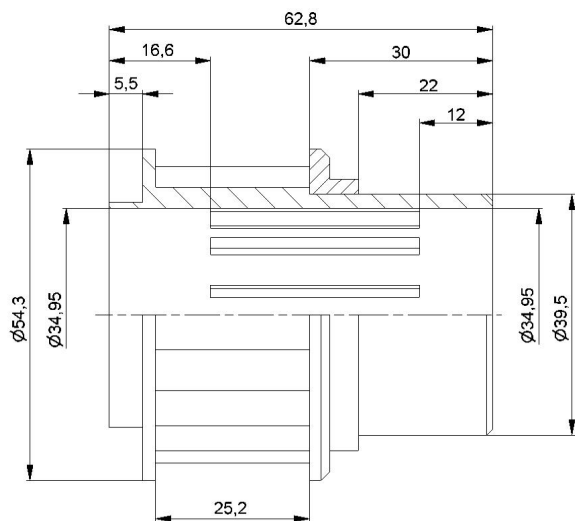
-



Carton [pc.]

500

Embout entraine par pignon



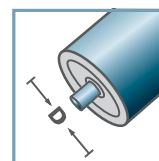
KZA-Z20.40

Des dimensions ultérieurs sur demande!

Boîtier: plastique

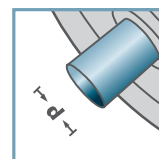


KZA-40



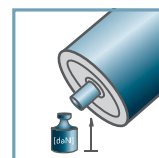
D [mm]

-



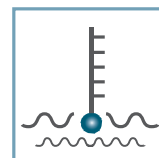
d [mm]

-



C [daN]

-



T [°C]

0° - 80°



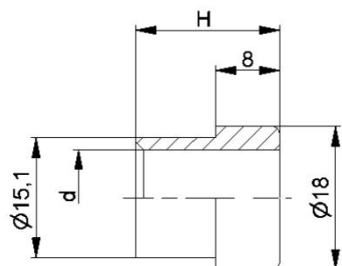
-



Carton [pc.]

140

Entraînements par courroie crantée



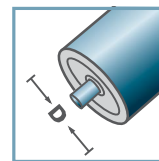
| KKR-40 | | |
|--------|------|----|
| | d | H |
| KKR-40 | 10 | 19 |
| KKR-40 | 12 | 18 |
| KKR-40 | 14 | 19 |
| KKR-40 | SW11 | 19 |

Des dimensions ultérieures sur demande!

 Douille de réduction: plastique

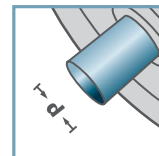


KKR-40



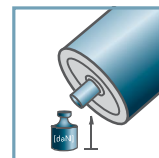
D [mm]

-



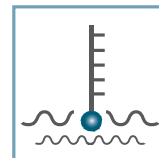
d [mm]

10; 12; 14; SW11



C [daN]

-



T [°C]

0° - 80°



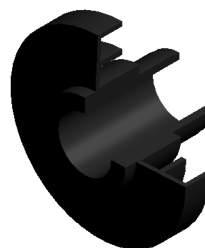
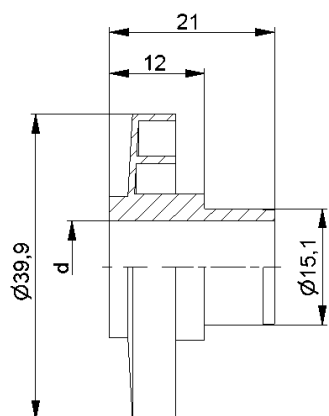
-



Carton [pc.]

500/8000

Douille de réduction



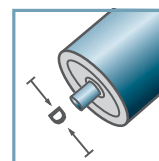
| KKR-40 | |
|--------|------|
| Typ | d |
| KKR-40 | 10 |
| KKR-40 | 12 |
| KKR-40 | 14 |
| KKR-40 | SW11 |

Des dimensions ultérieurs sur demande!

 Labyrinthe: plastique

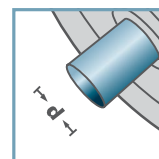


KKR-40



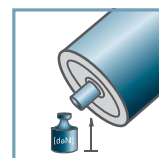
D [mm]

-



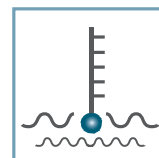
d [mm]

10; 12; 14; SW11



C [daN]

-



T [°C]

0° - 80°



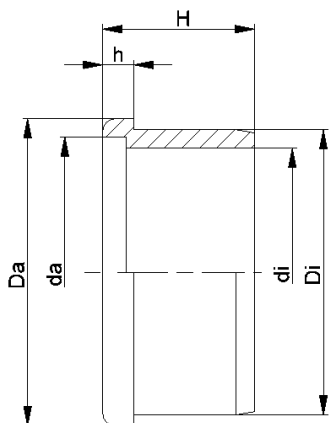
-



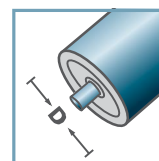
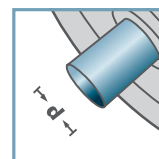
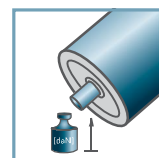
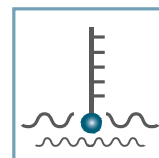
Carton [pc.]

200/1000

Labyrinthe



KKR-40

D [mm]
50 - 60d [mm]
-C [daN]
-T [°C]
0° - 80°

-



Carton [pc.]

ø50: 400
ø60: 250

KKR-40

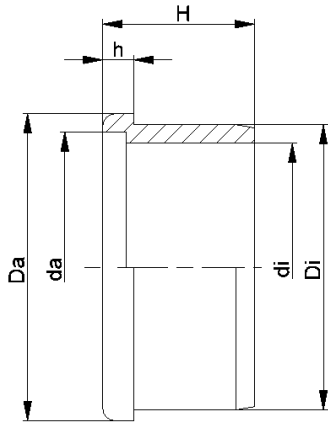
| Typ | Di | Da | di | da | H | h |
|--------|-------|----|------|------|------|---|
| 50x1,5 | 47,25 | 50 | 39,3 | 42,6 | 25,2 | 5 |
| 50x2,8 | 44,7 | 50 | 39,3 | 42,6 | 25,2 | 5 |
| 60x1,5 | 57,3 | 60 | 47,0 | 50,7 | 25,5 | 5 |
| 60x2,0 | 56,3 | 60 | 47,0 | 50,7 | 25,5 | 5 |

Des dimensions ultérieures sur demande!

 Anneau de glissement: plastique



Anneau de glissement fixe



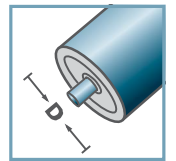
| KKR-40 | | | | | | |
|--------|------|----|------|------|----|---|
| Typ | Di | Da | di | da | H | h |
| 50x1,5 | 47,2 | 50 | 40,6 | 44,6 | 25 | 5 |

Des dimensions ultérieures sur demande!

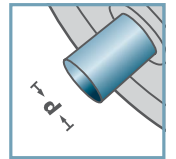
🔧 Anneau de glissement: plastique



KKR-40



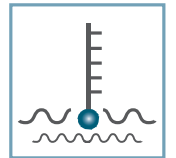
D [mm]
50 - 60



d [mm]
-



C [daN]
-



T [°C]
0° - 80°



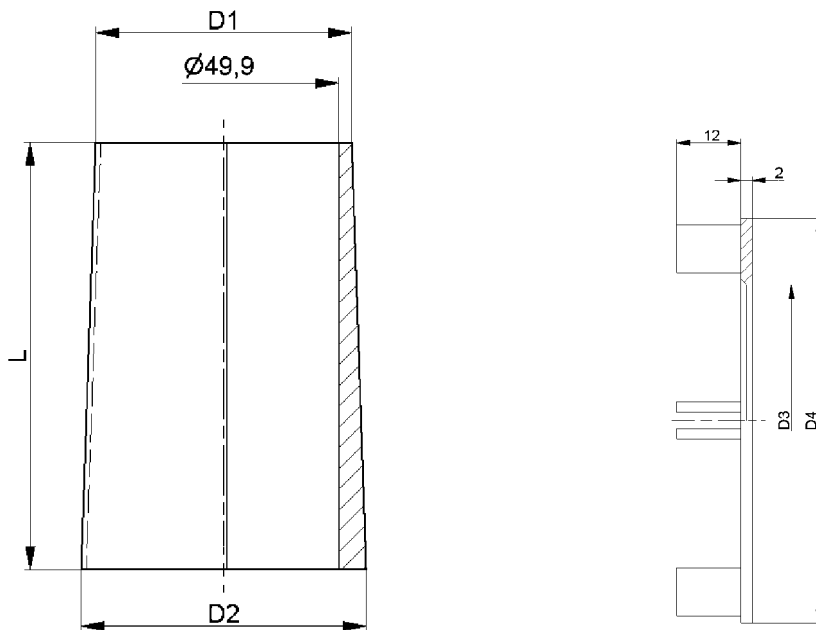
-



Carton [pc.]

400

Anneau de glissement



KF-50

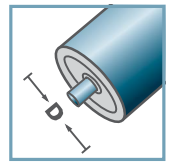
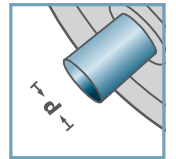
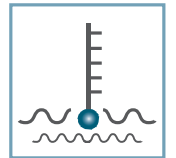
| Type A | D1 | D2 | L | D3 | D4 |
|-------------------|-------|-------|-------|------|------|
| KF-50 I-a Type A | 53,4 | 59,7 | 92,5 | - | - |
| KF-50 I-b Type A | 54,0 | 59,7 | 95,5 | - | - |
| KF-50 II Type A | 60,0 | 66,5 | 100,0 | - | - |
| KF-50 III Type A | 66,5 | 73,0 | 99,0 | - | - |
| KF-50 IV Type A | 73,5 | 80,0 | 100,0 | 50,6 | 75,5 |
| KF-50 V Type A | 80,0 | 86,5 | 99,5 | 50,7 | 81,7 |
| KF-50 VI Type A | 86,5 | 93,5 | 100,0 | 50,6 | 87,7 |
| KF-50 VII Type A | 93,5 | 100,0 | 100,0 | 50,6 | 94,3 |
| KF-50 VIII Type A | 100,0 | 106,5 | 95,5 | - | - |
| KF-50 IX Type A | 106,5 | 113,0 | 95,5 | - | - |
| KF-50 X Type A | 113,0 | 119,5 | 95,5 | - | - |

Des dimensions ultérieures sur demande!

- 🔧 Rouleau conique: plastique
- 🔧 Chapeau terminal: plastique



KF-50

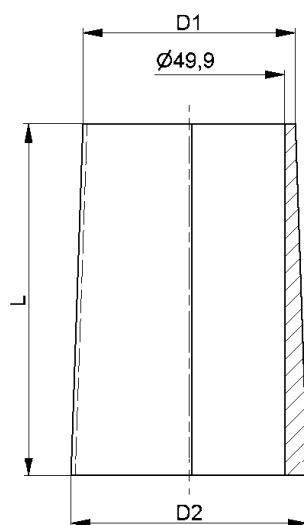
D [mm]
50d [mm]
-C [daN]
-T [°C]
0° - 80°

-



Carton [pc.]

Rouleau Conique



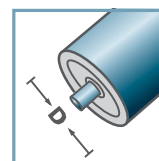
| KF-50 | | | |
|-------------------|-------|-------|-------|
| Type | D1 | D2 | L |
| KF-50 I Type B | 54,0 | 59,9 | 90,0 |
| KF-50 II Type B | 59,9 | 66,6 | 100,0 |
| KF-50 III Type B | 66,6 | 73,4 | 100,0 |
| KF-50 IV Type B | 73,4 | 80,1 | 100,0 |
| KF-50 V Type B | 80,1 | 86,9 | 100,0 |
| KF-50 VI Type B | 86,9 | 93,6 | 100,0 |
| KF-50 VII Type B | 93,6 | 100,4 | 100,0 |
| KF-50 VIII Type B | 100,4 | 107,1 | 100,0 |
| KF-50 IX Type B | 107,1 | 113,9 | 100,0 |
| KF-50 X Type B | 113,9 | 120,9 | 100,0 |

Des dimensions ultérieurs sur demande!

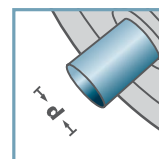
- Rouleau conique: plastique
- Chapeau terminal: plastique



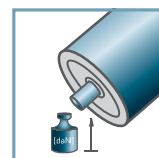
KF-50



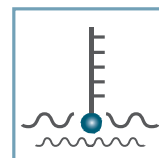
D [mm]
50



d [mm]
-



C [daN]
-



T [°C]
0° - 80°

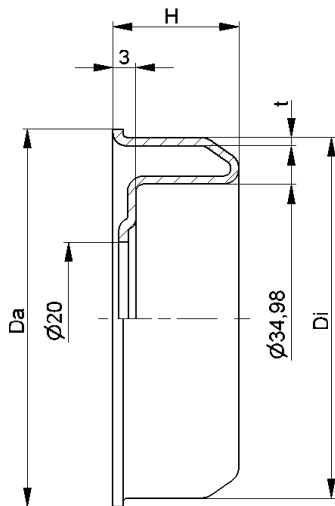


-

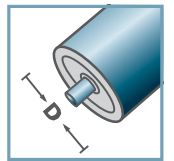


Carton [pc.]

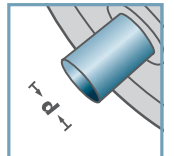
Rouleau Conique



MRK-40



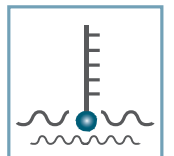
D [mm]
50 - 60



d [mm]
15



C [daN]
-



T [°C]
-



6202:
D35; d15; H11



Carton [pc.]

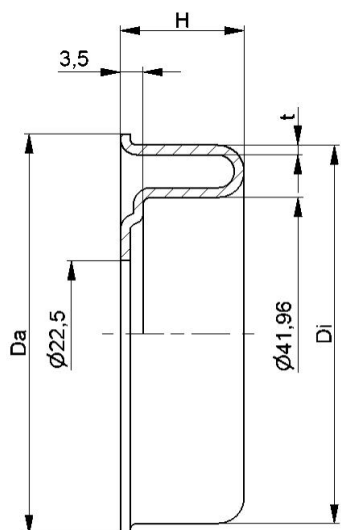
| MRK-40 | | | | |
|---------------|---------|------|------|-----|
| Type | Di ±0,1 | Da | H | t |
| MRK-50x1,5.40 | 47,3 | 49,5 | 16 | 1,2 |
| MRK-50x2,0.40 | 46,3 | 49,5 | 16 | 1,2 |
| MRK-60x2,0.40 | 56,3 | 59,5 | 16,5 | 1,5 |
| MRK-60x3,0.40 | 54,3 | 59,5 | 16,5 | 1,5 |

Des dimensions ultérieures sur demande!

☛ Boîtier: acier, zingué




Boîtier acier



MRK-6004

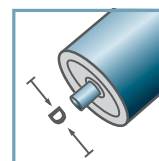
| Type | Di $\pm 0,1$ | Da | H | t |
|-------------------|--------------|------|------|-----|
| MRK-63,5x2,9/6004 | 58,1 | 61,5 | 19,0 | 1,5 |

Des dimensions ultérieurs sur demande!

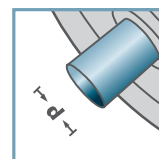
 Boîtier: acier, zingué



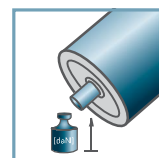
MRK-6004



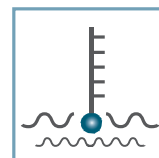
D [mm]
63,5



d [mm]
20



C [daN]
-



T [°C]
-

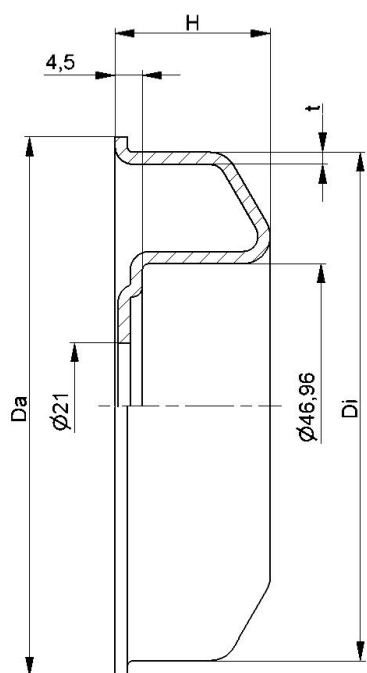


6004:
D42; d20; H12



Carton [pc.]

Boîtier acier



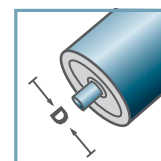
| MRK-6204 | | | | |
|-------------------|--------------|-------|------|-----|
| Type | Di $\pm 0,1$ | Da | H | t |
| MRK-80x2,0/6204 | 76,5 | 79,5 | 23,5 | 2,0 |
| MRK-80x3,0/6204 | 74,5 | 79,5 | 23,5 | 2,0 |
| MRK-89x3,0/6204 | 83,5 | 88,5 | 23,5 | 2,0 |
| MRK-89x3,25/6204 | 83,0 | 88,5 | 23,5 | 2,0 |
| MRK-108x3,25/6204 | 102,0 | 107,5 | 25,0 | 2,0 |

Des dimensions ultérieures sur demande!

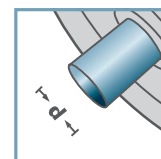
C Boîtier: acier, zingué



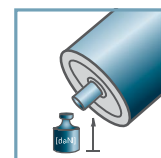
MRK-6204



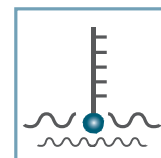
D [mm]
80 - 108



d [mm]
20



C [daN]
-



T [°C]
-

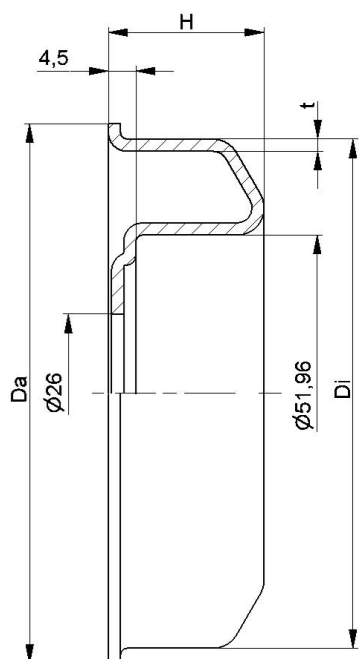


6204:
D47; d20; H14

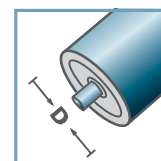
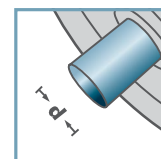
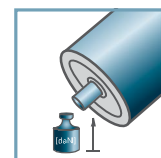
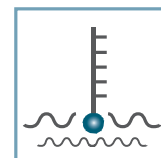


Carton [pc.]

Boîtier acier



MRK-6205

D [mm]
80 - 108d [mm]
25C [daN]
-T [°C]
-6205:
D52; d25; H15

Carton [pc.]

MRK-6205

| Type | Di $\pm 0,1$ | Da | H | t |
|-------------------|--------------|-------|------|-----|
| MRK-80x3,0/6205 | 74,5 | 79,5 | 23,5 | 2,0 |
| MRK-89x3,0/6205 | 83,5 | 88,5 | 24,5 | 2,0 |
| MRK-108x3,25/6205 | 102,0 | 107,5 | 25,5 | 2,0 |

Des dimensions ultérieurs sur demande!

Boîtier: acier, zingué



Boîtier acier