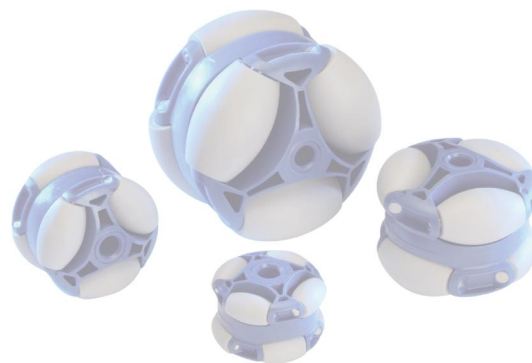


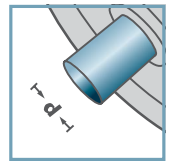
ASR-			
Type	D	B	force portante C [daN]
ASR-80	80	64	40

Des dimensions ultérieures sur demande!

- ☛ Boîtier: plastique
- ☛ Barillet à rouleaux: plastique
- ☛ Axe: 1.4301



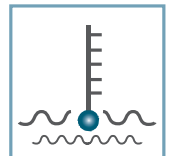
ASR-



d [mm]
8; 12; 15; SW14



C [daN]
40



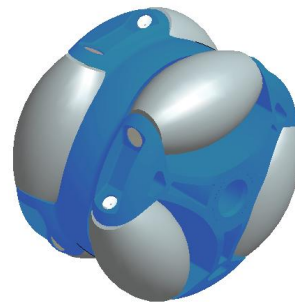
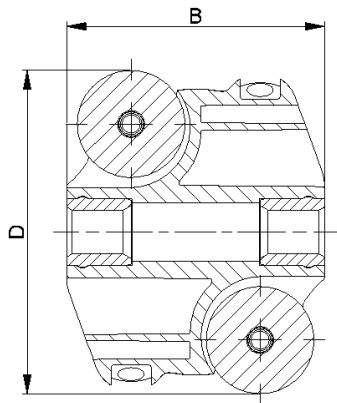
T [°C]
0° - 80°



Carton [pc.]

50

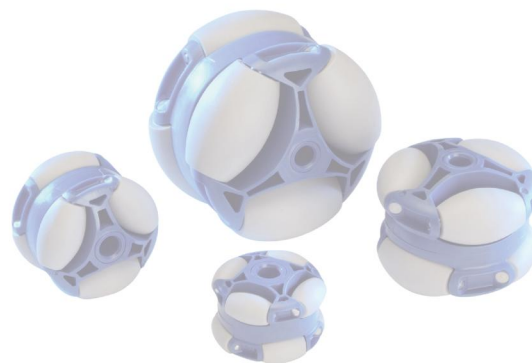
Roulement polydirectionnel



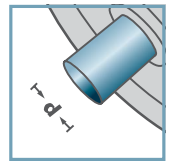
ASR-			
Type	D	B	force portante C [daN]
ASR-60	60	48	20
ASR-48	48	39	15
ASR-40	40	29	10

Des dimensions ultérieures sur demande!

- ☛ Boîtier: plastique
- ☛ Barillet à rouleaux: plastique
- ☛ Axe: 1.4301



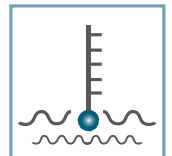
ASR-



d [mm]
8; 10; SW9



C [daN]
10 - 20



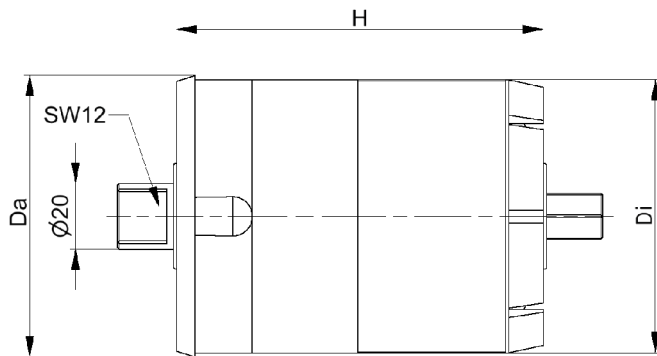
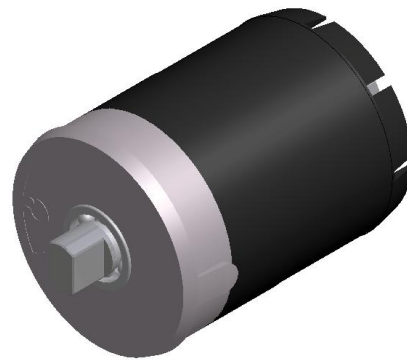
T [°C]
0° - 80°



Carton [pc.]

50

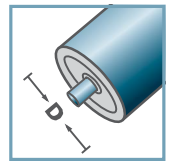
Roulement polydirectionnel



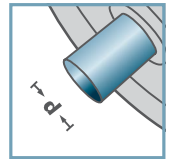
BR-89x3,0-				
Type	Da	Di	H	force portante [kg]
200	88,5	83	115	200
500	88,5	83	115	500
800	88,5	83	115	800
1200	88,5	83	115	1200



BR-



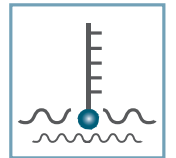
D [mm]
89



d [mm]
20



C [daN]
250



T [°C]
0° - 80°



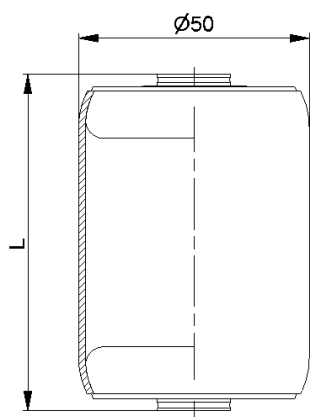
EP2



Carton [pc.]

20

Rouleaux de frein



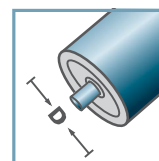
AMR-50x1,5.20		
Type	L	force portante C [daN]
AMR-50x1,5.20-66	66	160
AMR-50x1,5.20-73	73	160
AMR-50x1,5.20-80	80	160
AMR-50x1,5.20-100	100	160

Des dimensions ultérieures sur demande!

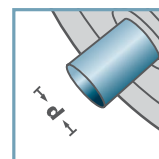
- ☛ Tube: acier, zingué
- ☛ Rouleaux embouts Métalliques MTR-20



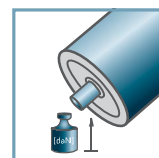
AMR-50.20



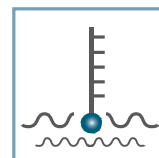
D [mm]
50



d [mm]
8; 10; 12; SW11



C [daN]
160



T [°C]
0° - 100°

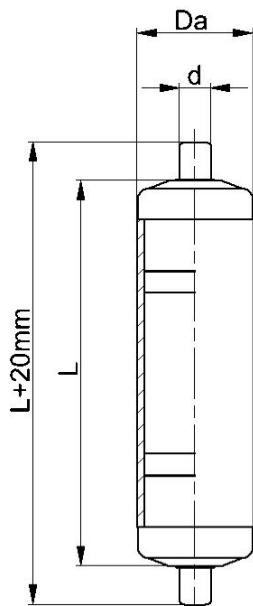


huile

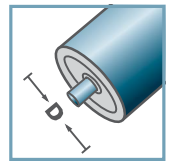


Carton [pc.]

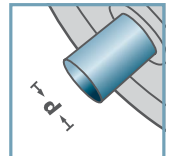
Rouleaux métalliques



AKR-00/01



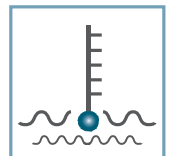
D [mm]
20; 30; 40



d [mm]
6; 8



C [daN]
10; 15



T [°C]
0° - 80°



AKR-00/01				
Type	D	d	L max.	force portante C [daN]
AKR-20x1,5.00.L	20	6	300	10
AKR-30x1,8.00.L	30	8	400	15
AKR-40x2,3.00.L	40	8	400	15
Des dimensions ultérieures sur demande!				

- Tube: plastique
- Rouleaux embouts plastiques KTR-00/01 avec axe de ressort



Carton [pc.]

Rouleaux plastiques avec axe de ressort