

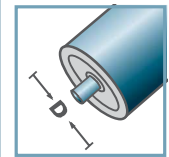
KLH-6204			
Type	Di	H	D
KLH-89x3,0/6204	83,2	36,5	85,3
KLH-108x3,0/6204	102,2	36,5	104,3

Other dimensions on request!

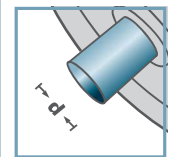
🔩 Retainer for Standard Bearings: Plastic



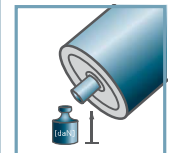
KLH-6204



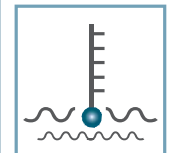
D [mm]
89 - 108



d [mm]
20



C [daN]
-



T [°C]
100°

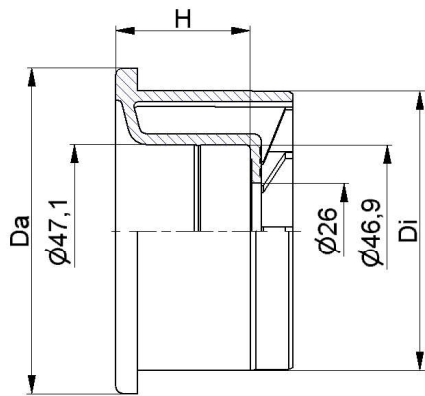


6204:
D47, d20, H14



Skeleton
Container [pcs.]
1000

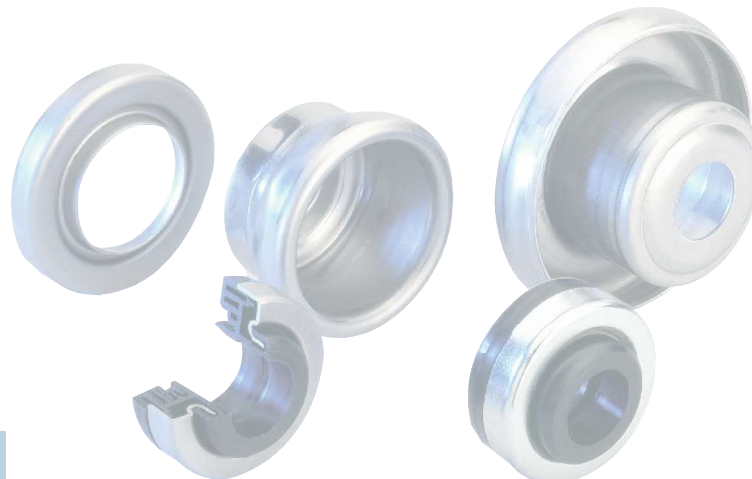
LH/FL



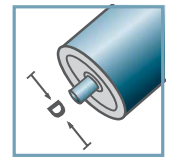
KLH-6204			
Type	Da	Di	H
KLH-90x7,0/6204	88,8	76,3	36,5

Other dimensions on request!

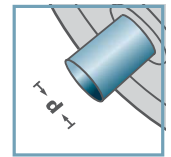
🔩 Retainer for Standard Bearings: Plastic



KLH-6204



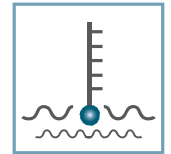
D [mm]
90



d [mm]
20



C [daN]
-



T [°C]
100°



6204:
D47, d20, H14



Skeleton
Container [pcs.]
1000

LH/FL