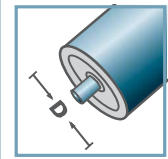
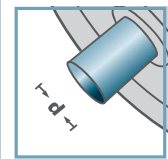


LH-6306



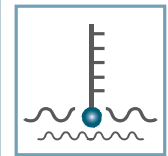
D [mm]
108 - 159



d [mm]
30



C [daN]
-



T [°C]
-



6306:
D72, d30, H19

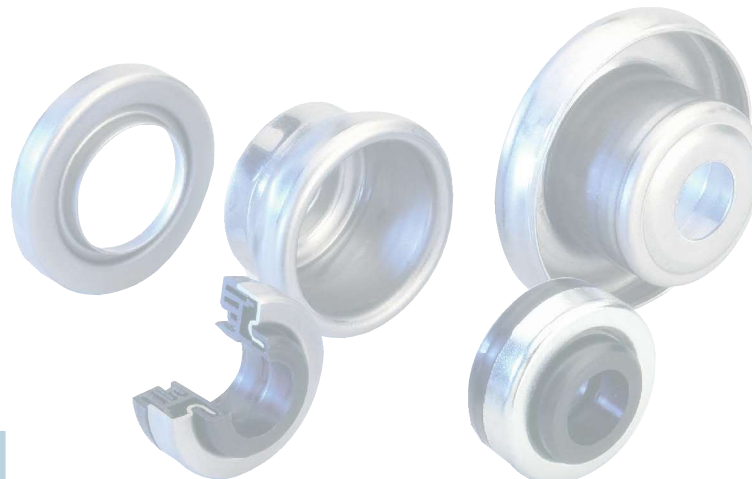


Skeleton
Container [pcs.]
ø108: 1700
ø133: 1000

LH-6306				
Type	Di	H	dL	t
LH-108x3,25/6306	102,1	42	36,5	3,0
LH-133x3,6/6306	126,3	42	36,5	3,5
LH-159x4,5/6306	150,5	42	36,5	2,5

Other dimensions on request!

Retainer for Standard Bearings: Steel



LH/FL