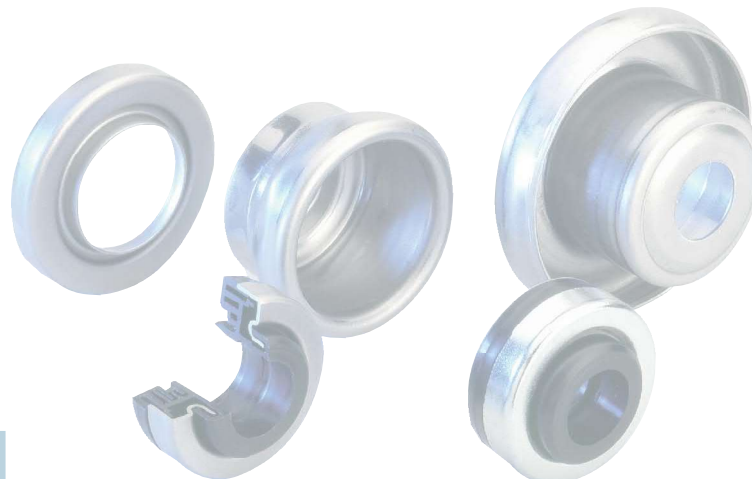


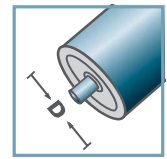
LH-6308			
Type	Di	H	t
LH-133x3,6/6308	126,3	44,6	4,0
LH-159x4,5/6308	150,8	44,6	4,0

Other dimensions on request!

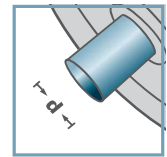
Retainer for Standard Bearings: Steel



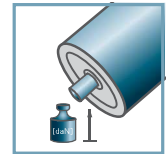
LH-6308



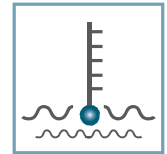
D [mm]  
133 - 159



d [mm]  
40



C [daN]  
-



T [°C]  
-



6308:  
D90, d40, H23



Skeleton  
Container [pcs.]  
ø133: 800  
ø159: 600

LH/FL