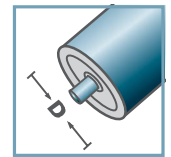
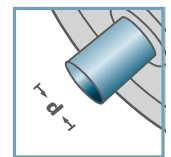


LH-6204



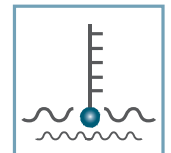
D [mm]
63,5 - 133



d [mm]
20



C [daN]
-



T [°C]
-

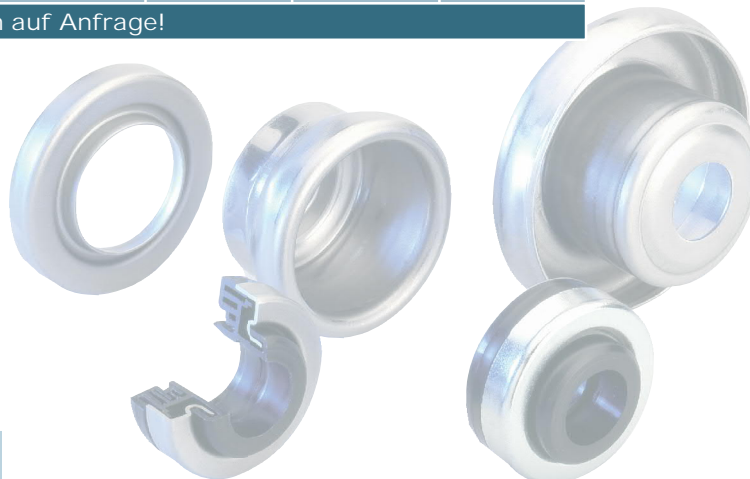


6204:
D47, d20, H14

LH-6204				
Typ	Di	H	dL	t
LH-63,5x1,75/6204	60,5	33	26	1,5
LH-63,5x2,9/6204	58,2	33	26	1,5
LH-80x2,0/6204	76,5	36,5	26	2,0
LH-80x3,0/6204	74,5	36,5	26	2,0
LH-89x3,0/6204	83,5	36,5	26	2,0
LH-108x2,5/6204	103,3	36,5	26	2,0
LH-108x2,9/6204	102,8	36,5	26	2,0
LH-108x3,25/6204	102,1	36,5	26	2,0
LH-133x3,6/6204	126,3	36,5	26	2,5

Weitere Varianten auf Anfrage!

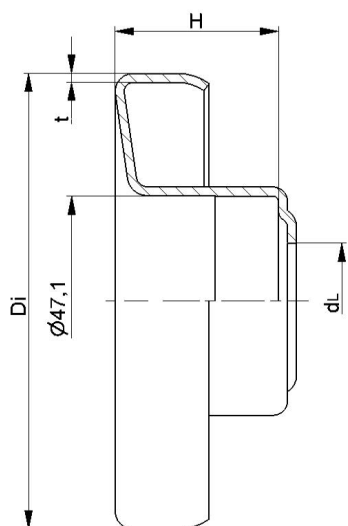
🔩 Lagerhalter: Stahl



Gitterbox [Stck.]

ø63,5: 6000
ø80: 3500
ø89: 3100
ø108: 2000
ø133: 1150

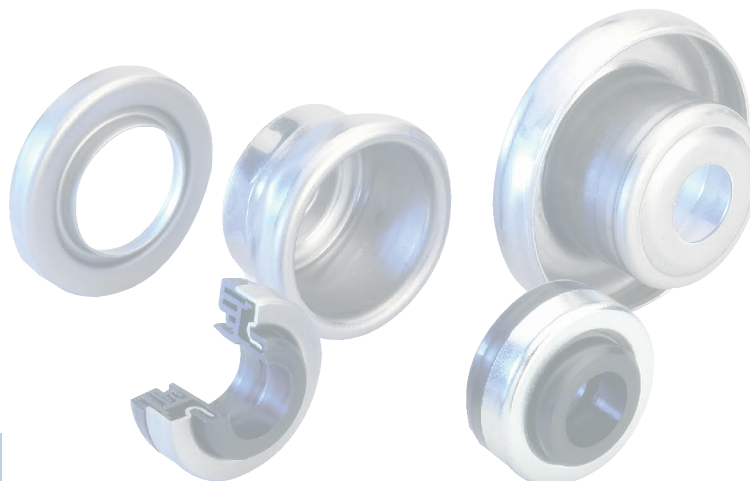
LH/FL



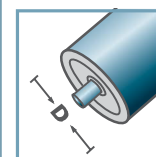
LH-6204 N				
Typ	Di	H	dL	t
LH-63,5x1,75/6204N	60,5	31,8	21	1,5
LH-89x3,0/6204N *	83,7	33,5	21	1,5
LH-108x3,25/6204N	102,1	36,5	21	2,0

Weitere Varianten auf Anfrage!

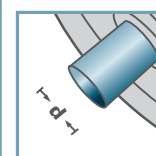
- ☛ Lagerhalter: Stahl
- ☛ *Alternativ: Niro



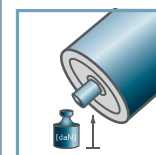
LH-6204 N



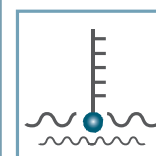
D [mm]
63,5 - 108



d [mm]
20



C [daN]
-



T [°C]
-



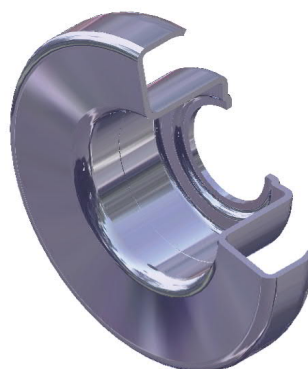
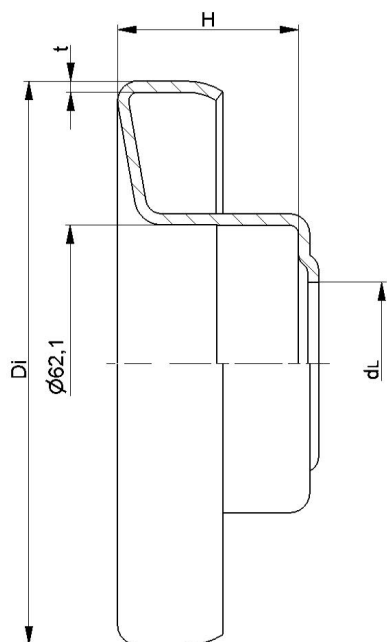
6204:
D47, d20, H14



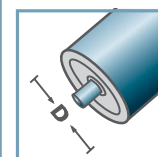
Gitterbox [Stck.]

ø63,5: 6000
ø89: 3100/3350
ø108: 2000

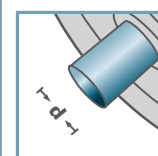
LH/FL



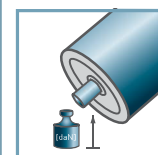
LH-6305



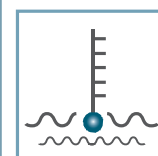
D [mm]
89 - 159



d [mm]
25



C [daN]
-



T [°C]
-



6305:
D62, d25, H17



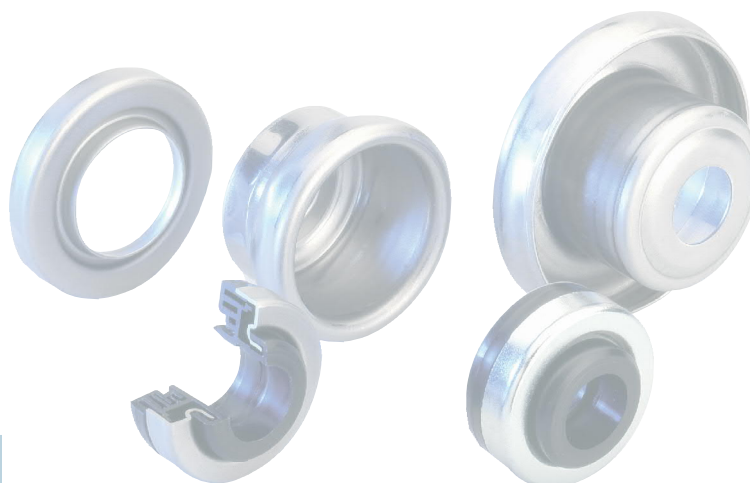
Gitterbox [Stck.]

ø89: 2600
ø108: 1900
ø133: 1150

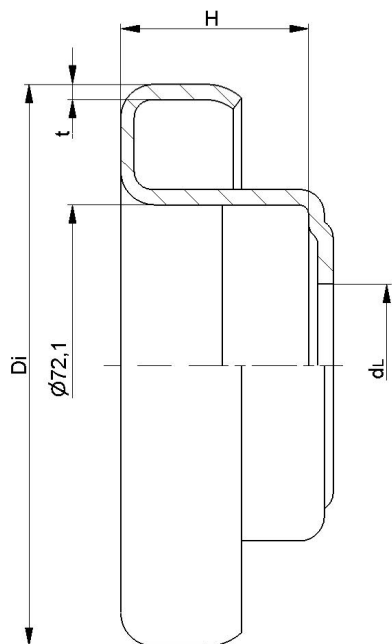
LH-6305				
Typ	Di	H	dL	t
LH-89x3,0/6305	83,5	40,5	36,5	2,0
LH-108x2,5/6305	103,3	40,5	36,5	2,0
LH-108x3,25/6305	102,1	40,5	36,5	2,0
LH-127x2,9/6305	121,7	40,5	36,5	2,5
LH-133x3,6/6305	126,3	40,5	36,5	2,5
LH-159x4,5/6305	150,5	40,5	36,5	2,5

Weitere Varianten auf Anfrage!

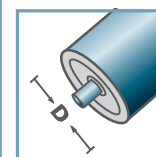
🔩 Lagerhalter: Stahl



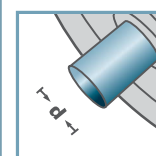
LH/FL



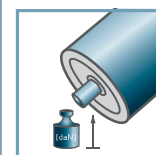
LH-6306



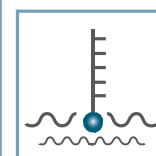
D [mm]
108 - 159



d [mm]
30



C [daN]
-



T [°C]
-



6306:
D72, d30, H19



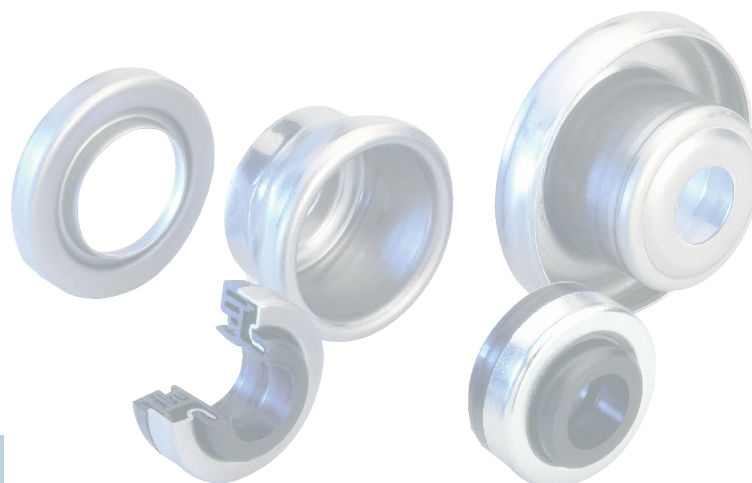
Gitterbox [Stck.]

ø108: 1700
ø133: 1000

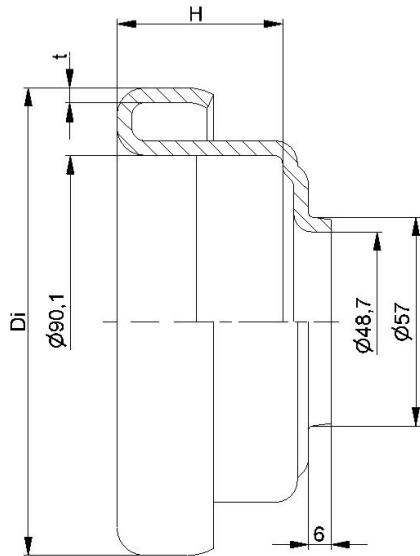
LH-6306				
Typ	Di	H	dL	t
LH-108x3,25/6306	102,1	42	36,5	3,0
LH-133x3,6/6306	126,3	42	36,5	3,5
LH-159x4,5/6306	150,5	42	36,5	2,5

Weitere Varianten auf Anfrage!

Lagerhalter: Stahl



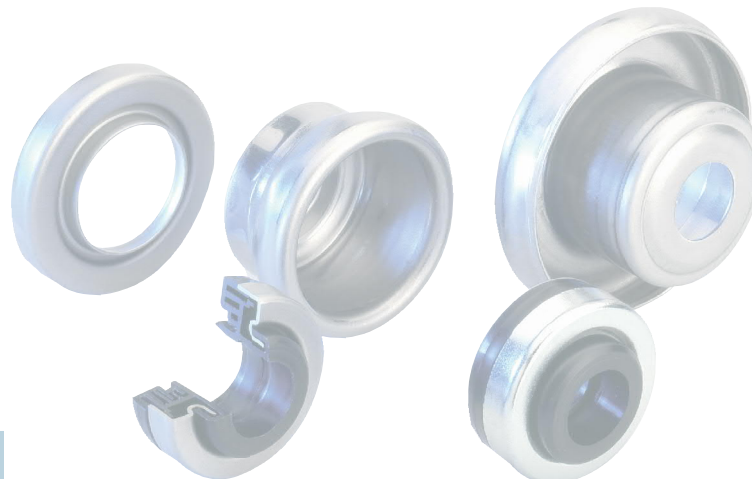
LH/FL



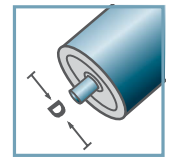
LH-6308			
Typ	Di	H	t
LH-133x3,6/6308	126,3	44,6	4,0
LH-159x4,5/6308	150,8	44,6	4,0

Weitere Varianten auf Anfrage!

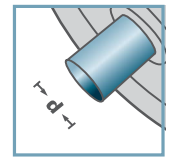
Lagerhalter: Stahl



LH-6308



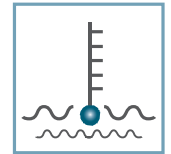
D [mm]
133 - 159



d [mm]
40



C [daN]
-



T [°C]
-



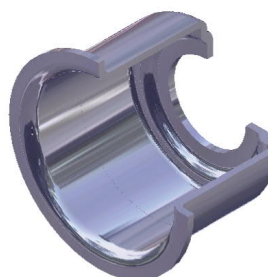
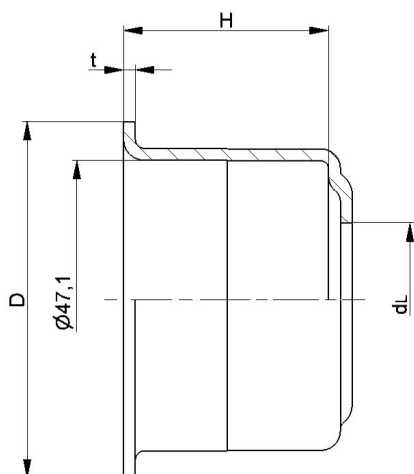
6308:
D90, d40, H23



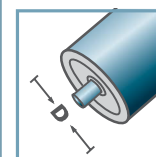
Gitterbox [Stck.]

ø133: 800
ø159: 600

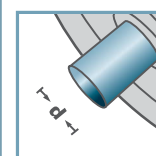
LH/FL



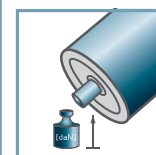
FL-6204



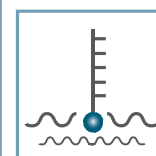
D [mm]
60 - 108



d [mm]
20



C [daN]
-



T [°C]
-

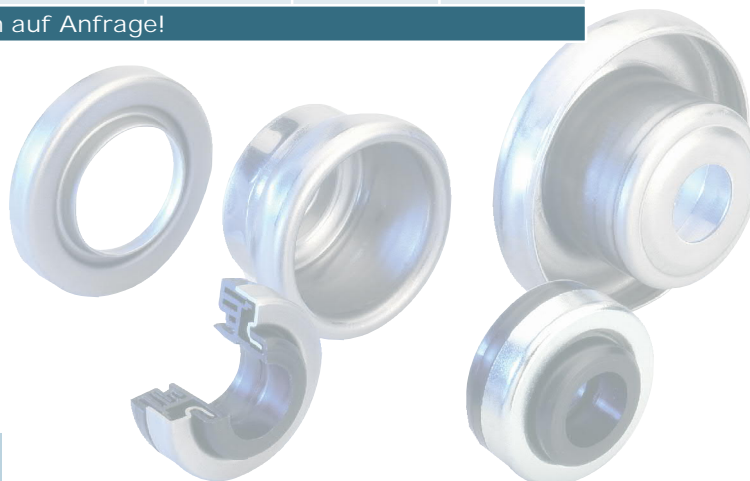


6204:
D47, d20, H14

FL-6204				
Typ	D	H	dL	t
FL-60x3,0/6204	58	34	26	2,0
FL-63,5x2,9/6204	60,2	34,5	26	2,0
FL-70/6204	67,4	36,5	26	2,0
FL-76/6204	73,5	36,5	26	2,0
FL-80/6204	77	36,5	26	2,0
FL-89/6204	86	36,5	26	2,0
FL-89/6204	86	36,5	26	2,5
FL-102/6204	99	36,5	26	2,5
FL-108/6204	104,5	36,5	26	2,5

Weitere Varianten auf Anfrage!

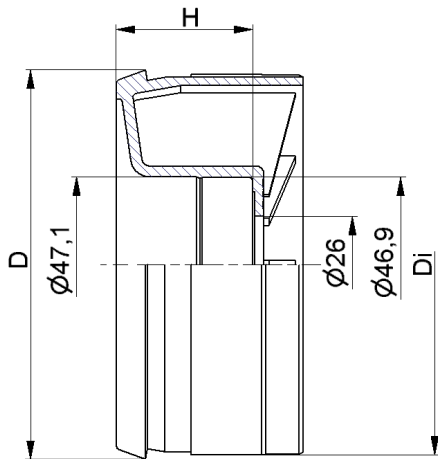
🔩 Lagerhalter: Stahl



Gitterbox [Stck.]

- ø60: 6000
- ø63,5: 5000
- ø70: 4500
- ø76: 4000
- ø80: 3500
- ø89: 3000
- ø102/108 2000

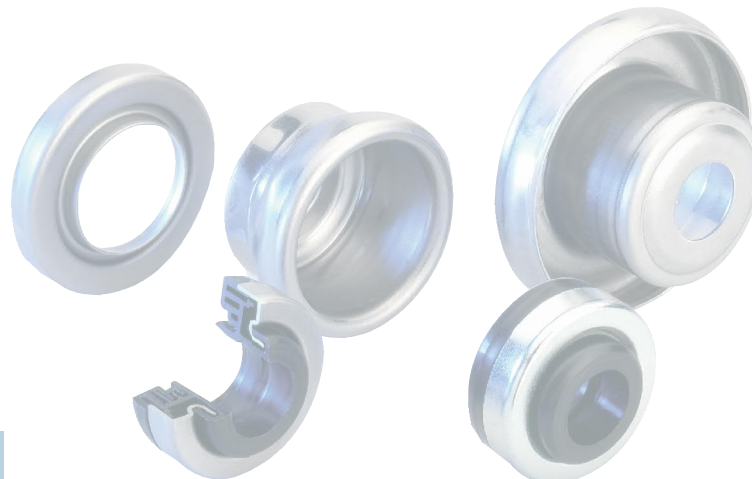
LH/FL



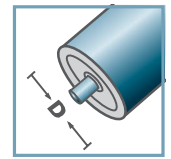
KLH-6204			
Typ	Di	H	D
KLH-89x3,0/6204	83,2	36,5	85,3
KLH-108x3,0/6204	102,2	36,5	104,3

Weitere Varianten auf Anfrage!

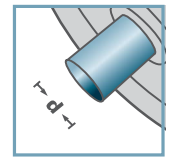
Lagerhalter: Kunststoff



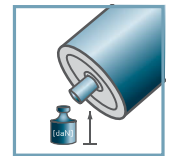
KLH-6204



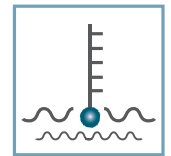
D [mm]
89 - 108



d [mm]
20



C [daN]
-



T [°C]
100°



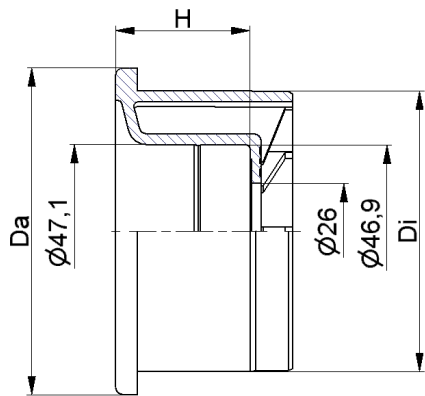
6204:
D47, d20, H14



Gitterbox [Stck.]

1000

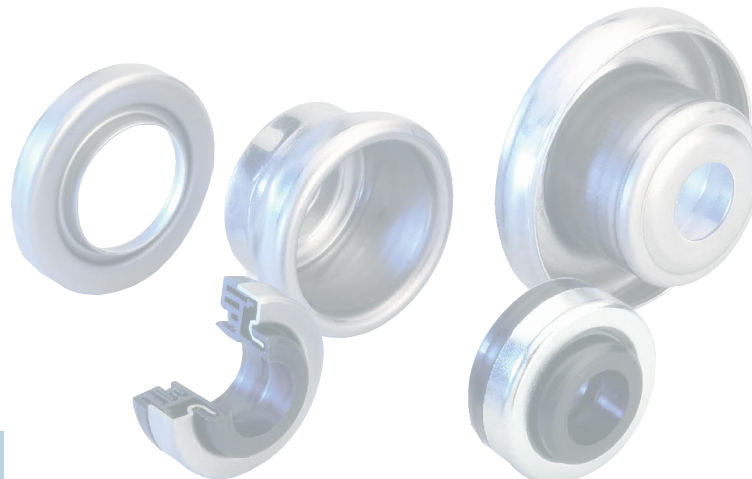
LH/FL



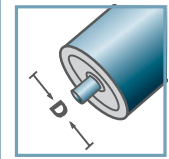
KLH-6204			
Typ	Da	Di	H
KLH-90x7,0/6204	88,8	76,3	36,5

Weitere Varianten auf Anfrage!

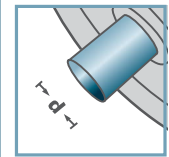
🔩 Lagerhalter: Kunststoff



KLH-6204



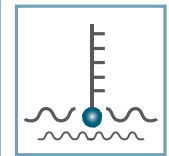
D [mm]
90



d [mm]
20



C [daN]
-



T [°C]
100°



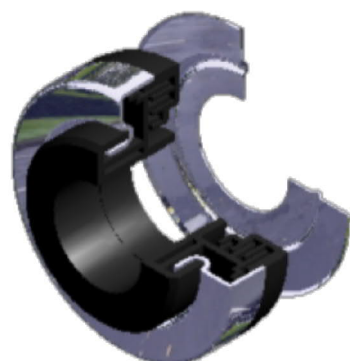
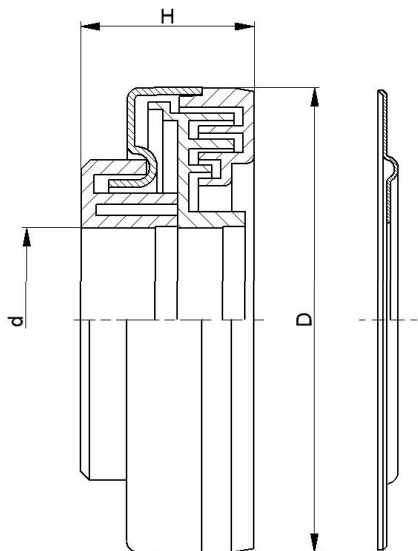
6204:
D47, d20, H14



Gitterbox [Stck.]

1000

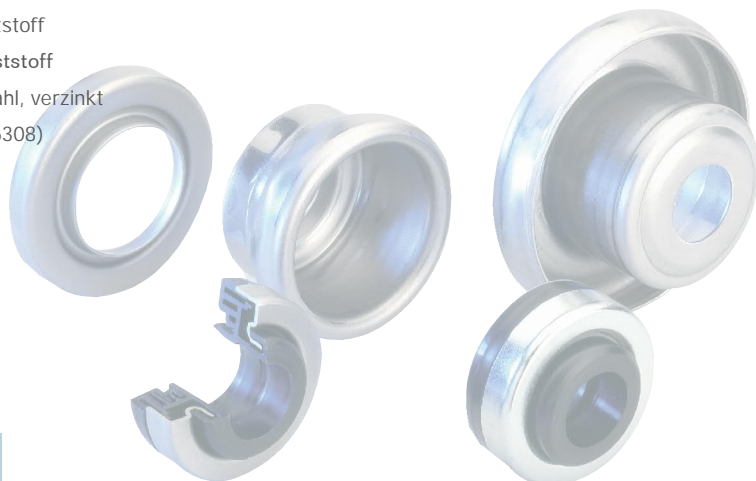
LH/FL



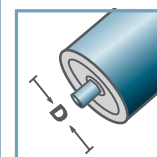
LH-			
Typ	D	H	d
LH-6303	47	22,5	17
LH-6204	47	22,5	20
LH-6305	62	23,5	25
LH-6206	62	23,5	30
LH-6306	72	24,5	30
LH-6308	90	23,1	40

Weitere Varianten auf Anfrage!

- ☛ Dichtkappe: Stahl, verzinkt
- ☛ Regenkappe: Kunststoff
- ☛ Innenlabyrinth: Kunststoff
- ☛ Außenlabyrinth: Kunststoff
- ☛ Fetthaltescheibe: Stahl, verzinkt
(nicht bei 6306 und 6308)

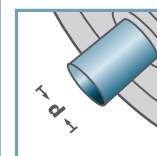


LH-



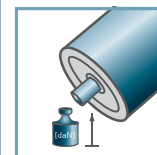
D [mm]

-



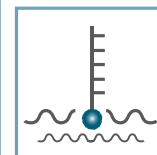
d [mm]

17 - 40



C [daN]

-



T [°C]

0° - 80°



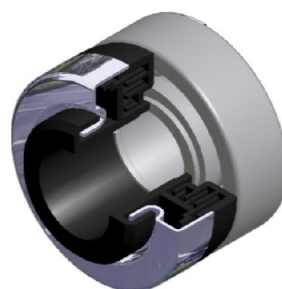
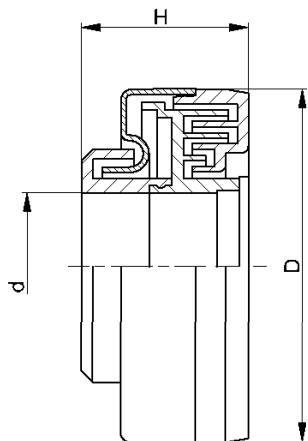
-



Karton [Stck.]

6204: 500
6305: 500

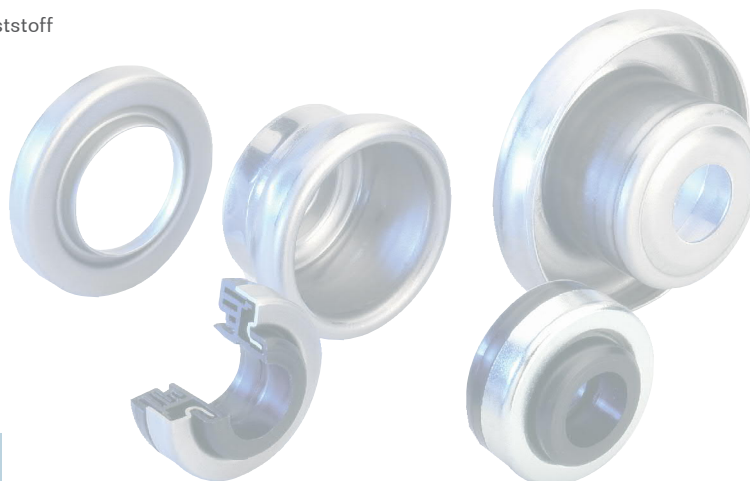
LH/FL



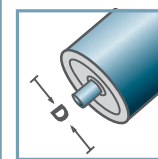
LH- montiert, gefettet			
Typ	D	H	d
LH-6303 M	47	22,5	17
LH-6204 M	47	22,5	20
LH-6204N M	47	20,0	20
LH-6305 M	62	23,5	25
LH-6308 M	90	23,1	40

Weitere Varianten auf Anfrage!

- ☛ Dichtkappe: Stahl, verzinkt
- ☛ Regenkappe: Kunststoff
- ☛ Innenlabyrinth: Kunststoff
- ☛ Außenlabyrinth: Kunststoff
- ☛ Fett: EP2

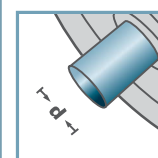


LH-



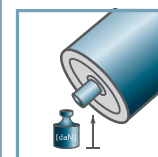
D [mm]

-



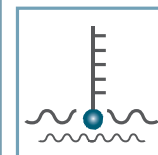
d [mm]

17, 20



C [daN]

-



T [°C]

0° - 80°



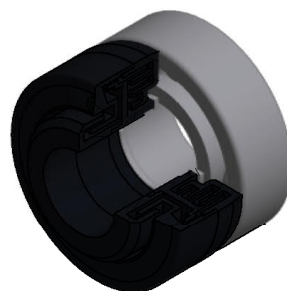
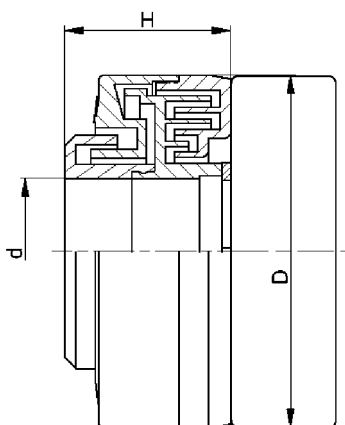
-



Karton [Stck.]



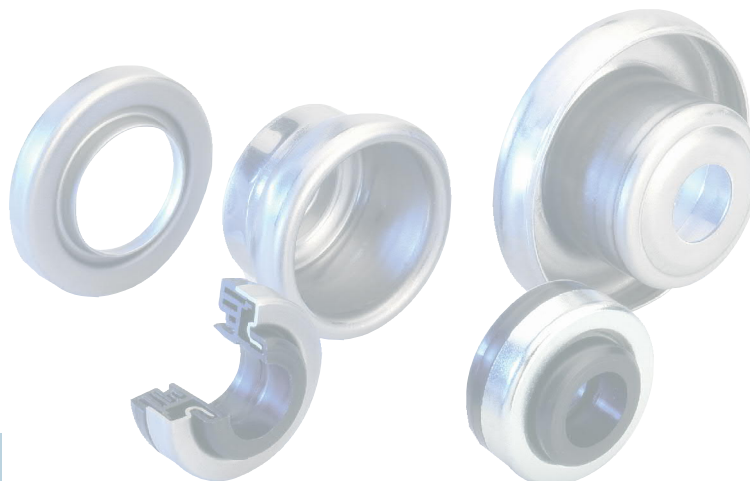
LH/FL



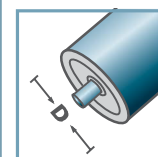
LH-			
Typ	D	H	d
LH-6303 KU	47	22,5	17
LH-6204 KU	47	22,5	20

Weitere Varianten auf Anfrage!

- ☛ Dichtkappe: Kunststoff
- ☛ Regenkappe: Kunststoff
- ☛ Innenlabyrinth: Kunststoff
- ☛ Außenlabyrinth: Kunststoff

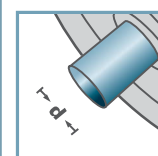


LH-



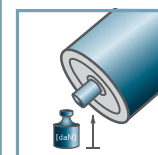
D [mm]

-



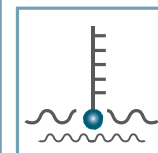
d [mm]

20



C [daN]

-



T [°C]

0° - 80°



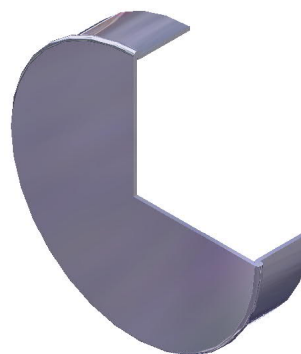
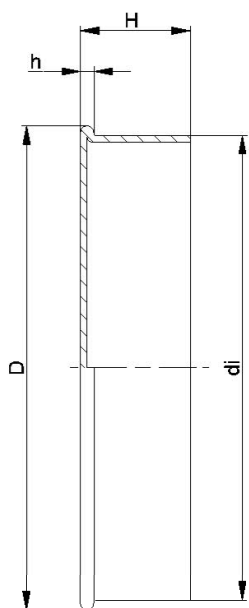
-



Karton [Stck.]



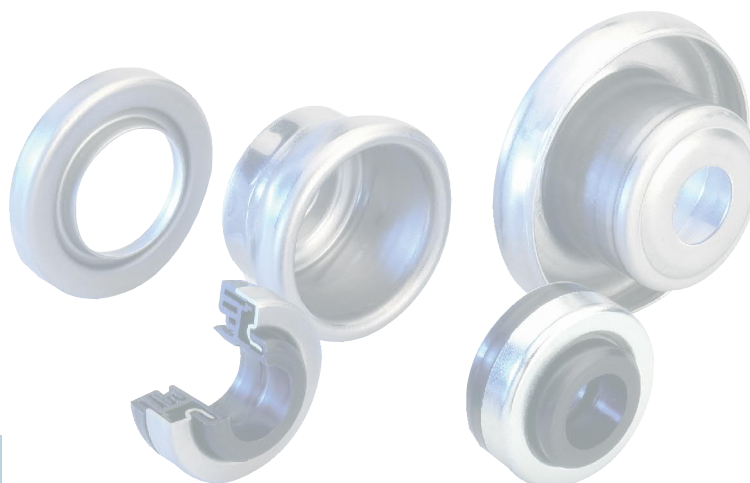
LH/FL



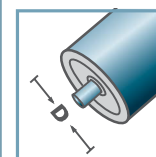
LH- geschlossen				
Typ	D	di	H	h
LH-6204	50	47,4	14,7	1,8

Weitere Varianten auf Anfrage!

🔩 Dichtkappe: Stahl

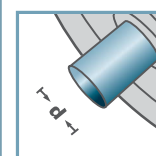


LH-



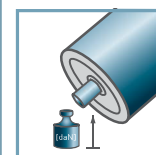
D [mm]

-



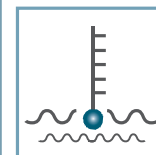
d [mm]

-



C [daN]

-



T [°C]

-



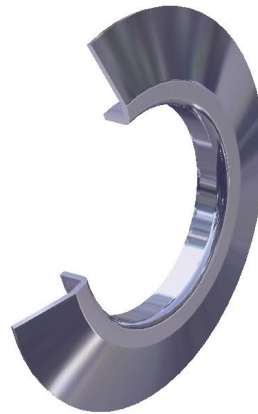
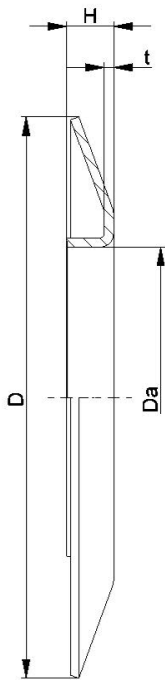
-



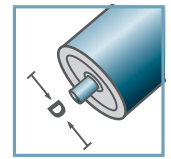
Karton [Stck.]

ST-6204	125
ST-6305	100
ST-6306	100

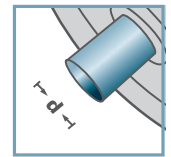
LH/FL



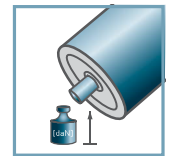
BS-



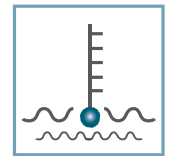
D [mm]
-



d [mm]
-



C [daN]
-



T [°C]
-



-

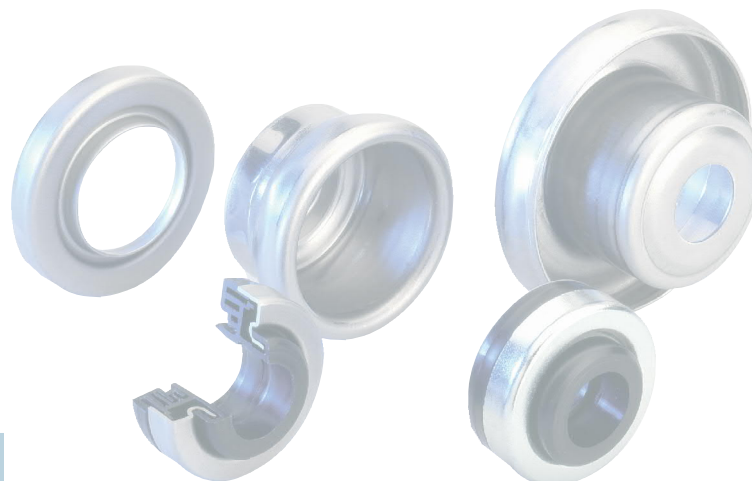


Karton [Stck.]

BS-				
Typ	Da ±0.1	D -2	H ±0.5	t
BS-50-130	49,9	130	10	1,5
BS-60-130	59,9	130	10	1,5
BS-80-150	79,9	150	14	2,5
BS-89-150	88,9	150	14	2,5
BS-108-150	107,9	150	14	2,5

Weitere Varianten auf Anfrage!

☛ Bordscheibe: Stahl



LH/FL