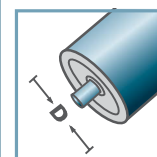


VR-		
Typ	Di	Da
50x1,5.40	47,3	49,5

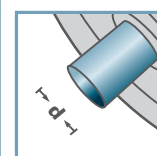
Radkörper: Kunststoff



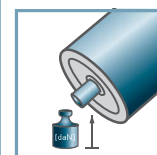
VR-40



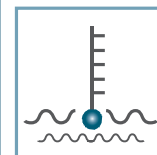
D [mm]
50



d [mm]
-



C [daN]
-



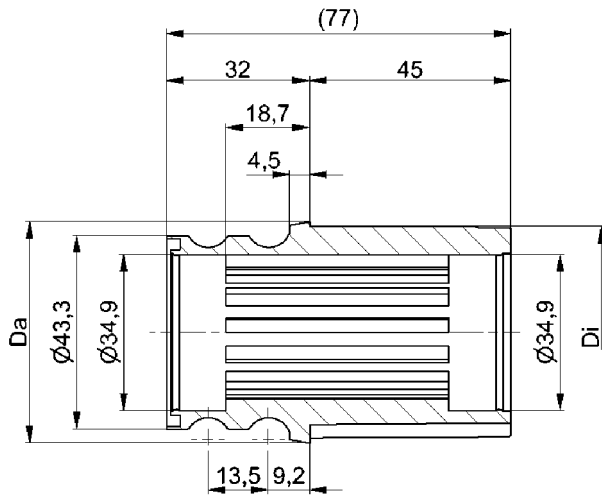
T [°C]
0° - 80°



Karton [Stck.]

100

Kunststoffriemenrad

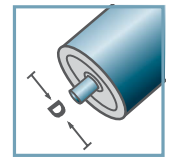


RR-		
Typ	Di	Da
50x1,5.40	47,3	49,5

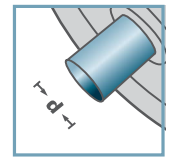
Radkörper: Kunststoff



RR-40



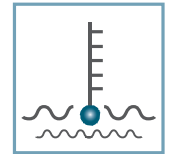
D [mm]
50



d [mm]
-



C [daN]
-



T [°C]
0° - 80°



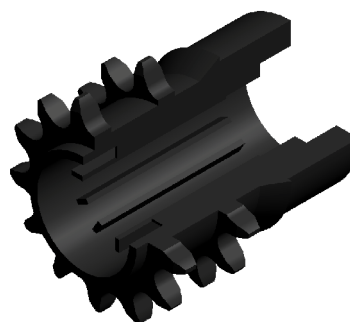
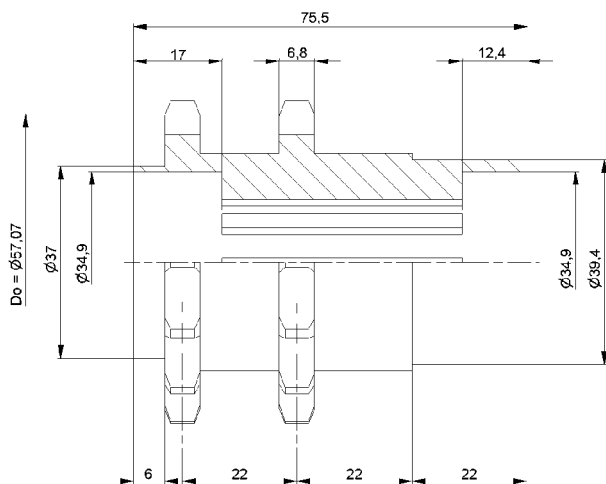
-



Karton [Stck.]

100

Kunststoffriemenrad



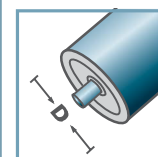
KKR-1/2"x5/16"-Z14

Weitere Varianten auf Anfrage!

Radkörper: Kunststoff

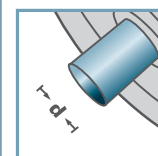


KKR-40



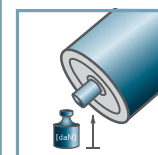
D [mm]

-



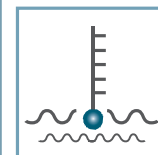
d [mm]

-



C [daN]

-



T [°C]

0° - 80°



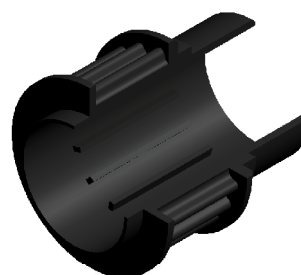
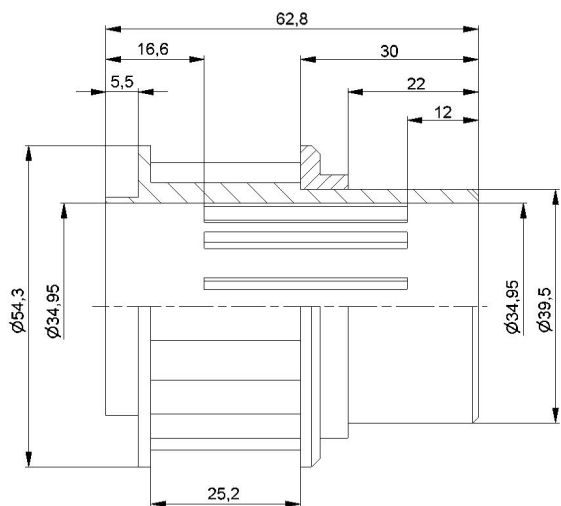
-



Karton [Stck.]

500

Kunststoffkettenrad



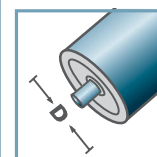
KZA-Z20.40

Weitere Varianten auf Anfrage!

Radkörper: Kunststoff

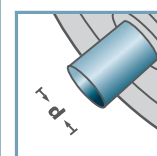


KZA-40



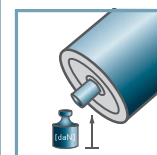
D [mm]

-



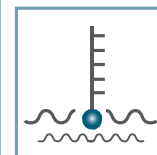
d [mm]

-



C [daN]

-



T [°C]

0° - 80°



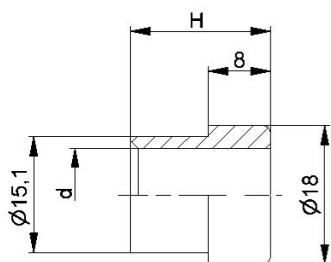
-



Karton [Stck.]

140

Kunststoffzahnriemenrad



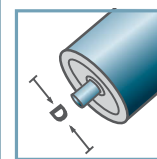
KKR-40		
Typ	d	H
KKR-40	10	19
KKR-40	12	18
KKR-40	14	19
KKR-40	SW11	19

Weitere Varianten auf Anfrage!

Reduzierbuchse: Kunststoff

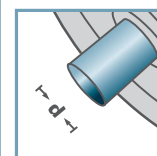


KKR-40



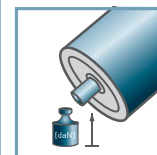
D [mm]

-



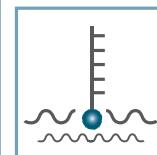
d [mm]

10; 12; 14; SW11



C [daN]

-



T [°C]

0° - 80°



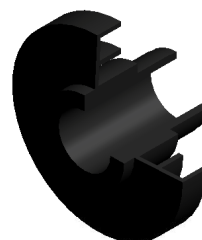
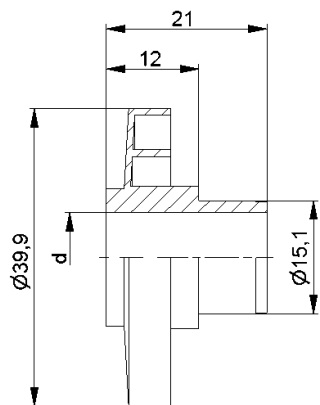
-



Karton [Stck.]

500/8000

Zubehör Kettenräder



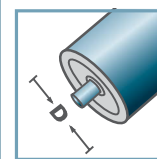
KKR-40	
Typ	d
KKR-40	10
KKR-40	12
KKR-40	14
KKR-40	SW11

Weitere Varianten auf Anfrage!

☛ Labyrinth: Kunststoff

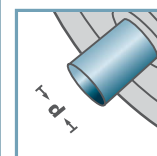


KKR-40



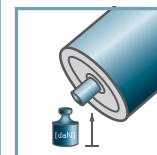
D [mm]

-



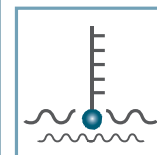
d [mm]

10; 12; 14; SW11



C [daN]

-



T [°C]

0° - 80°



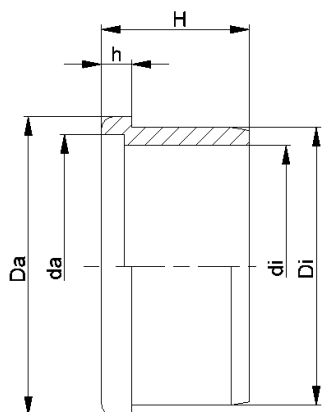
-



Karton [Stck.]

200/1000

Zubehör Kettenräder



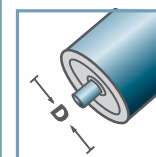
KKR-40						
Typ	Di	Da	di	da	H	h
50x1,5	47,25	50	39,3	42,6	25,2	5
50x2,8	44,7	50	39,3	42,6	25,2	5
60x1,5	57,3	60	47,0	50,7	25,5	5
60x2,0	56,3	60	47,0	50,7	25,5	5

Weitere Varianten auf Anfrage!

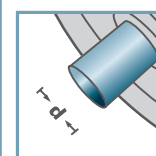
☛ Distanzring fest: Kunststoff



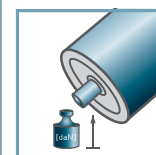
KKR-40



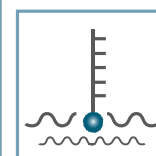
D [mm]
50 - 60



d [mm]
-



C [daN]
-



T [°C]
0° - 80°



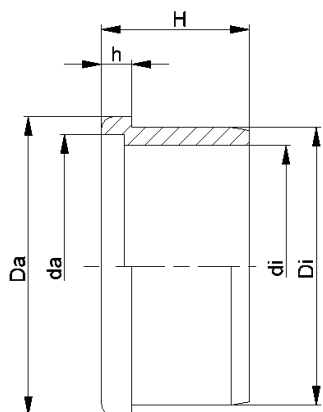
-



Karton [Stck.]

ø50: 400
ø60: 250

Zubehör Kettenräder



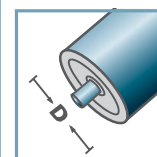
KKR-40						
Typ	Di	Da	di	da	H	h
50x1,5	47,2	50	40,6	44,6	25	5

Weitere Varianten auf Anfrage!

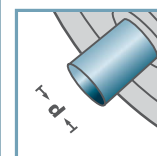
Distanzring für Staubetrieb: Kunststoff



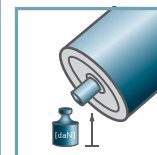
KKR-40



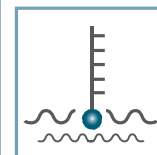
D [mm]
50 - 60



d [mm]
-



C [daN]
-



T [°C]
0° - 80°



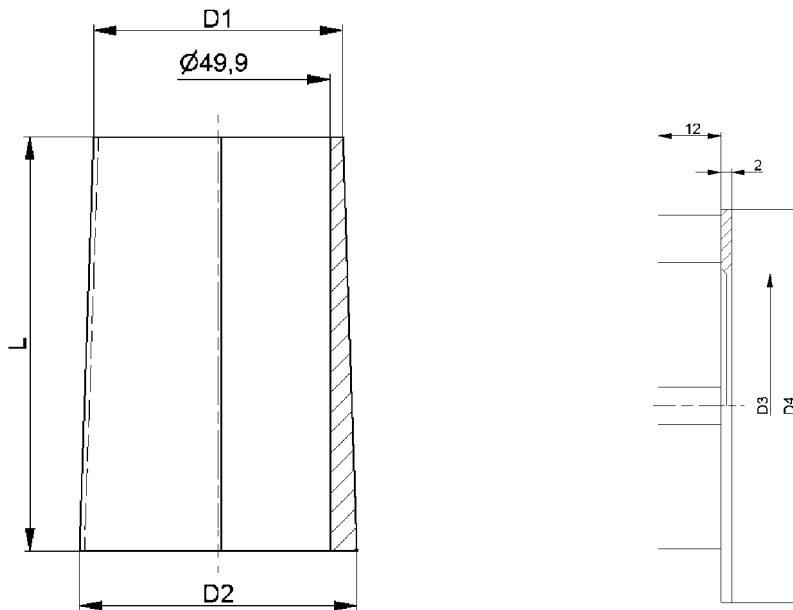
-



Karton [Stck.]

400

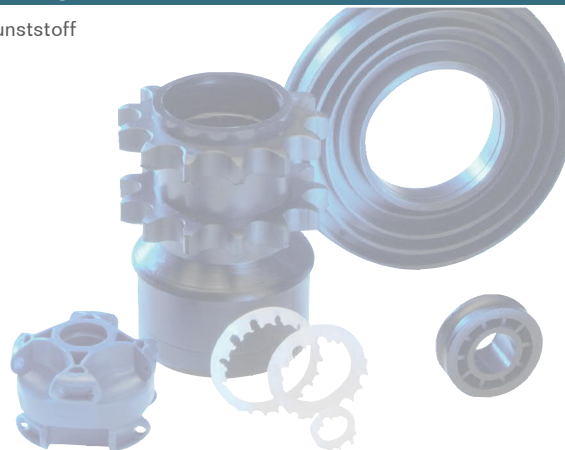
Zubehör Kettenräder



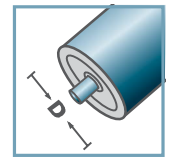
KF-50					
Typ A	D1	D2	L	D3	D4
KF-50 I-a Type A	53,4	59,7	92,5	-	-
KF-50 I-b Type A	54,0	59,7	95,5	-	-
KF-50 II Type A	60,0	66,5	100,0	-	-
KF-50 III Type A	66,5	73,0	99,0	-	-
KF-50 IV Type A	73,5	80,0	100,0	50,6	75,5
KF-50 V Type A	80,0	86,5	99,5	50,7	81,7
KF-50 VI Type A	86,5	93,5	100,0	50,6	87,7
KF-50 VII Type A	93,5	100,0	100,0	50,6	94,3
KF-50 VIII Type A	100,0	106,5	95,5	-	-
KF-50 IX Type A	106,5	113,0	95,5	-	-
KF-50 X Type A	113,0	119,5	95,5	-	-

Weitere Varianten auf Anfrage!

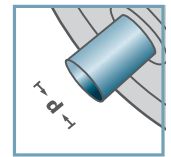
- ☛ Konische Fördererlemente: Kunststoff
- ☛ Enddeckel: Kunststoff



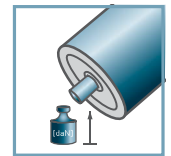
KF-50



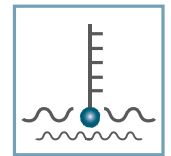
D [mm]
50



d [mm]
-



C [daN]
-



T [°C]
0° - 80°



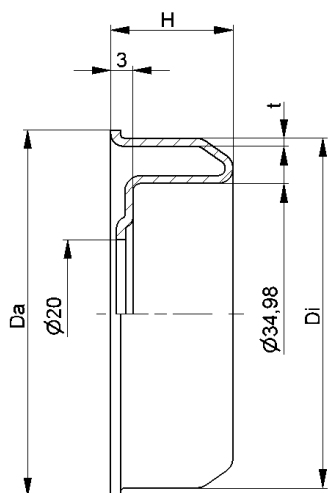
-



Karton [Stck.]



Konische Elemente



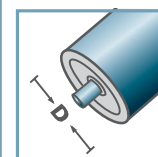
MRK-40				
Typ	Di ±0,1	Da	H	t
MRK-50x1,5.40	47,3	49,5	16	1,2
MRK-50x2,0.40	46,3	49,5	16	1,2
MRK-60x2,0.40	56,3	59,5	16,5	1,5
MRK-60x3,0.40	54,3	59,5	16,5	1,5

Weitere Varianten auf Anfrage!

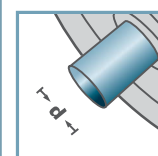
Radkörper: Stahl, verzinkt



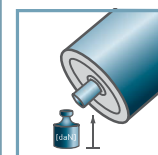
MRK-40



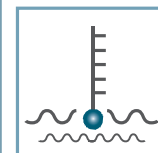
D [mm]
50 - 60



d [mm]
15



C [daN]
-



T [°C]
-

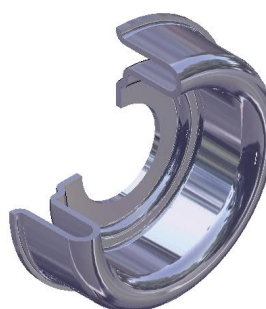
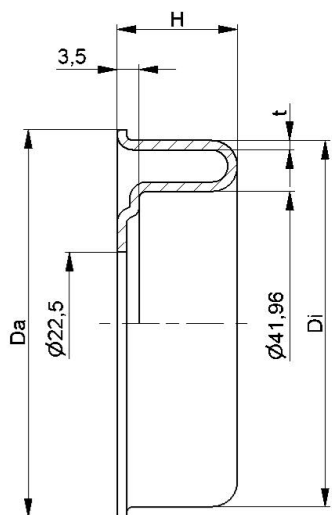


6202:
D35; d15; H11



Karton [Stck.]

Metallradkörper



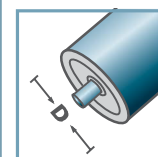
MRK-6004				
Typ	Di ±0,1	Da	H	t
MRK-63,5x2,9/6004	58,1	61,5	19,0	1,5

Weitere Varianten auf Anfrage!

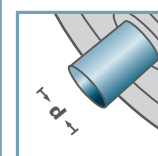
Radkörper: Stahl, verzinkt



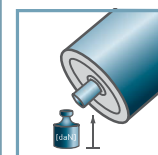
MRK-6004



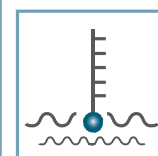
D [mm]
63,5



d [mm]
20



C [daN]
-



T [°C]
-

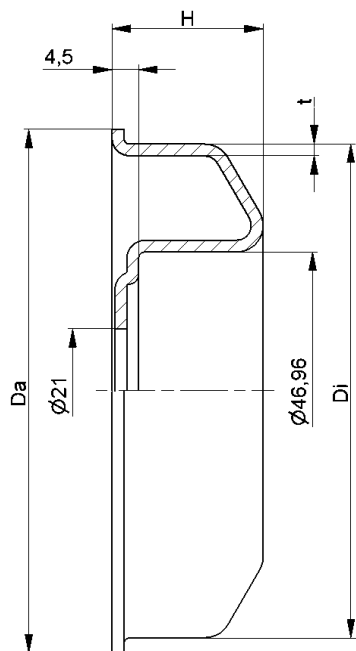


6004:
D42; d20; H12



Karton [Stck.]

Metallradkörper



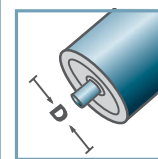
MRK-6204				
Typ	Di ±0,1	Da	H	t
MRK-80x2,0/6204	76,5	79,5	23,5	2,0
MRK-80x3,0/6204	74,5	79,5	23,5	2,0
MRK-89x3,0/6204	83,5	88,5	23,5	2,0
MRK-89x3,25/6204	83,0	88,5	23,5	2,0
MRK-108x3,25/6204	102,0	107,5	25,0	2,0

Weitere Varianten auf Anfrage!

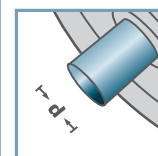
Radkörper: Stahl, verzinkt



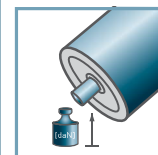
MRK-6204



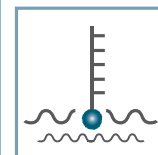
D [mm]
80 - 108



d [mm]
20



C [daN]
-



T [°C]
-

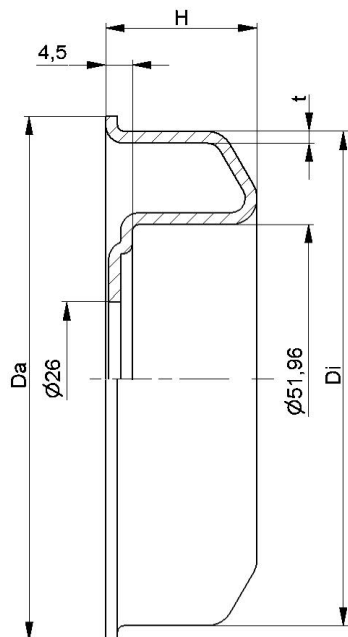


6204:
D47; d20; H14



Karton [Stck.]

Metallradkörper



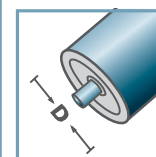
MRK-6205				
Typ	Di ±0,1	Da	H	t
MRK-80x3,0/6205	74,5	79,5	23,5	2,0
MRK-89x3,0/6205	83,5	88,5	24,5	2,0
MRK-108x3,25/6205	102,0	107,5	25,5	2,0

Weitere Varianten auf Anfrage!

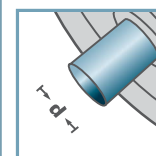
Radkörper: Stahl, verzinkt



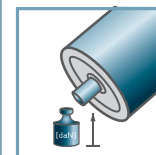
MRK-6205



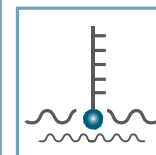
D [mm]
80 - 108



d [mm]
25



C [daN]
-



T [°C]
-



6205:
D52; d25; H15



Karton [Stck.]

Metallradkörper