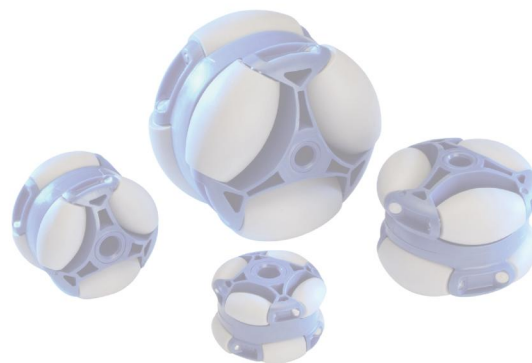
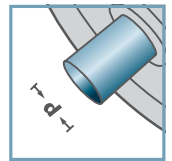


ASR-			
Type	D	B	Load Rating C [daN]
ASR-80	80	64	40
Other dimensions on request!			

- ☛ Housing: Plastic
- ☛ Barrel-shaped Roller: Plastic
- ☛ Axis: 1.4301



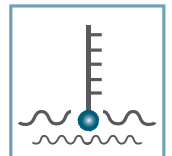
ASR-



d [mm]  
8; 12; 15; SW14



C [daN]  
40



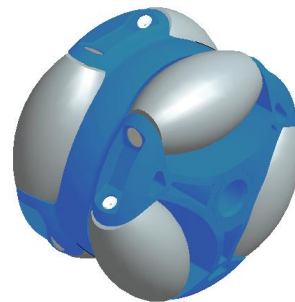
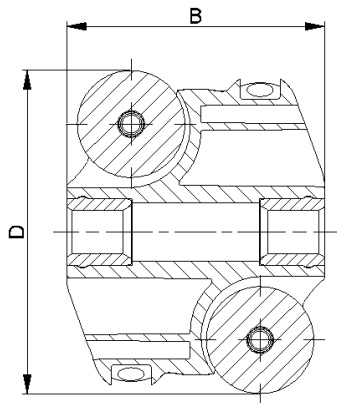
T [°C]  
0° - 80°



Carton [pcs.]

50

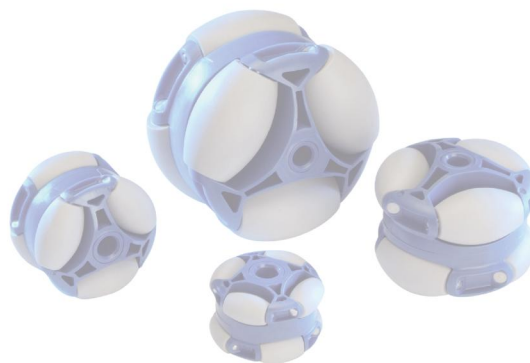
# Polydirectional Wheel



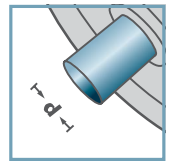
ASR-			
Type	D	B	Load Rating C [daN]
ASR-60	60	48	20
ASR-48	48	39	15
ASR-40	40	29	10

Other dimensions on request!

- ☛ Housing: Plastic
- ☛ Barrel-shaped Roller: Plastic
- ☛ Axis: 1.4301



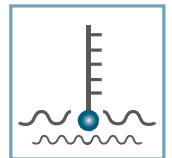
ASR-



d [mm]  
8; 10; SW9



C [daN]  
10 - 20



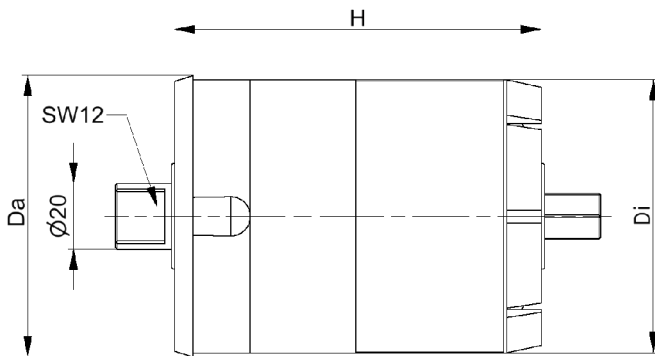
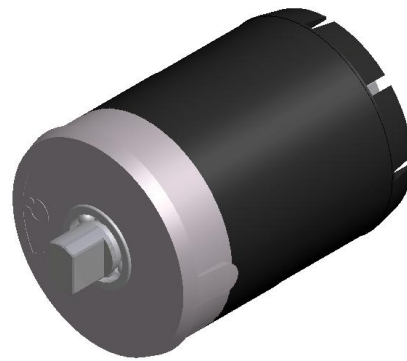
T [°C]  
0° - 80°



Carton [pcs.]

50

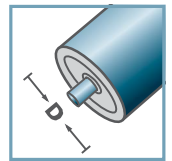
# Polydirectional Wheel



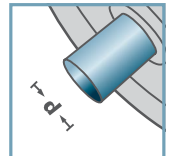
BR-89x3,0-				
Type	Da	Di	H	Load Rating [kg]
200	88,5	83	115	200
500	88,5	83	115	500
800	88,5	83	115	800
1200	88,5	83	115	1200



BR-



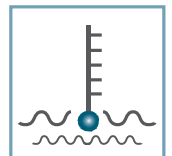
D [mm]  
89



d [mm]  
20



C [daN]  
250



T [°C]  
0° - 80°



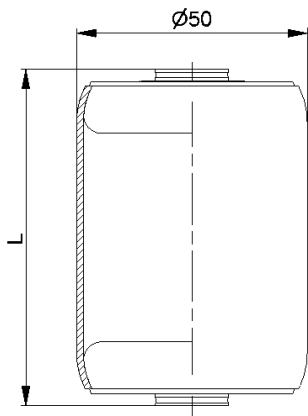
EP2



Carton [pcs.]

20

# Brake Roller Unit



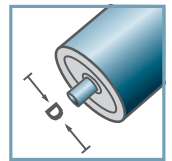
AMR-50x1,5.20		
Type	L	Load Rating C [daN]
AMR-50x1,5.20-66	66	160
AMR-50x1,5.20-73	73	160
AMR-50x1,5.20-80	80	160
AMR-50x1,5.20-100	100	160

Other dimensions on request!

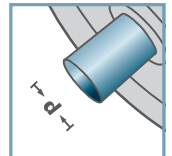
- ☛ Tube: Steel, Zinc plated
- ☛ Metal Roller Bearing MTR-20



AMR-50.20



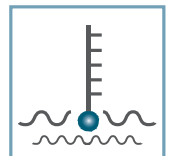
D [mm]  
50



d [mm]  
8; 10; 12; SW11



C [daN]  
160



T [°C]  
0° - 100°

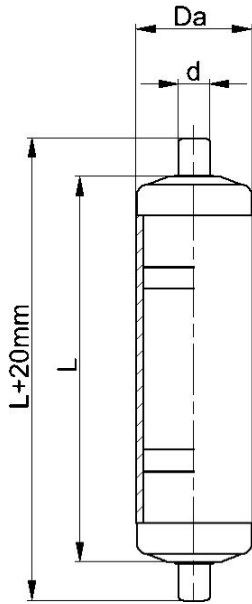


Oil

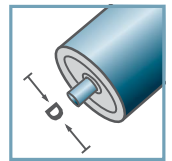


Carton [pcs.]

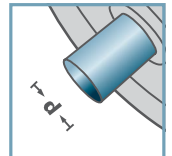
# Metal Roller



AKR-00/01



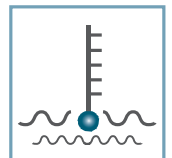
D [mm]  
20; 30; 40



d [mm]  
6; 8



C [daN]  
10; 15



T [°C]  
0° - 80°



AKR-00/01				
Type	D	d	L max.	Load Rating C [daN]
AKR-20x1,5.00.L	20	6	300	10
AKR-30x1,8.00.L	30	8	400	15
AKR-40x2,3.00.L	40	8	400	15
Other dimensions on request!				

- Tube: Plastic
- Plastic Roller Bearing KTR-00/01 with spring axis



Carton [pcs.]

# Plastic Rollers with Spring Axis