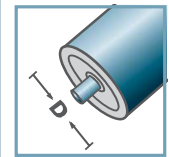
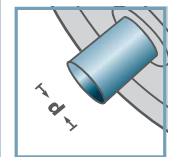


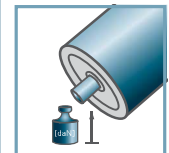
LH-6305



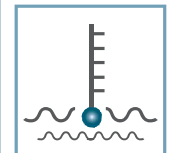
D [mm]
89 - 159



d [mm]
25



C [daN]
-



T [°C]
-



6305:
D62, d25, H17

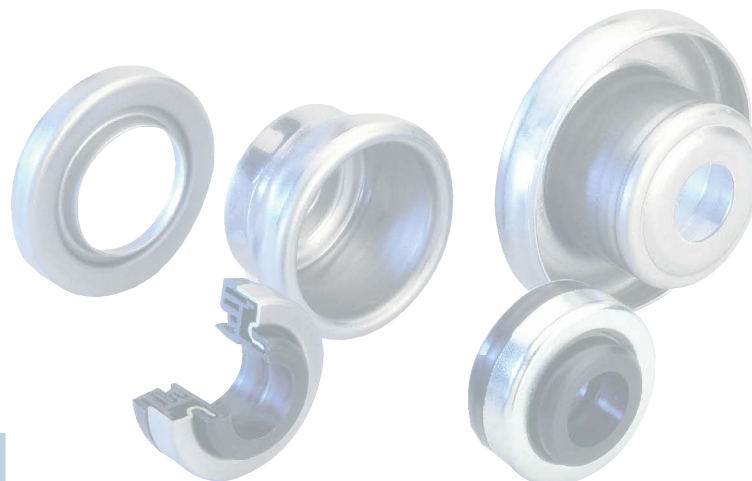


Skeleton
Container [pcs.]
ø89: 2600
ø108: 1900
ø133: 1150

LH-6305				
Type	Di	H	dL	t
LH-89x3,0/6305	83,5	40,5	36,5	2,0
LH-108x2,5/6305	103,3	40,5	36,5	2,0
LH-108x3,25/6305	102,1	40,5	36,5	2,0
LH-127x2,9/6305	121,7	40,5	36,5	2,5
LH-133x3,6/6305	126,3	40,5	36,5	2,5
LH-159x4,5/6305	150,5	40,5	36,5	2,5

Other dimensions on request!

Retainer for Standard Bearings: Steel



LH/FL